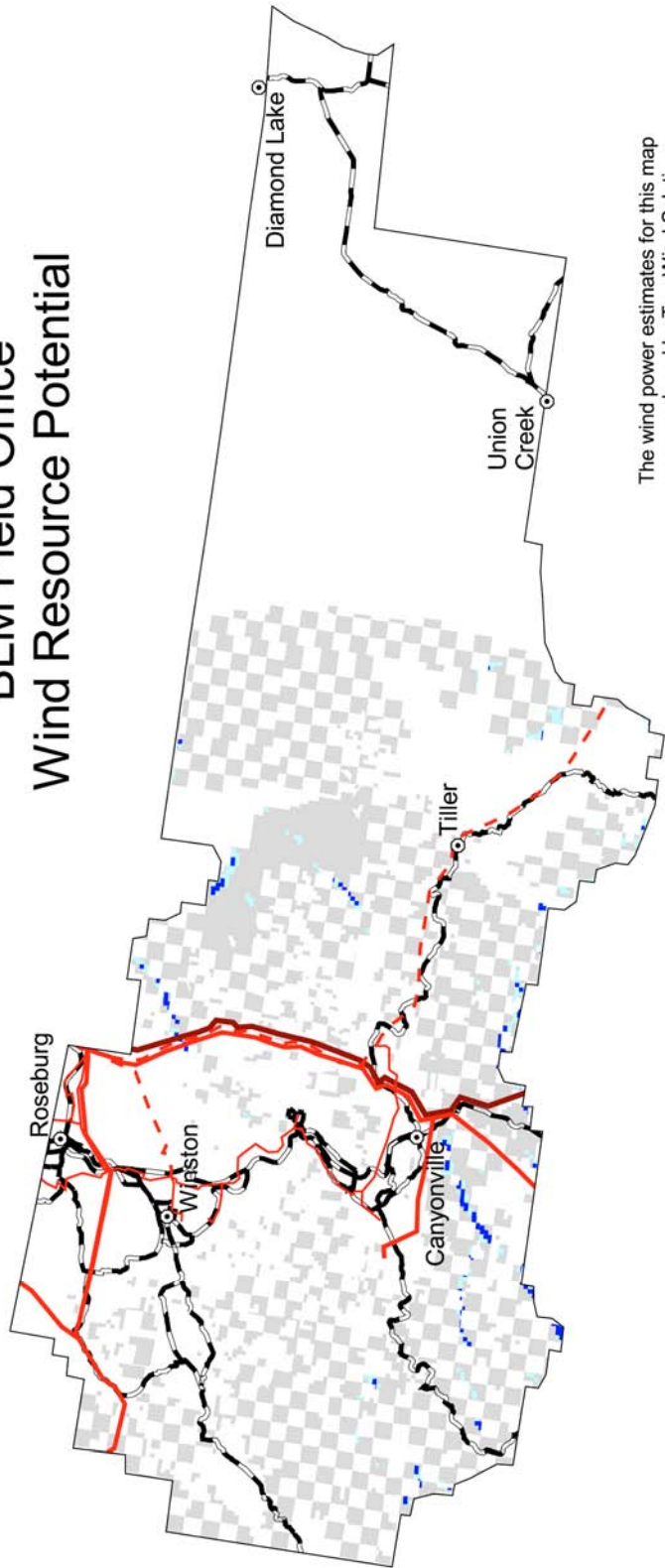


# South River, Oregon BLM Field Office Wind Resource Potential



The wind power estimates for this map were produced by TrueWind Solutions using the Mesomap system and historical weather data. It has been validated with available surface data by NREL and wind energy meteorological consultants.

**Transmission Line\***  
Voltage

- 69 \*\*
- 100 - 161
- 230 - 287
- 345 - 500
- 1000

\*Source: POWERmap© 2002 Platts, a Division of the McGraw-Hill Companies.  
\*\* Data for lines < 100 kV is not available in many areas.

- City or Town
- Paved Road
- Non-BLM Lands
- Excluded Area (wilderness area, wilderness study area, national monument, or national conservation area)

**Wind Resource Level**

- High
- Medium
- Low

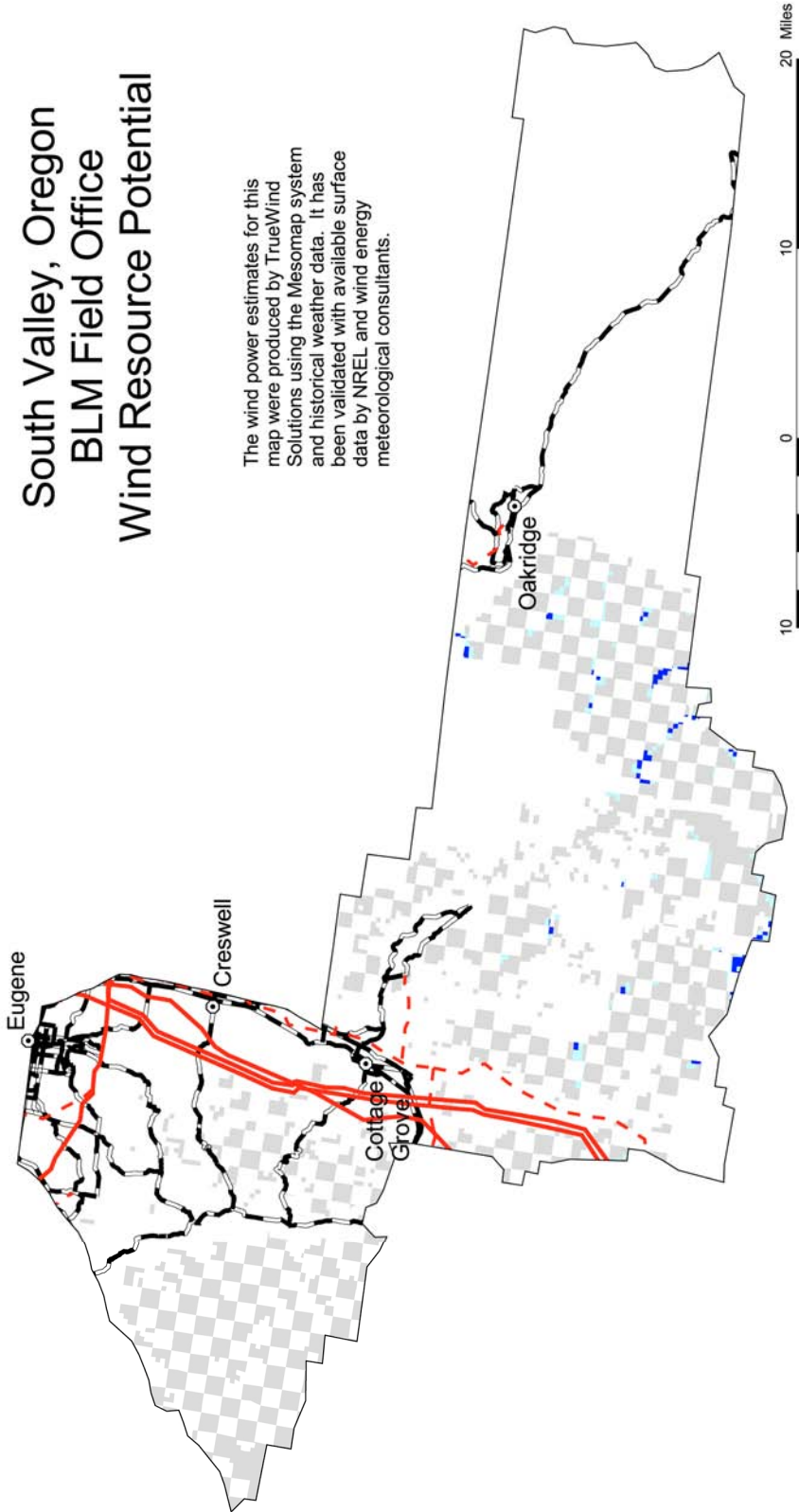
U.S. Department of the Interior Bureau of Land Management

U.S. Department of Energy National Renewable Energy Laboratory

12-MAY-2004 11.1.0

# South Valley, Oregon BLM Field Office Wind Resource Potential

The wind power estimates for this map were produced by TrueWind Solutions using the Mesomap system and historical weather data. It has been validated with available surface data by NREL and wind energy meteorological consultants.



U.S. Department of the Interior  
Bureau of Land Management



U.S. Department of Energy  
National Renewable Energy Laboratory



12-MAY-2004 11.1.7

**Transmission Line\***  
Voltage

- 69 \*\*
- 100 - 161
- 230 - 287
- 345 - 500
- 1000

\*Source: POWERmap© 2002 Platts, a Division of the McGraw-Hill Companies.  
\*\* Data for lines < 100 kV is not available in many areas.

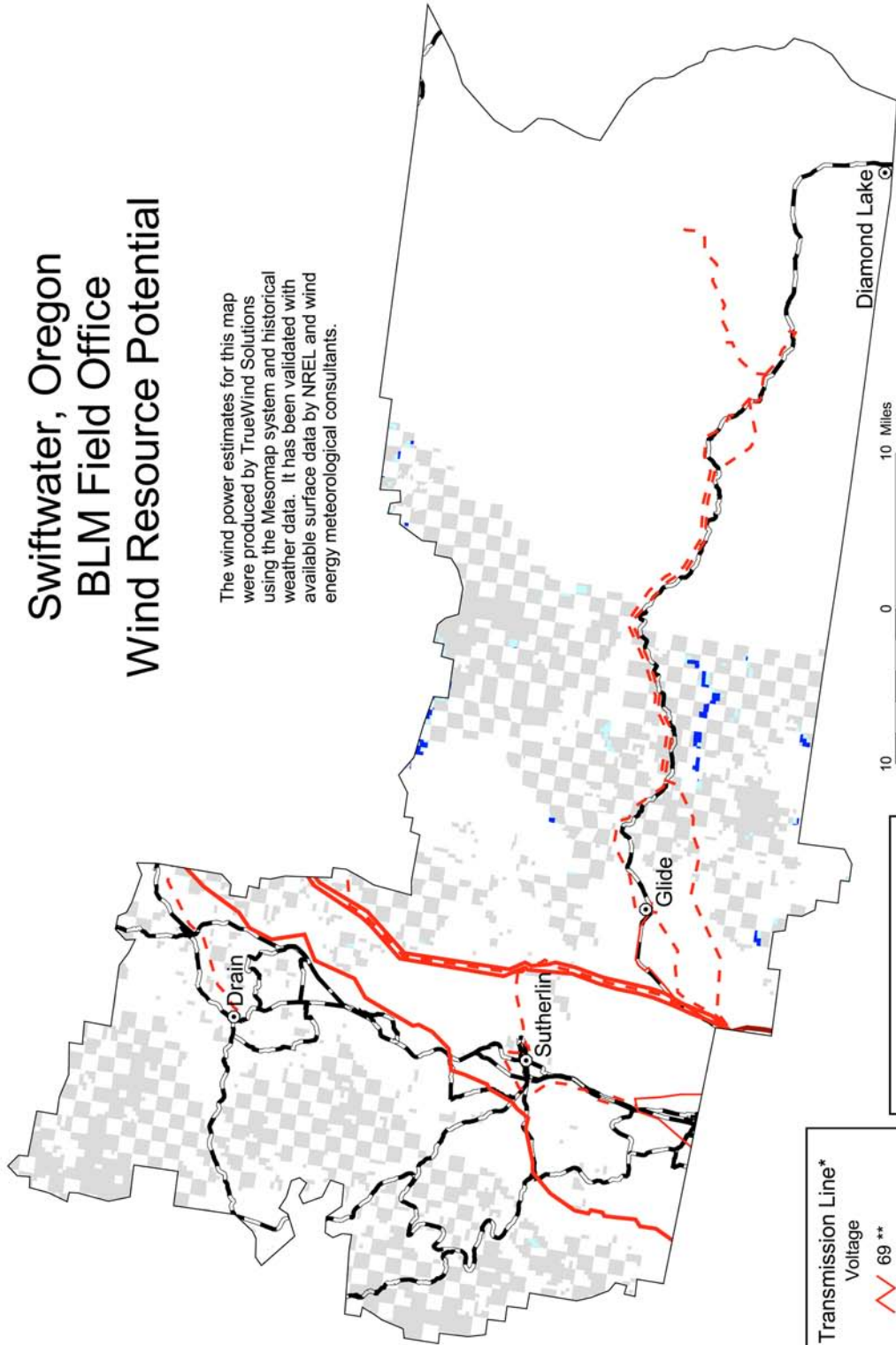
- City or Town
- Paved Road
- Non-BLM Lands
- Excluded Area  
(wilderness area, wilderness study area, national monument, or national conservation area)

**Wind Resource Level**

- High
- Medium
- Low

# Swiftwater, Oregon BLM Field Office Wind Resource Potential

The wind power estimates for this map were produced by TrueWind Solutions using the Mesomap system and historical weather data. It has been validated with available surface data by NREL and wind energy meteorological consultants.



**Transmission Line\***  
Voltage

- 69 \*\*
- 100 - 161
- 230 - 287
- 345 - 500
- 1000

\*Source: POWERmapQ 2002 Platts, a Division of the McGraw-Hill Companies.  
\*\* Data for lines < 100 kV is not available in many areas.


- City or Town
- Paved Road
- Non-BLM Lands
- Excluded Area (wilderness area, wilderness study area, national monument, or national conservation area)

**Wind Resource Level**


- High
- Medium
- Low



U.S. Department of the Interior  
Bureau of Land Management



U.S. Department of Energy  
National Renewable Energy Laboratory



12-MAY-2004 11.1.8

# Three Rivers, Oregon BLM Field Office Wind Resource Potential

The wind power estimates for this map were produced by TrueWind Solutions using the Mesomap system and historical weather data. It has been validated with available surface data by NREL and wind energy meteorological consultants.

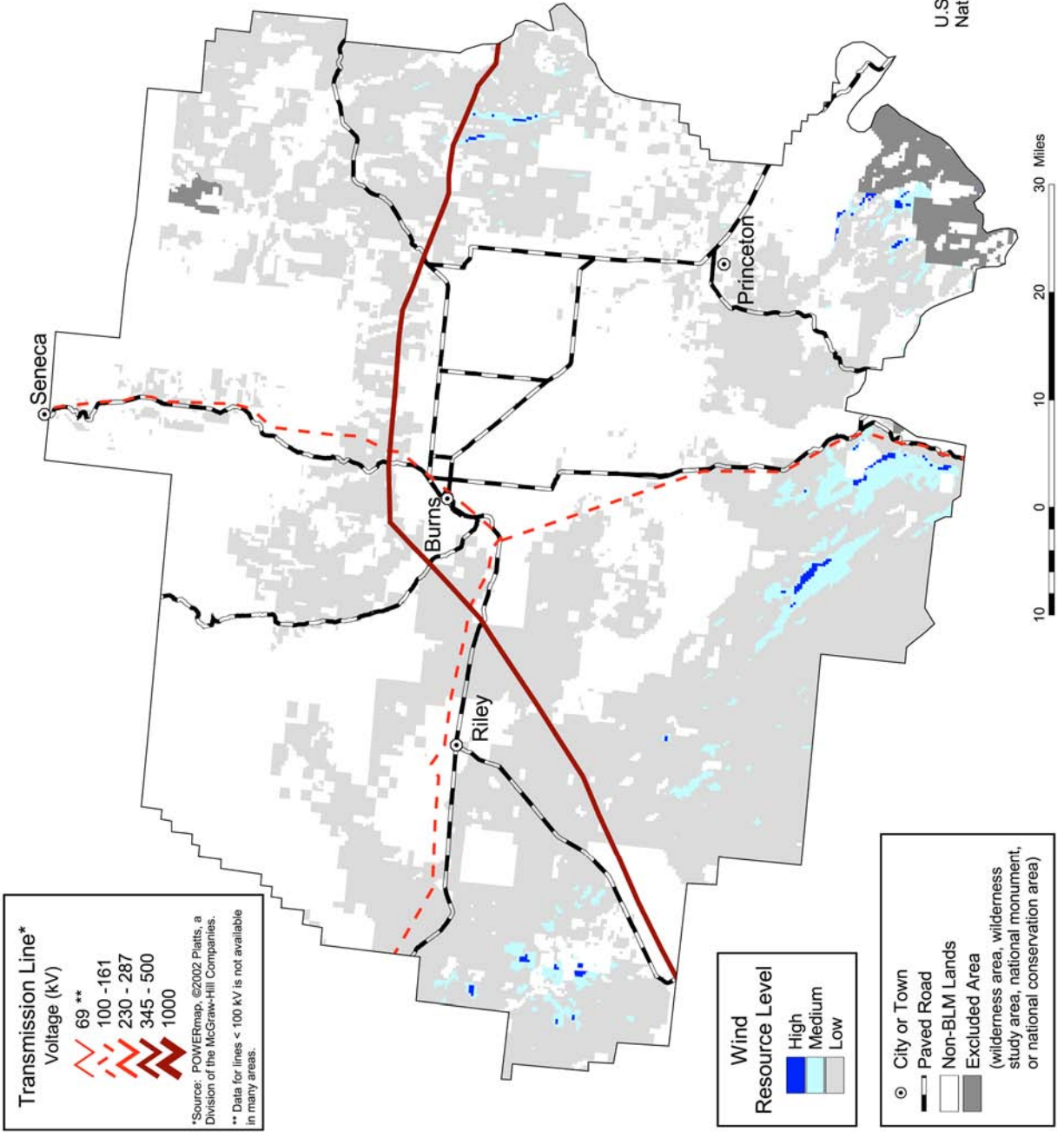
U.S. Department of the Interior  
Bureau of Land Management



U.S. Department of Energy  
National Renewable Energy Laboratory



12-MAY-2004 11.1.19



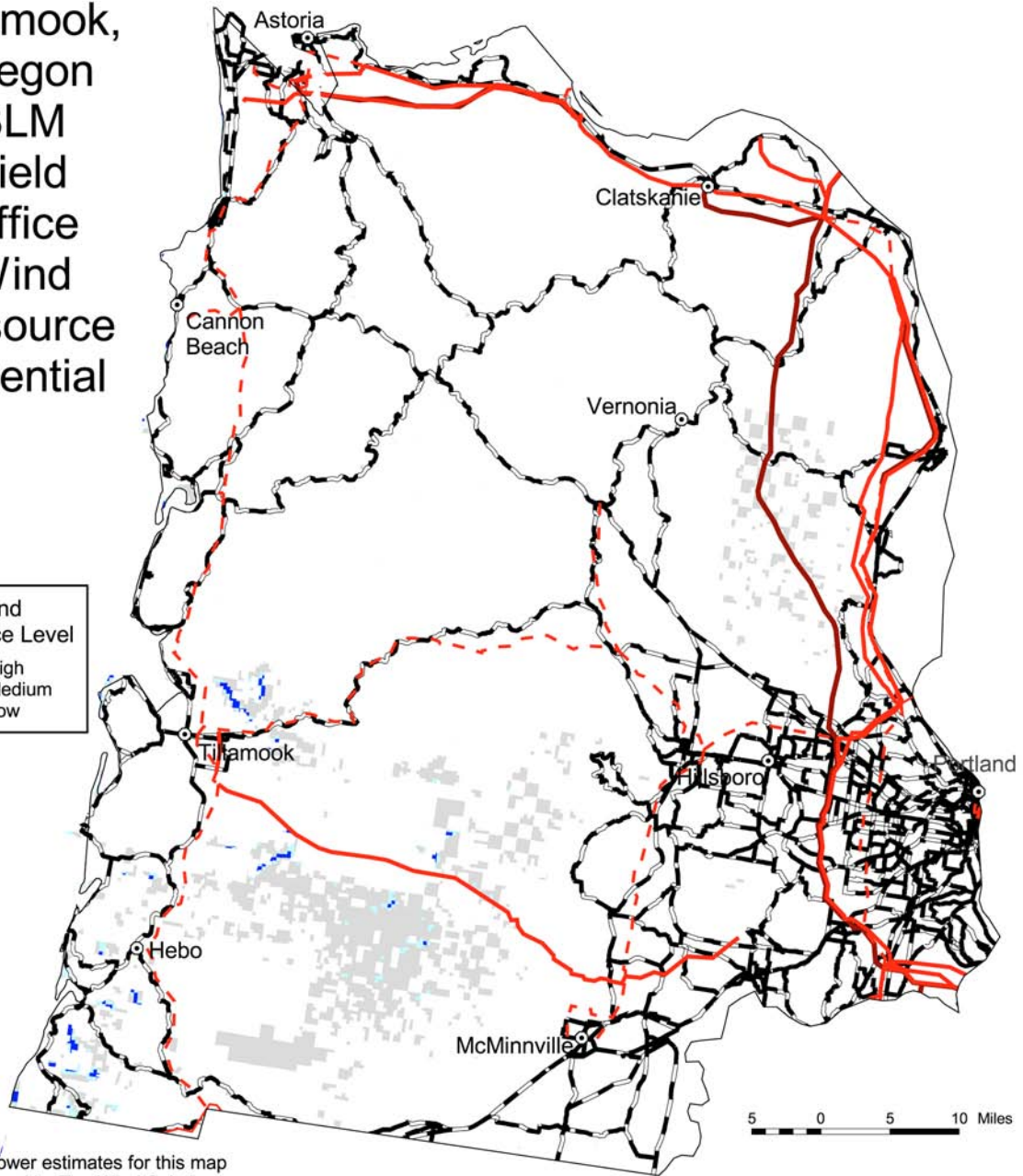
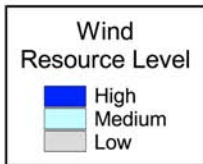
**Transmission Line\***  
Voltage (kV)  
69 \*\*  
100 - 161  
230 - 287  
345 - 500  
1000

\*Source: POWERmap, ©2002 Platts, a Division of the McGraw-Hill Companies.  
\*\* Data for lines < 100 kV is not available in many areas.

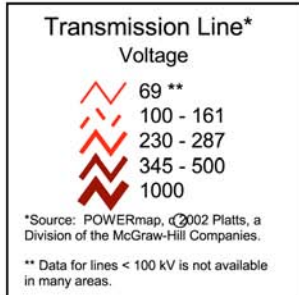
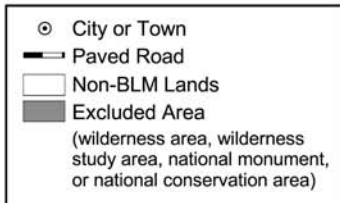
**Wind Resource Level**  
High  
Medium  
Low

City or Town  
Paved Road  
Non-BLM Lands  
Excluded Area  
(wilderness area, wilderness study area, national monument, or national conservation area)

# Tillamook, Oregon BLM Field Office Wind Resource Potential



The wind power estimates for this map were produced by TrueWind Solutions using the Mesomap system and historical weather data. It has been validated with available surface data by NREL and wind energy meteorological consultants.



U.S. Department of the Interior  
Bureau of Land Management



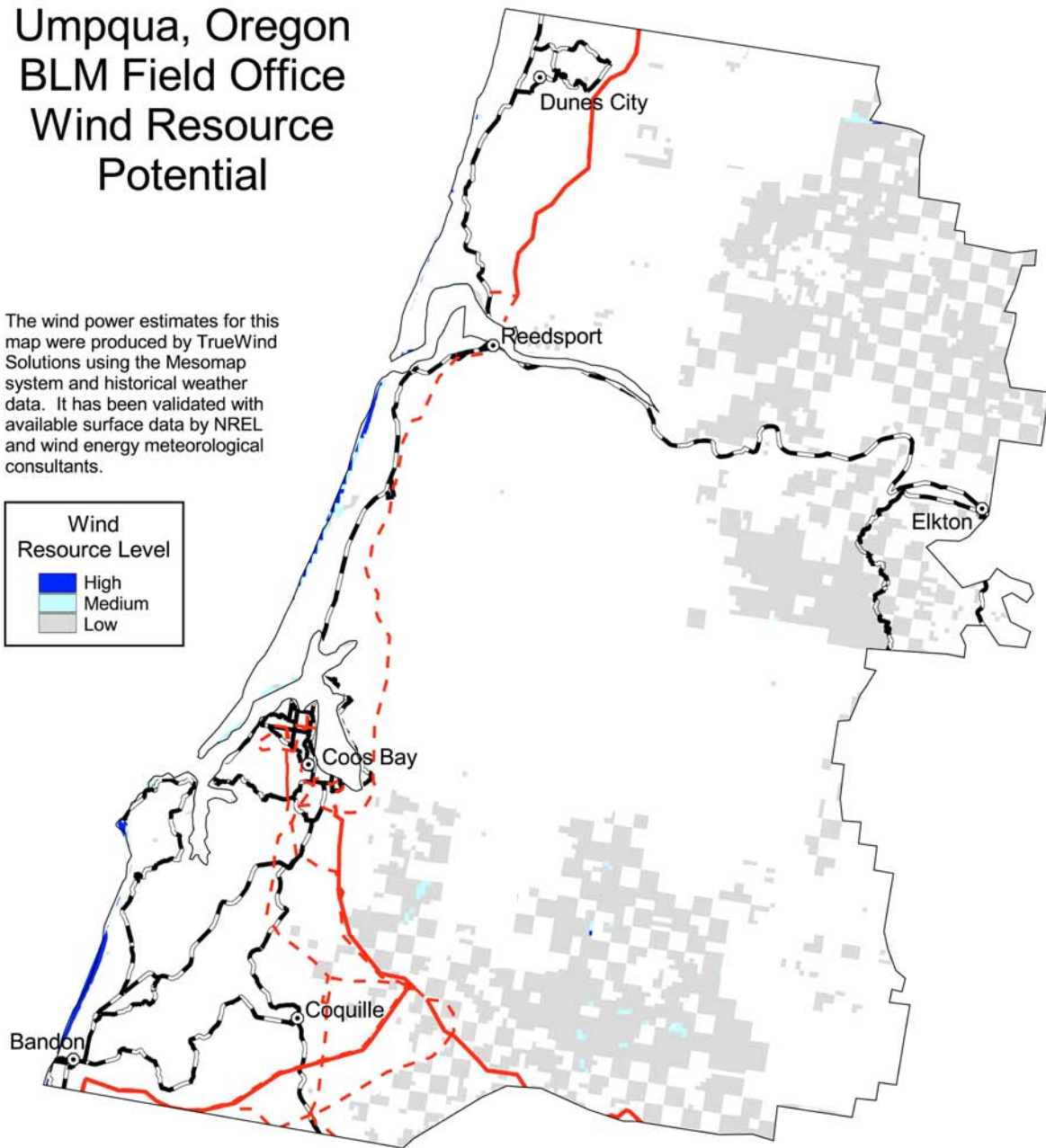
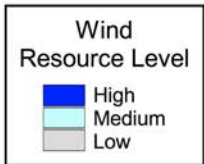
U.S. Department of Energy  
National Renewable Energy Laboratory



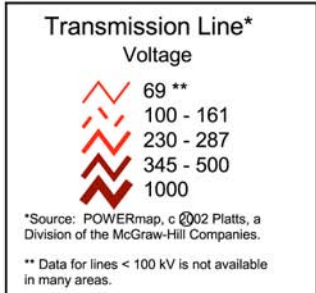
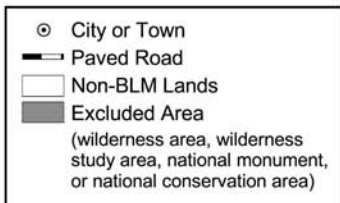
12-MAY-2004 11.1.1

# Umpqua, Oregon BLM Field Office Wind Resource Potential

The wind power estimates for this map were produced by TrueWind Solutions using the Mesomap system and historical weather data. It has been validated with available surface data by NREL and wind energy meteorological consultants.



5 0 5 10 Miles



U.S. Department of the Interior  
Bureau of Land Management



U.S. Department of Energy  
National Renewable Energy Laboratory



12-MAY-2004 11.1.4