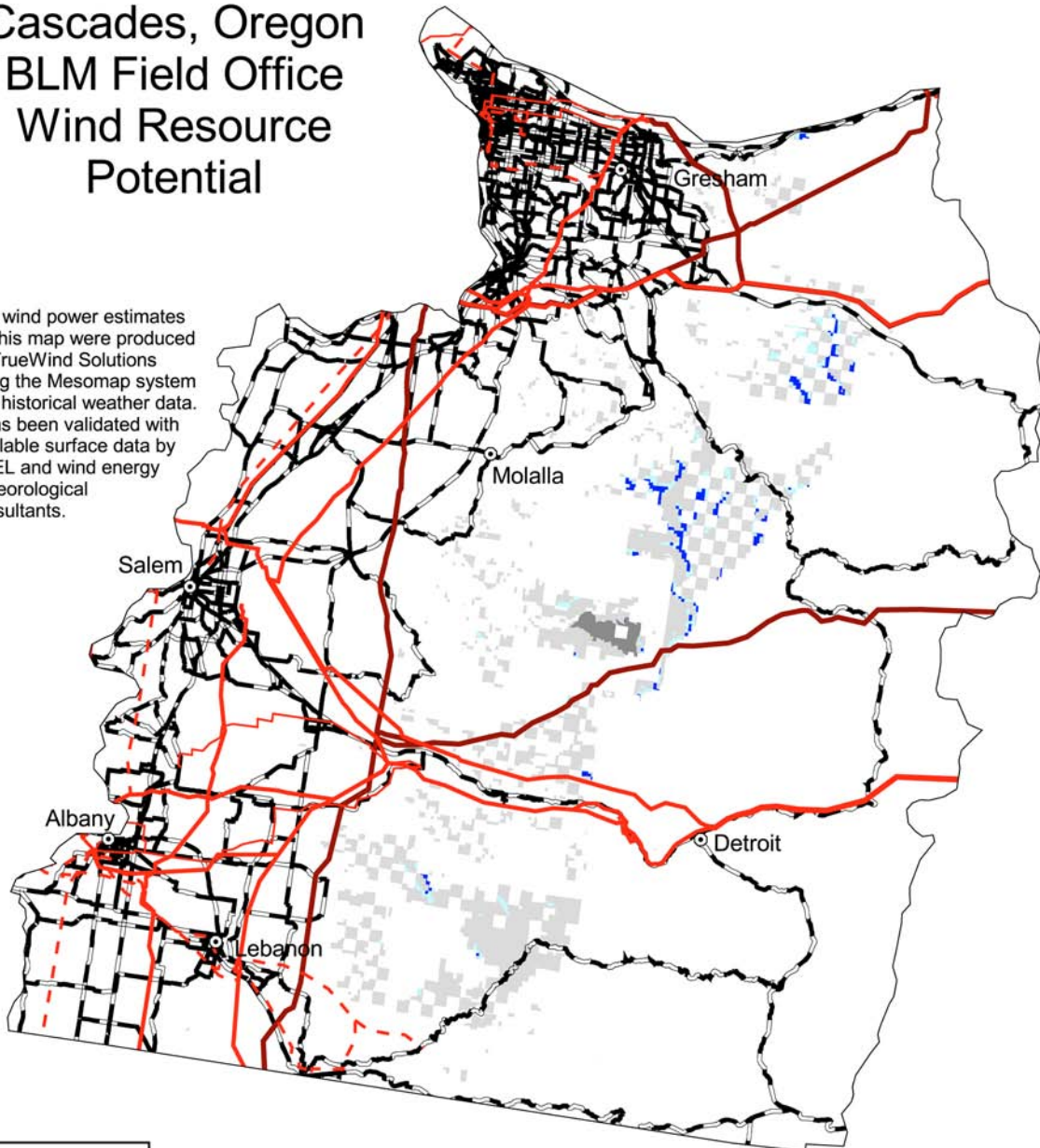


# Cascades, Oregon BLM Field Office Wind Resource Potential

The wind power estimates for this map were produced by TrueWind Solutions using the Mesomap system and historical weather data. It has been validated with available surface data by NREL and wind energy meteorological consultants.



10 0 10 20 Miles

**Wind Resource Level**

- High
- Medium
- Low

- City or Town
- Paved Road
- Non-BLM Lands
- Excluded Area  
(wilderness area, wilderness study area, national monument, or national conservation area)

**Transmission Line\***  
Voltage

- 69 \*\*
- 100 - 161
- 230 - 287
- 345 - 500
- 1000

\*Source: POWERmap, ©2002 Platts, a Division of the McGraw-Hill Companies.  
\*\* Data for lines < 100 kV is not available in many areas.

U.S. Department of the Interior  
Bureau of Land Management

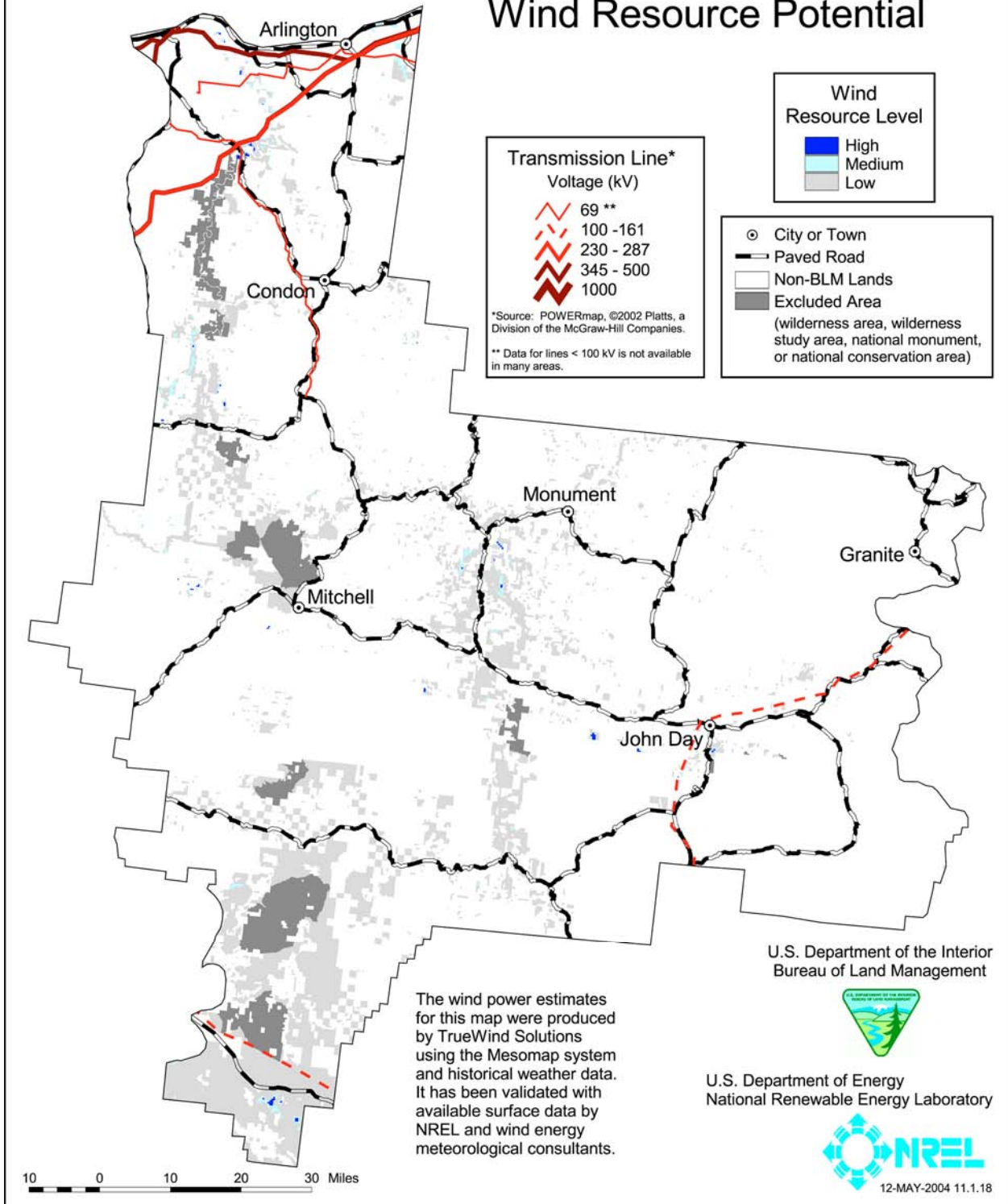


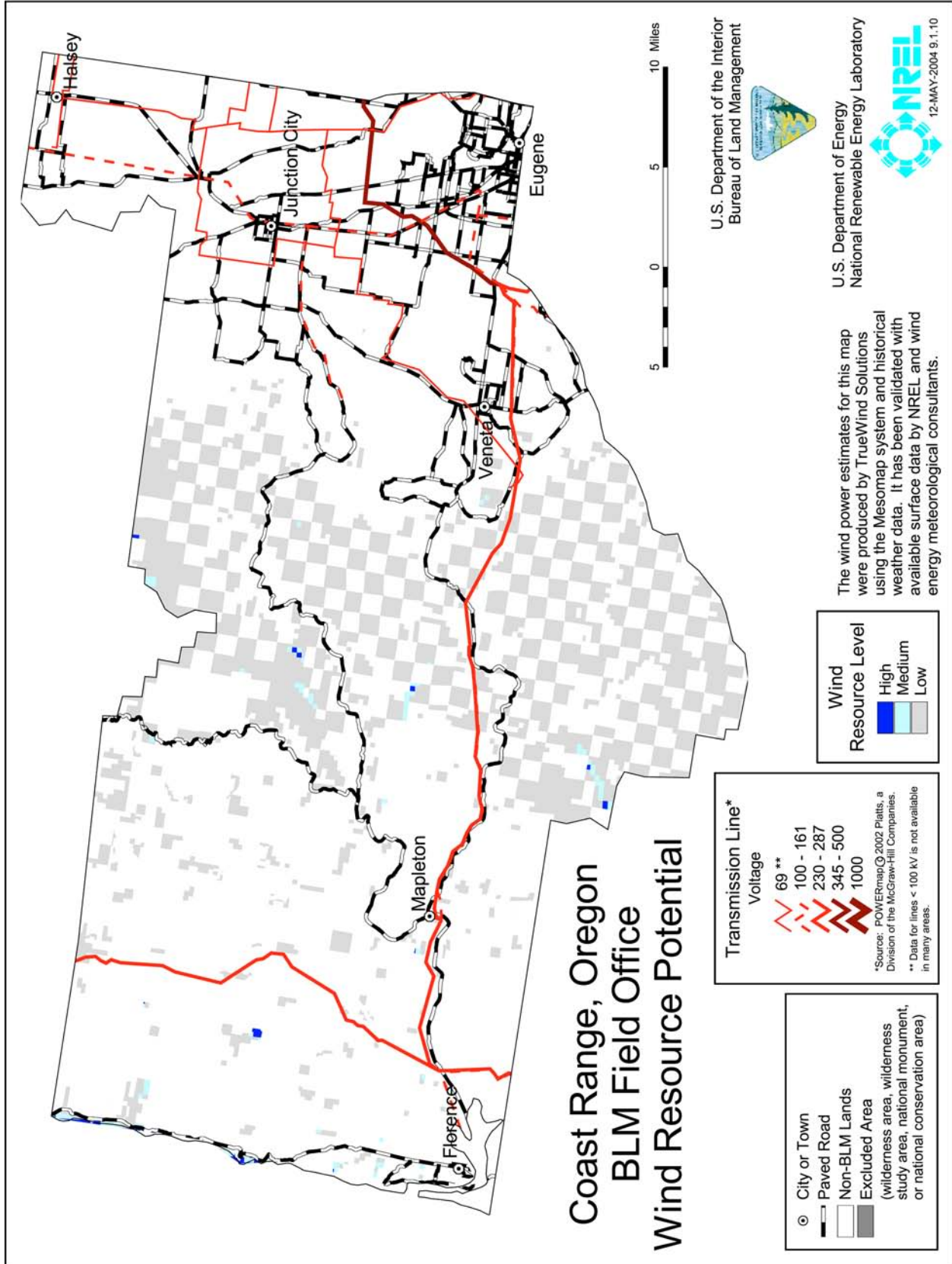
U.S. Department of Energy  
National Renewable Energy Laboratory



12-MAY-2004 11.1.5

# Central Oregon, Oregon BLM Field Office Wind Resource Potential





# Coast Range, Oregon BLM Field Office Wind Resource Potential

○ City or Town  
 — Paved Road  
 □ Non-BLM Lands  
 ■ Excluded Area  
 (wilderness area, wilderness study area, national monument, or national conservation area)

**Transmission Line\***  
 Voltage  
 69 \*\*  
 100 - 161  
 230 - 287  
 345 - 500  
 1000  
\*Source: POWERmap© 2002 Platts, a Division of the McGraw-Hill Companies.  
 \*\* Data for lines < 100 KV is not available in many areas.

**Wind Resource Level**  
 High  
 Medium  
 Low

The wind power estimates for this map were produced by TrueWind Solutions using the Mesomap system and historical weather data. It has been validated with available surface data by NREL and wind energy meteorological consultants.

U.S. Department of the Interior  
Bureau of Land Management

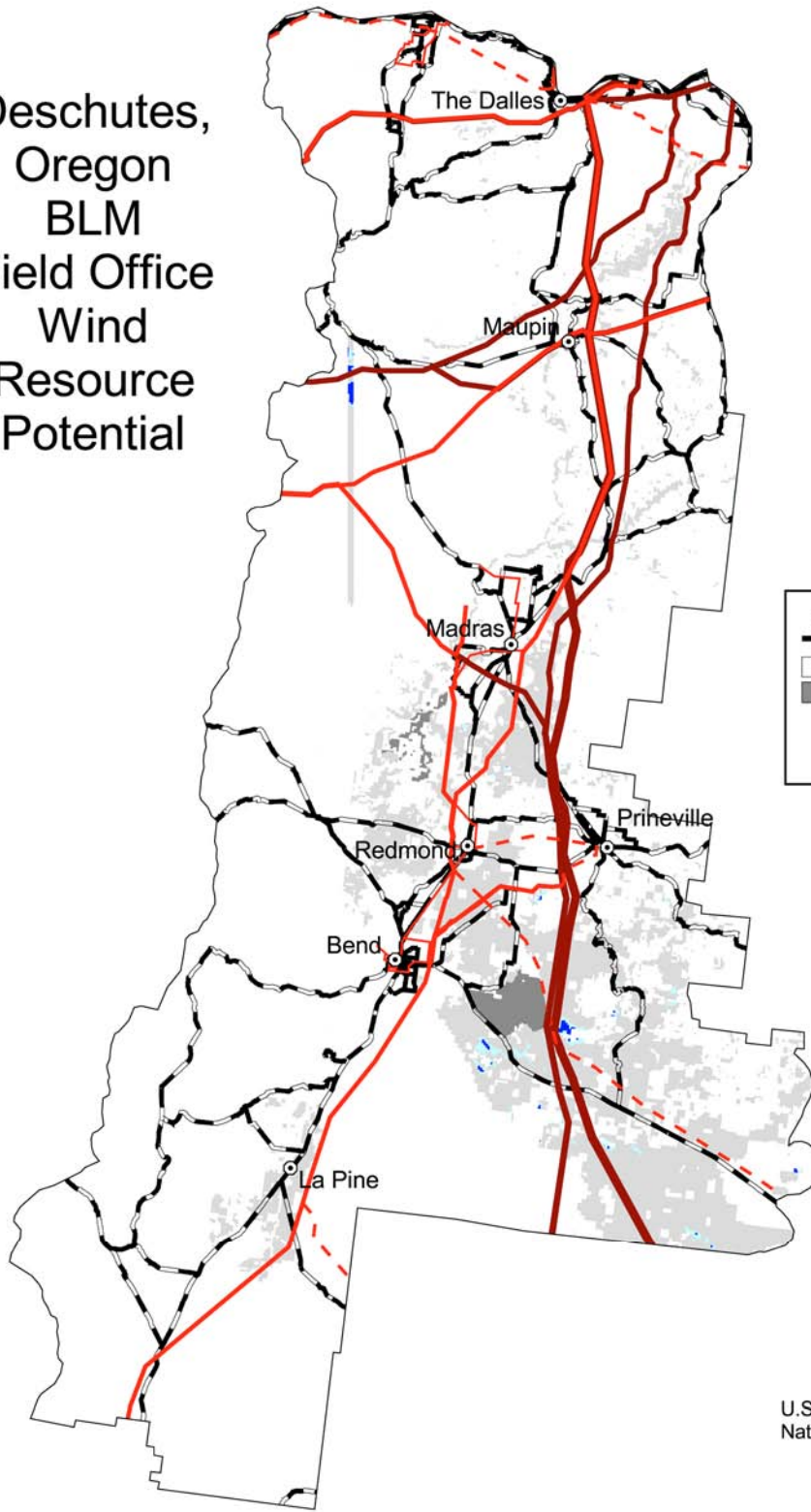


U.S. Department of Energy  
National Renewable Energy Laboratory



12-MAY-2004 9.1.10

# Deschutes, Oregon BLM Field Office Wind Resource Potential



The wind power estimates for this map were produced by TrueWind Solutions using the Mesomap system and historical weather data. It has been validated with available surface data by NREL and wind energy meteorological consultants.

**Wind Resource Level**

- High
- Medium
- Low

- City or Town
- Paved Road
- Non-BLM Lands
- Excluded Area  
(wilderness area, wilderness study area, national monument, or national conservation area)

**Transmission Line\***  
Voltage (kV)

- 69 \*\*
- 100 - 161
- 230 - 287
- 345 - 500
- 1000

\*Source: POWERmap, ©2002 Platts, a Division of the McGraw-Hill Companies.  
\*\* Data for lines < 100 kV is not available in many areas.

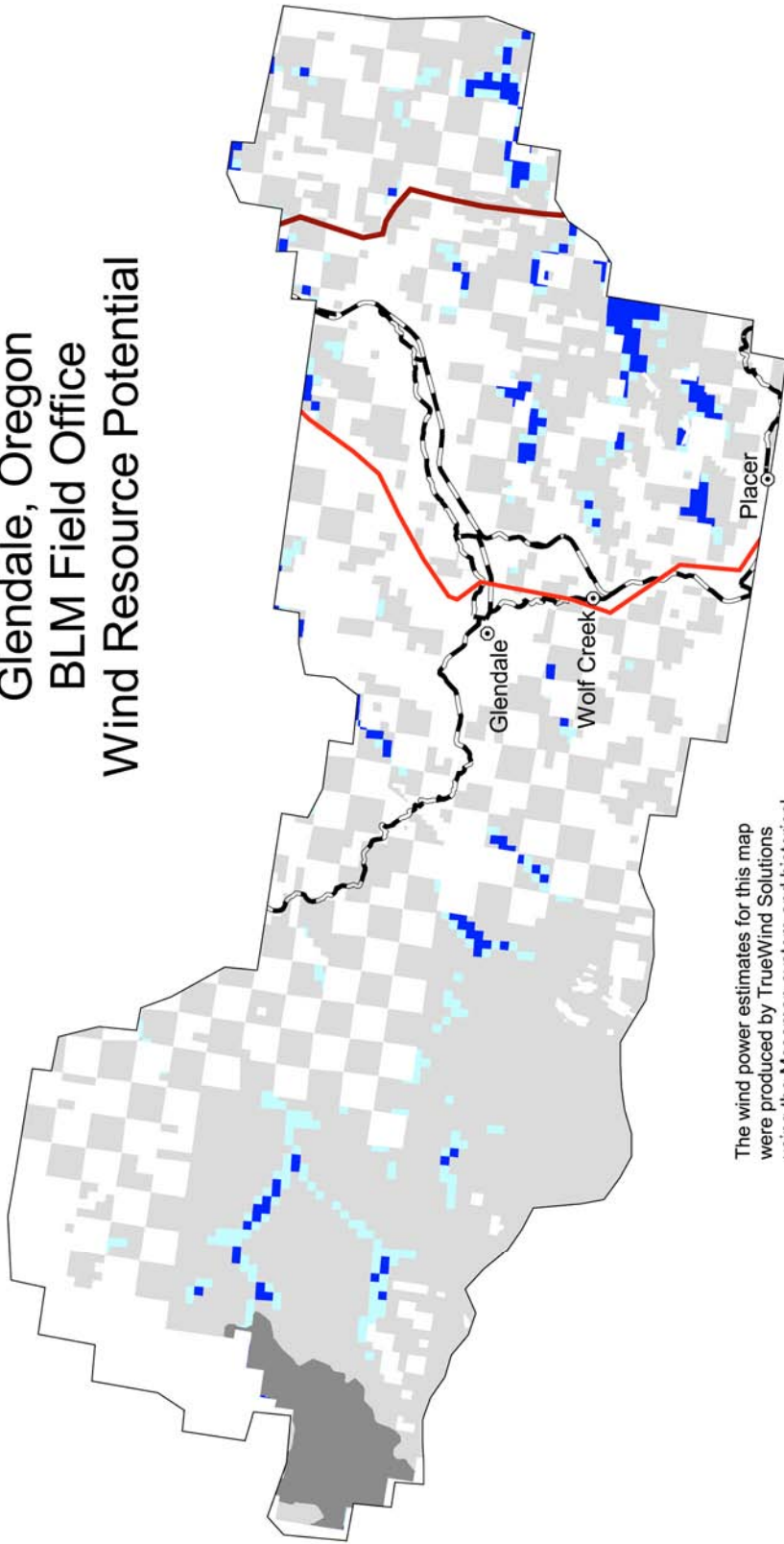
U.S. Department of the Interior  
Bureau of Land Management



U.S. Department of Energy  
National Renewable Energy Laboratory



# Glendale, Oregon BLM Field Office Wind Resource Potential



The wind power estimates for this map were produced by TrueWind Solutions using the Mesomap system and historical weather data. It has been validated with available surface data by NREL and wind energy meteorological consultants.

**Transmission Line\***  
Voltage (kV)

- 69 \*\*
- 100 - 161
- 230 - 287
- 345 - 500
- 1000

\*Source: POWERmap, ©2002 Platts, a Division of the McGraw-Hill Companies.  
\*\* Data for lines < 100 kV is not available in many areas.

- City or Town
- Paved Road
- Non-BLM Lands
- Excluded Area (wilderness area, wilderness study area, national monument, or national conservation area)

**Wind Resource Level**

- High
- Medium
- Low

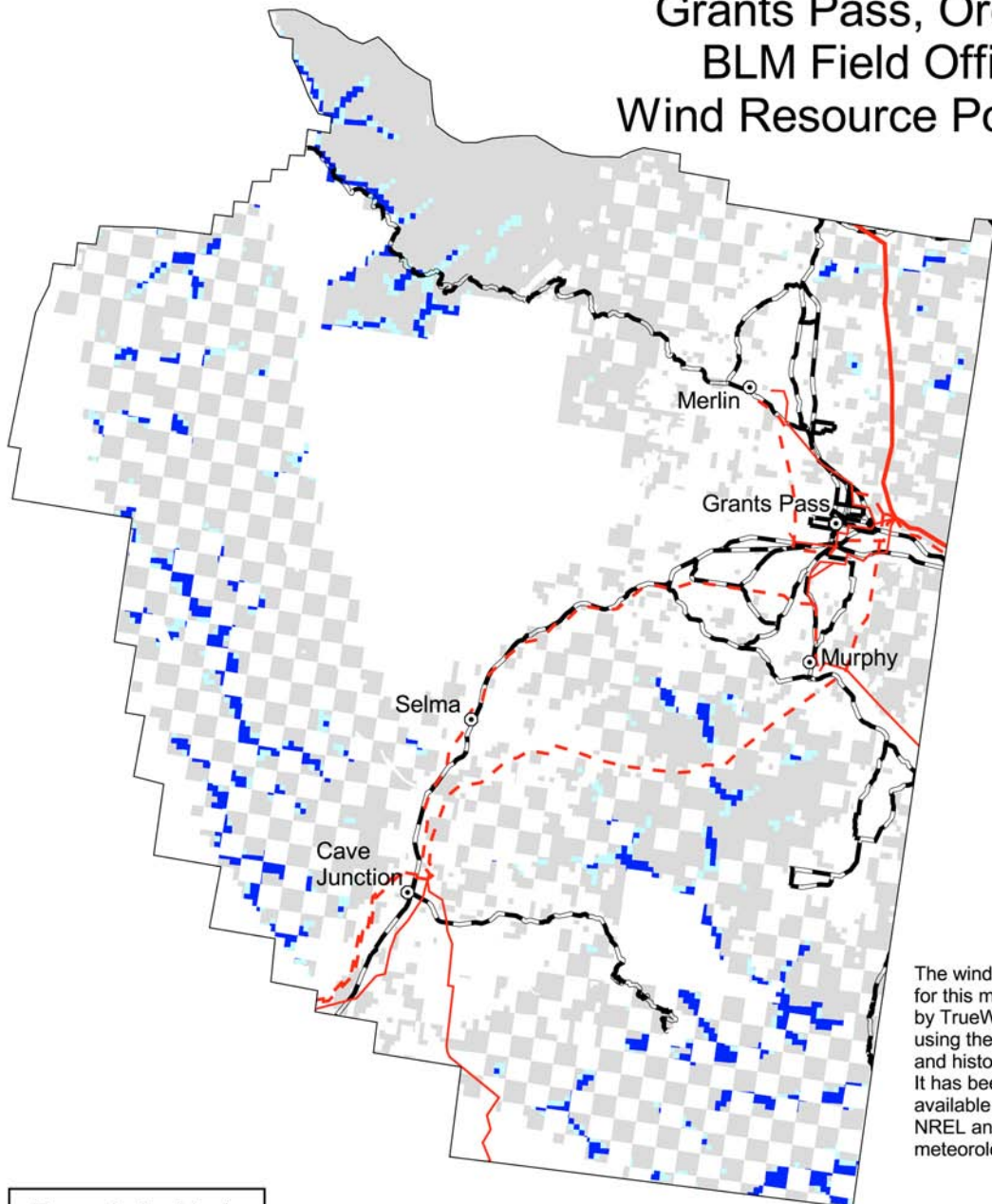


U.S. Department of the Interior  
Bureau of Land Management

U.S. Department of Energy  
National Renewable Energy Laboratory

12-MAY-2004 11.1.11

# Grants Pass, Oregon BLM Field Office Wind Resource Potential



The wind power estimates for this map were produced by TrueWind Solutions using the Mesomap system and historical weather data. It has been validated with available surface data by NREL and wind energy meteorological consultants.

**Transmission Line\***  
Voltage (kV)

- 69 \*\*
- 100 - 161
- 230 - 287
- 345 - 500
- 1000

\*Source: POWERmap, ©2002 Platts, a Division of the McGraw-Hill Companies.  
\*\* Data for lines < 100 kV is not available in many areas.

**Wind Resource Level**

- High
- Medium
- Low

- City or Town
- Paved Road
- Non-BLM Lands
- Excluded Area  
(wilderness area, wilderness study area, national monument, or national conservation area)



U.S. Department of the Interior  
Bureau of Land Management



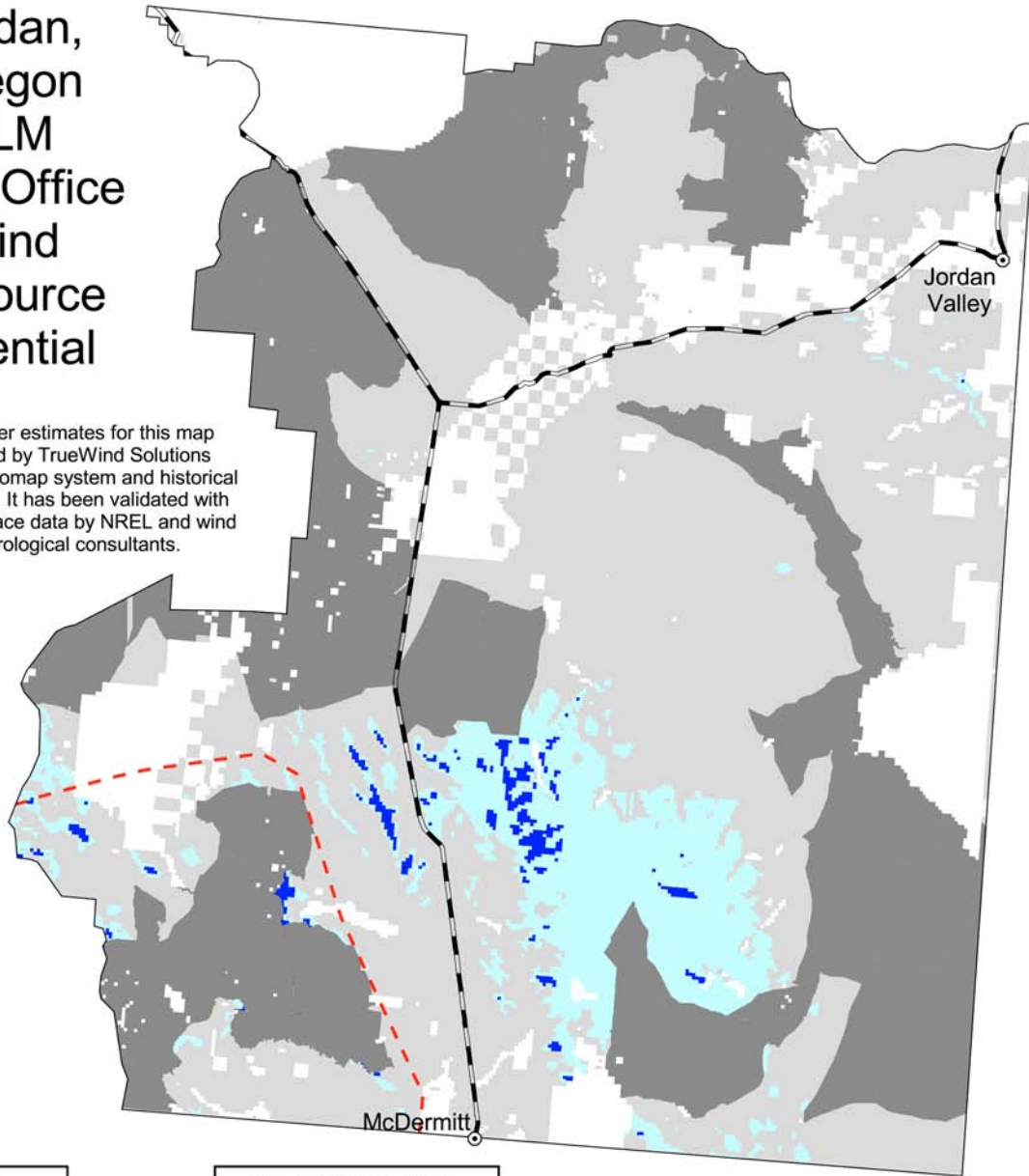
U.S. Department of Energy  
National Renewable Energy Laboratory



12-MAY 2004 11.1.12

# Jordan, Oregon BLM Field Office Wind Resource Potential

The wind power estimates for this map were produced by TrueWind Solutions using the Mesomap system and historical weather data. It has been validated with available surface data by NREL and wind energy meteorological consultants.



**Wind Resource Level**

- High
- Medium
- Low

- City or Town
- Paved Road
- Non-BLM Lands
- Excluded Area  
(wilderness area, wilderness study area, national monument, or national conservation area)

**Transmission Line\***

Voltage

- 69 \*\*
- 100 - 161
- 230 - 287
- 345 - 500
- 1000

\*Source: POWERmap, ©2002 Platts, a Division of the McGraw-Hill Companies.  
\*\* Data for lines < 100 kV is not available in many areas.

U.S. Department of the Interior  
Bureau of Land Management



U.S. Department of Energy  
National Renewable Energy Laboratory



12-MAY-2004 11.1.23