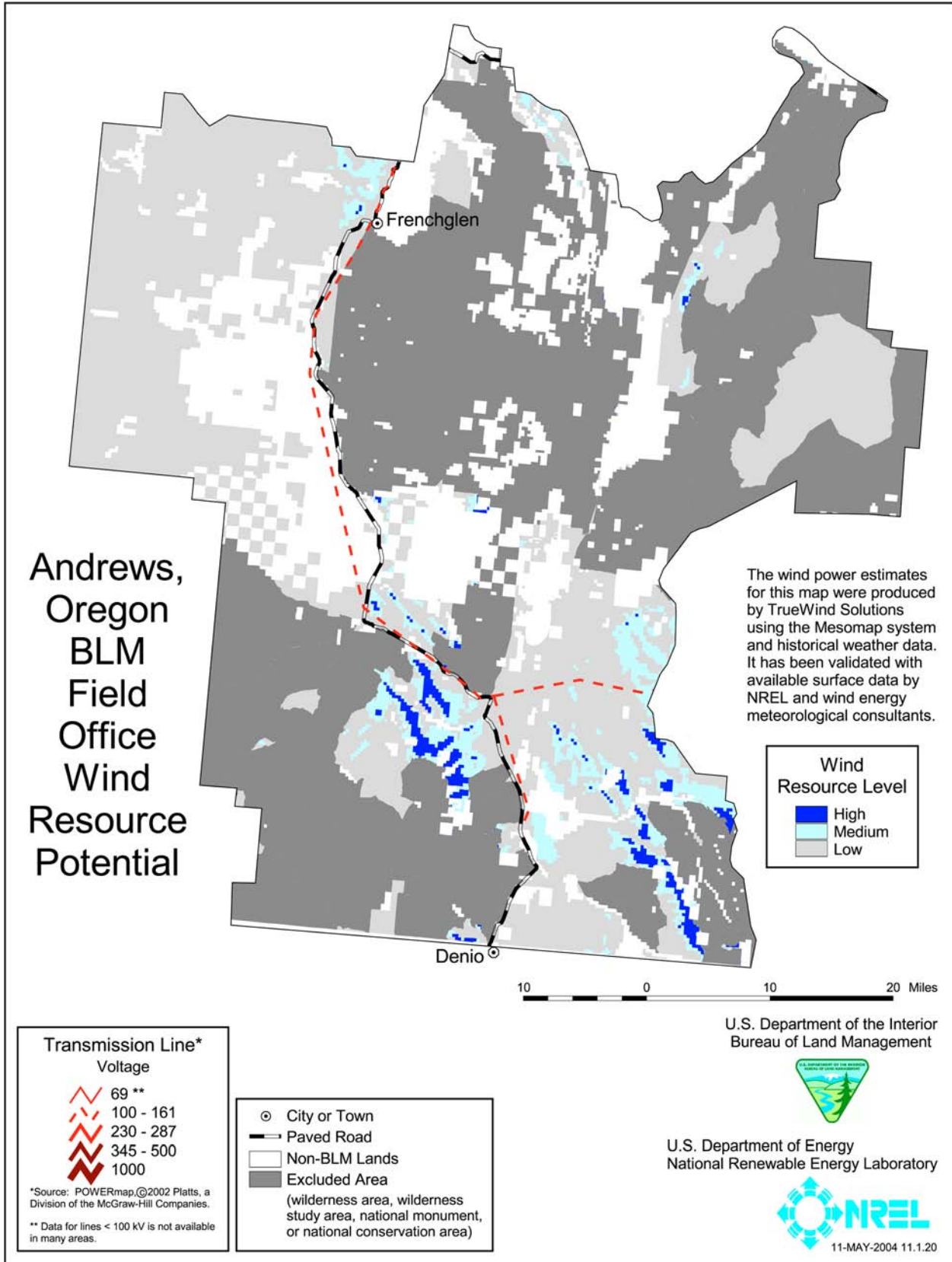
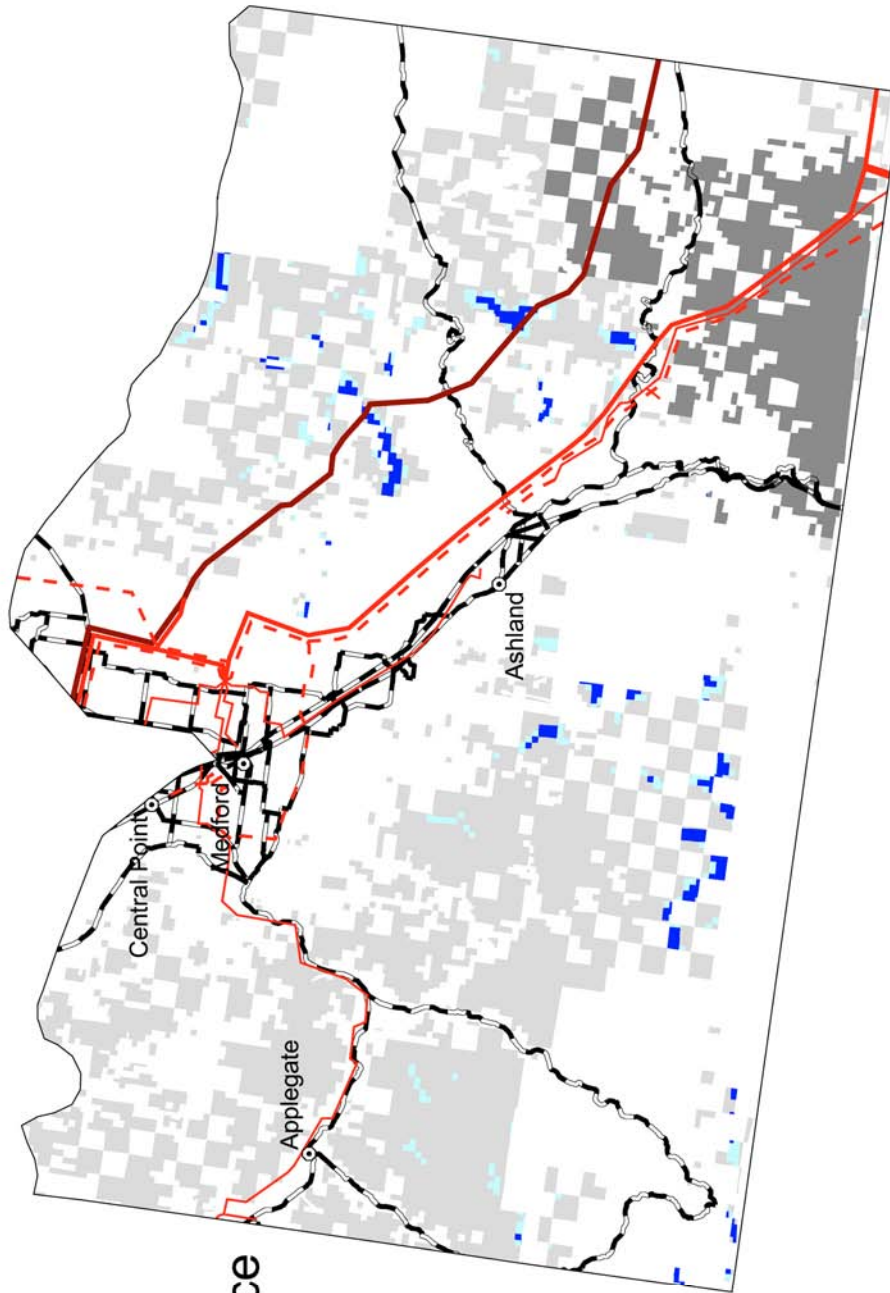


FIGURE B-10 Index Map Showing Locations of Field Office Boundaries in Oregon



Ashland, Oregon BLM Field Office Wind Resource Potential

The wind power estimates for this map were produced by TrueWind Solutions using the Mesomap system and historical weather data. It has been validated with available surface data by NREL and wind energy meteorological consultants.



**Transmission Line*
Voltage**

- 69 **
- 100 - 161
- 230 - 287
- 345 - 500
- 1000

*Source: POWERmap© 2002 Plattis, a Division of the McGraw-Hill Companies.
** Data for lines < 100 kV is not available in many areas.

- ⊙ City or Town
- Paved Road
- Non-BLM Lands
- Excluded Area (wilderness area, wilderness study area, national monument, or national conservation area)

Wind Resource Level

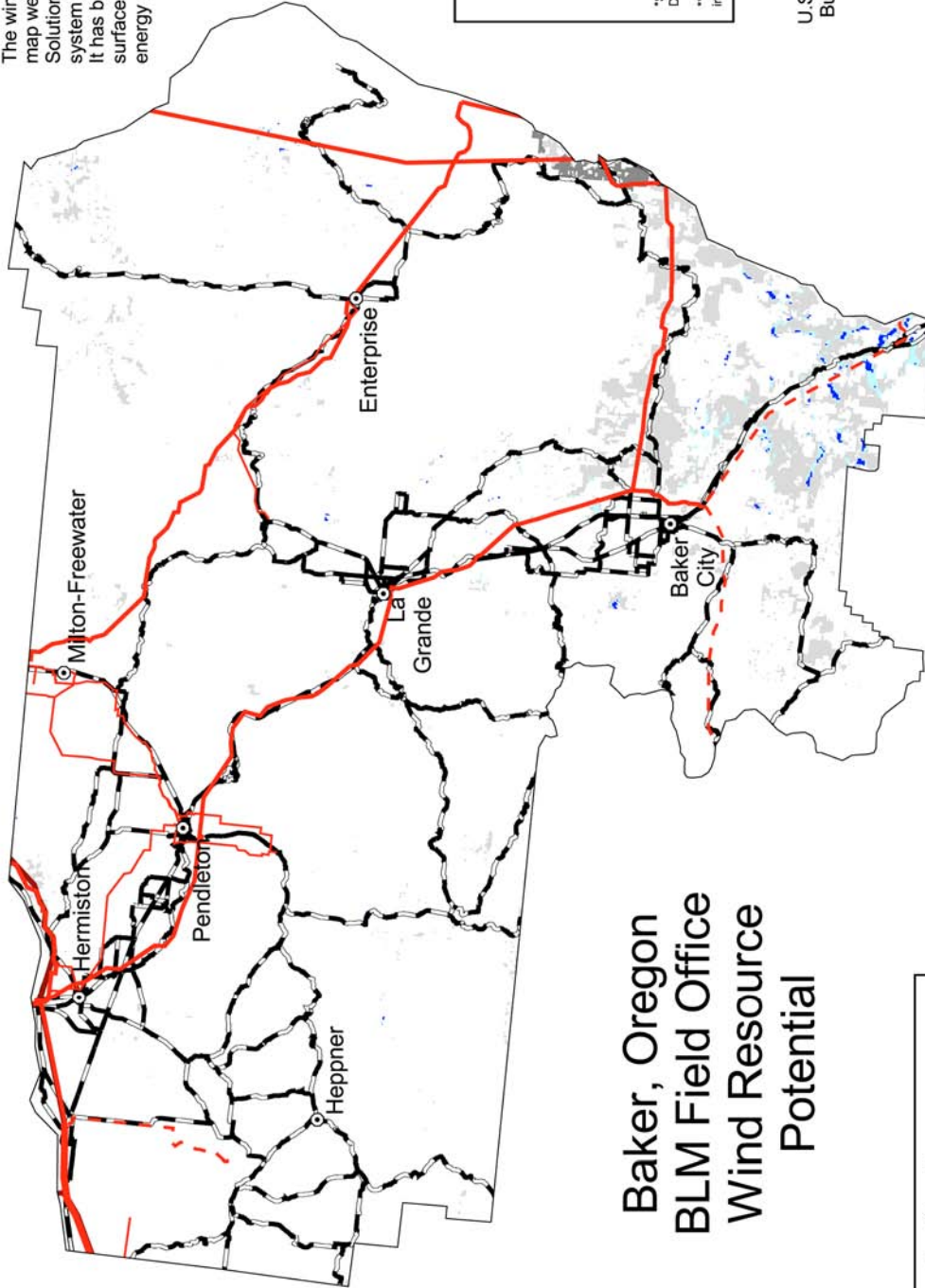
- High
- Medium
- Low

U.S. Department of the Interior
Bureau of Land Management

U.S. Department of Energy
National Renewable Energy Laboratory

12-MAY-2004 11.1.14

The wind power estimates for this map were produced by TrueWind Solutions using the Mesomap system and historical weather data. It has been validated with available surface data by NREL and wind energy meteorological consultants.



Baker, Oregon BLM Field Office Wind Resource Potential

- City or Town
- Paved Road
- Non-BLM Lands
- Excluded Area
(wilderness area, wilderness study area, national monument, or national conservation area)

- Wind Resource Level
- High
- Medium
- Low

- Transmission Line*
 - Voltage
 - 69 **
 - 100 - 161
 - 230 - 287
 - 345 - 500
 - 1000
- *Source: POWERmapQ 2002 Platts, a Division of the McGraw-Hill Companies.
 ** Data for lines < 100 KV is not available in many areas.

U.S. Department of the Interior
Bureau of Land Management



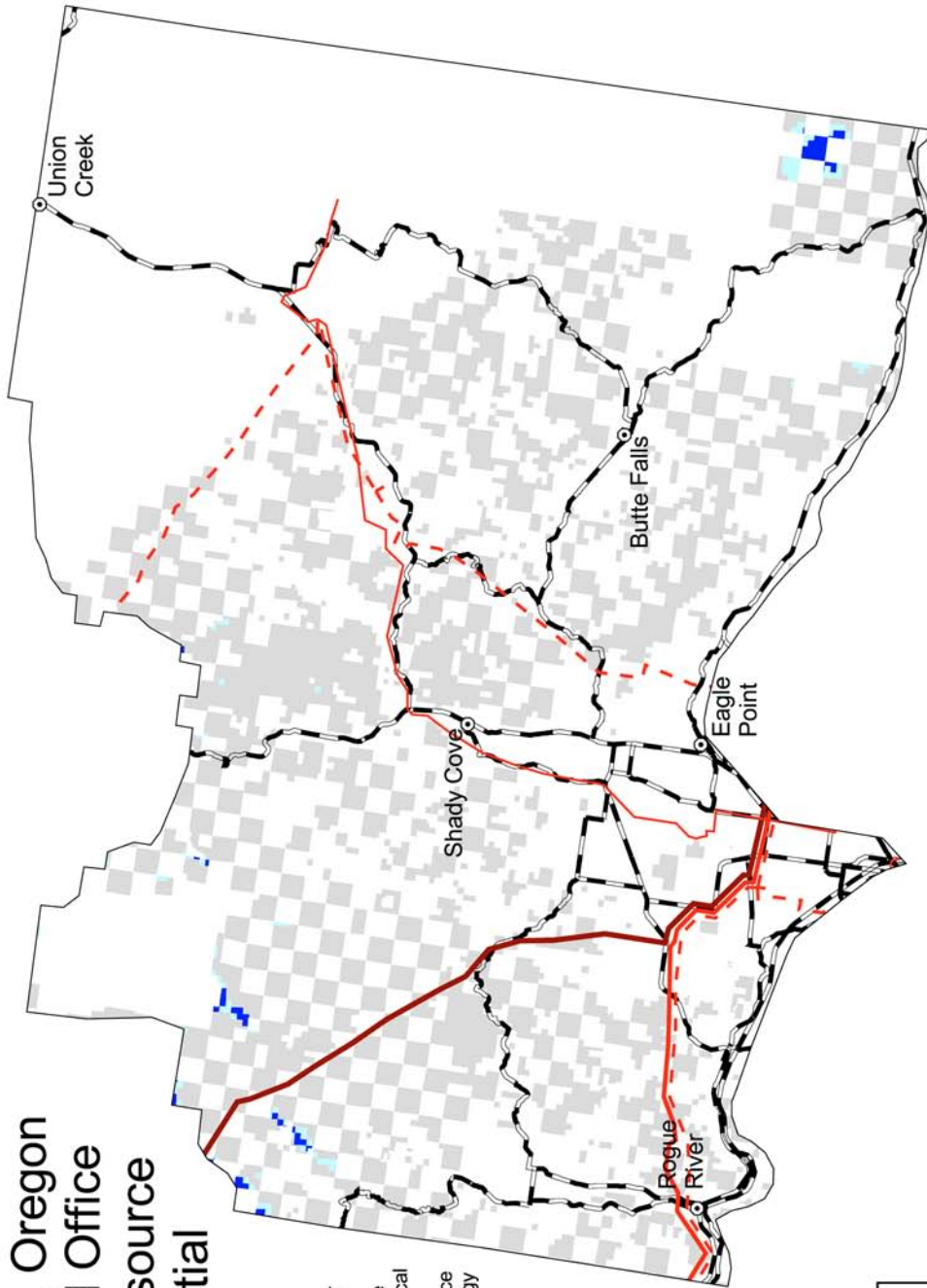
U.S. Department of Energy
National Renewable
Energy Laboratory



12-MAY-2004 11.1.21

Butte Falls, Oregon BLM Field Office Wind Resource Potential

The wind power estimates for this map were produced by TrueWind Solutions using the Mesomap system and historical weather data. It has been validated with available surface data by NREL and wind energy meteorological consultants.



Wind Resource Level

High	Medium	Low
------	--------	-----

- City or Town
- Paved Road
- Non-BLM Lands
- Excluded Area (wilderness area, wilderness study area, national monument, or national conservation area)

**Transmission Line*
Voltage**

69 **
100 - 161
230 - 287
345 - 500
1000

*Source: POWERmap, ©2002 Platt, a Division of the McGraw-Hill Companies.
** Data for lines < 100 kV is not available in many areas.

U.S. Department of the Interior
Bureau of Land Management

U.S. Department of Energy
National Renewable Energy Laboratory

12-MAY-2004 11.1.13