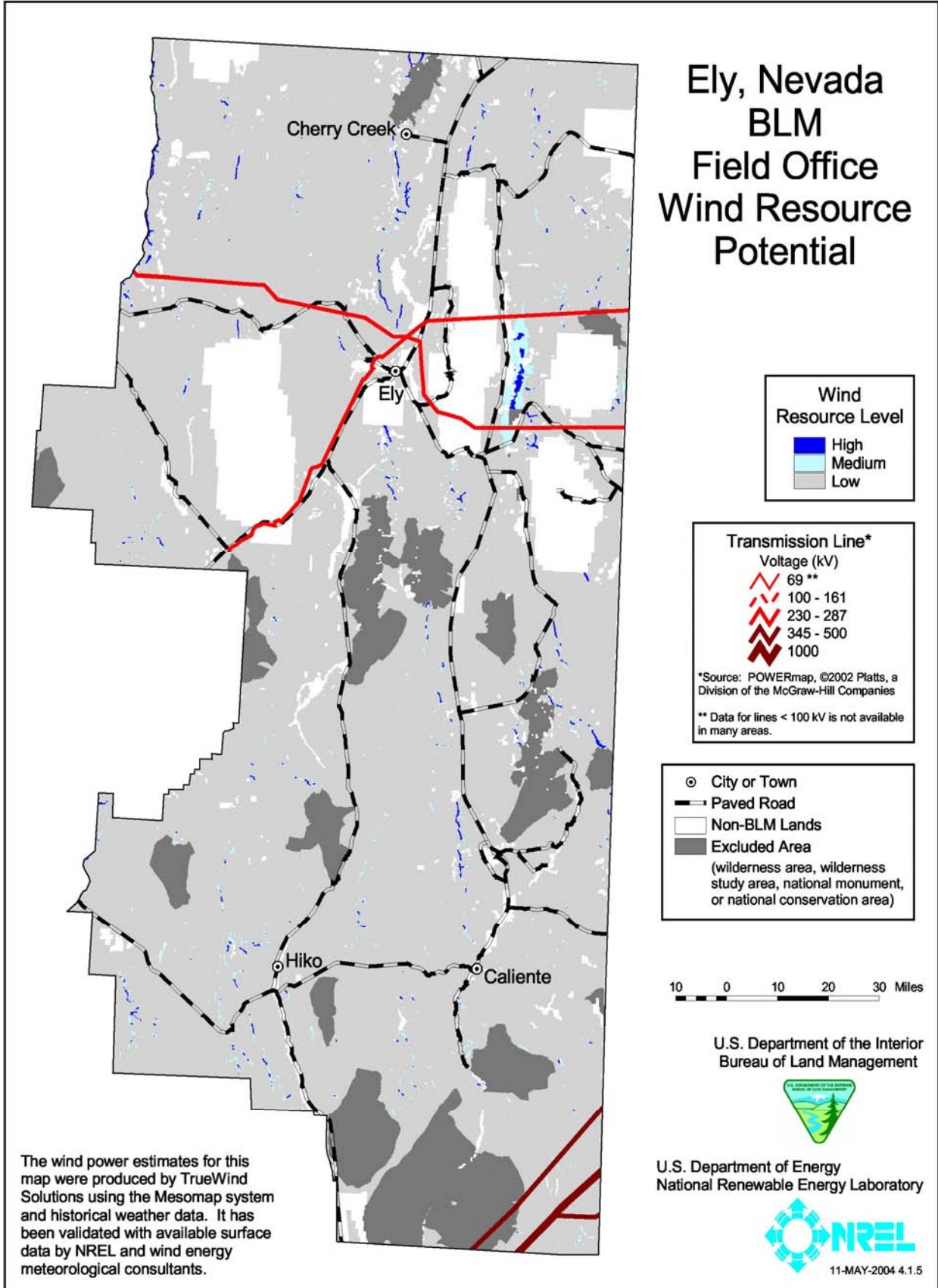
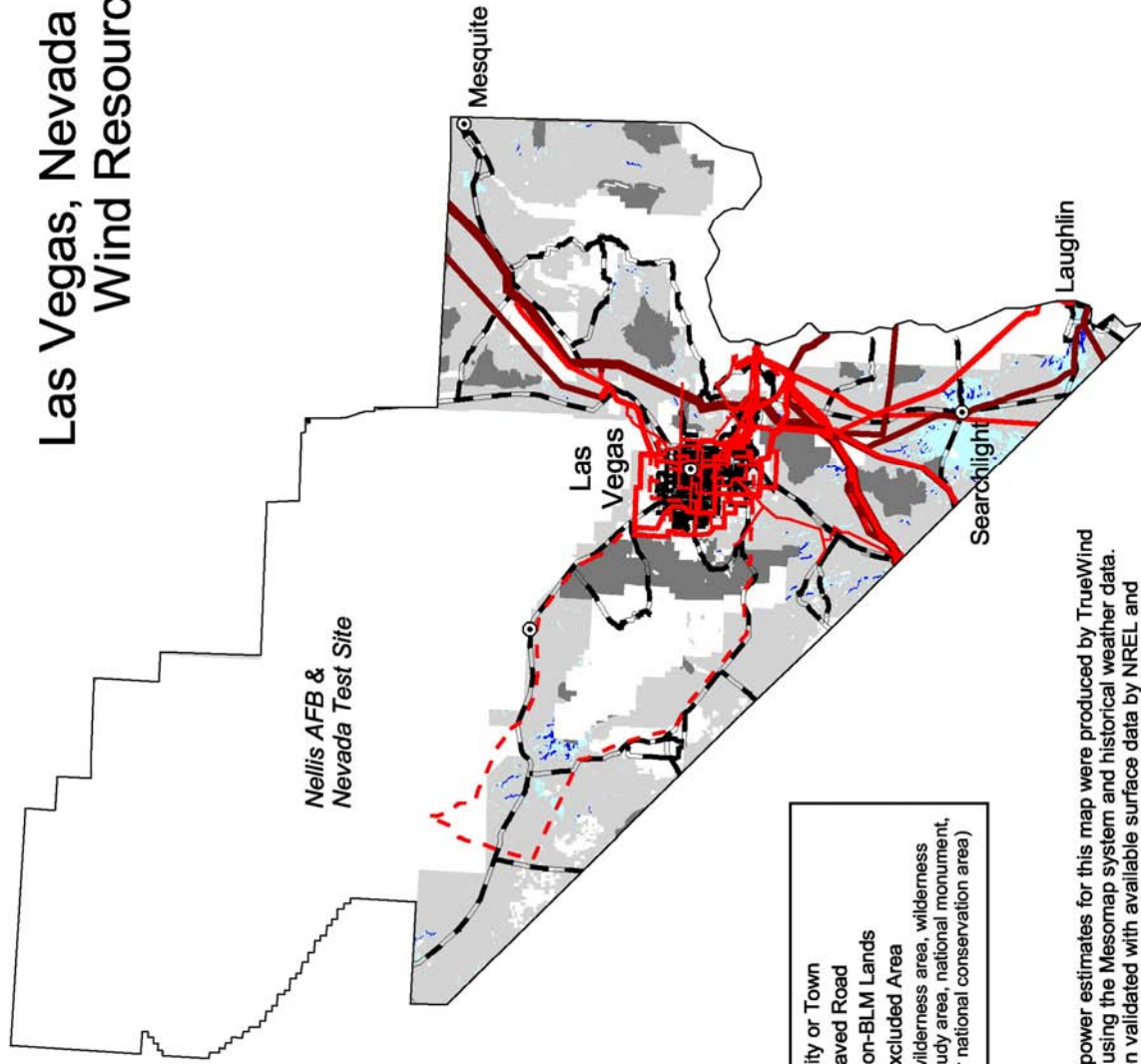


Ely, Nevada BLM Field Office Wind Resource Potential



The wind power estimates for this map were produced by TrueWind Solutions using the Mesomap system and historical weather data. It has been validated with available surface data by NREL and wind energy meteorological consultants.

Las Vegas, Nevada BLM Field Office Wind Resource Potential



Wind Resource Level

High	Medium	Low

Transmission Line*

Voltage (kV)

	69 **
	100 - 161
	230 - 287
	345 - 500
	1000

*Source: POWERmap, ©2002 Platt's, a Division of the McGraw-Hill Companies
 ** Data for lines < 100 kV is not available in many areas.

	City or Town
	Paved Road
	Non-BLM Lands
	Excluded Area (wilderness area, wilderness study area, national monument, or national conservation area)

The wind power estimates for this map were produced by TrueWind Solutions using the Mesomap system and historical weather data. It has been validated with available surface data by NREL and wind energy meteorological consultants.

U.S. Department of the Interior
Bureau of Land Management

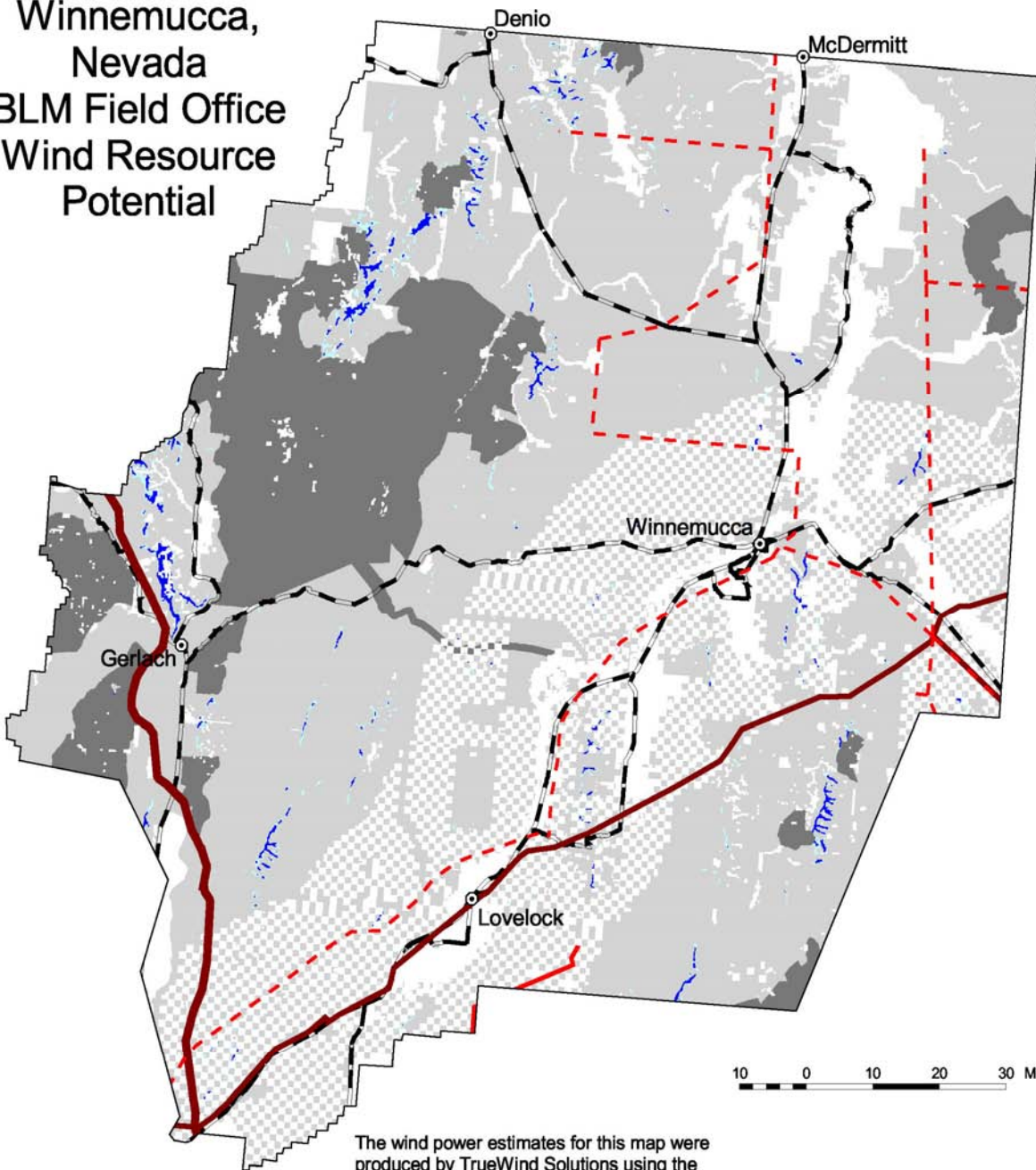


U.S. Department of Energy
National Renewable Energy Laboratory



15-JUN-2004 4.1.2

**Winnemucca,
Nevada
BLM Field Office
Wind Resource
Potential**



The wind power estimates for this map were produced by TrueWind Solutions using the Mesomap system and historical weather data. It has been validated with available surface data by NREL and wind energy meteorological consultants.

U.S. Department of the Interior
Bureau of Land Management



U.S. Department of Energy
National Renewable Energy Laboratory



11-MAY-2004 4.1.6

Transmission Line*
Voltage (kV)

- 69 **
- 100 - 161
- 230 - 287
- 345 - 500
- 1000

*Source: POWERmap, ©2002 Platts, a Division of the McGraw-Hill Companies
** Data for lines < 100 kV is not available in many areas.

- City or Town
- Paved Road
- Non-BLM Lands
- Excluded Area (wilderness area, wilderness study area, national monument, or national conservation area)

Wind Resource Level

- High
- Medium
- Low

