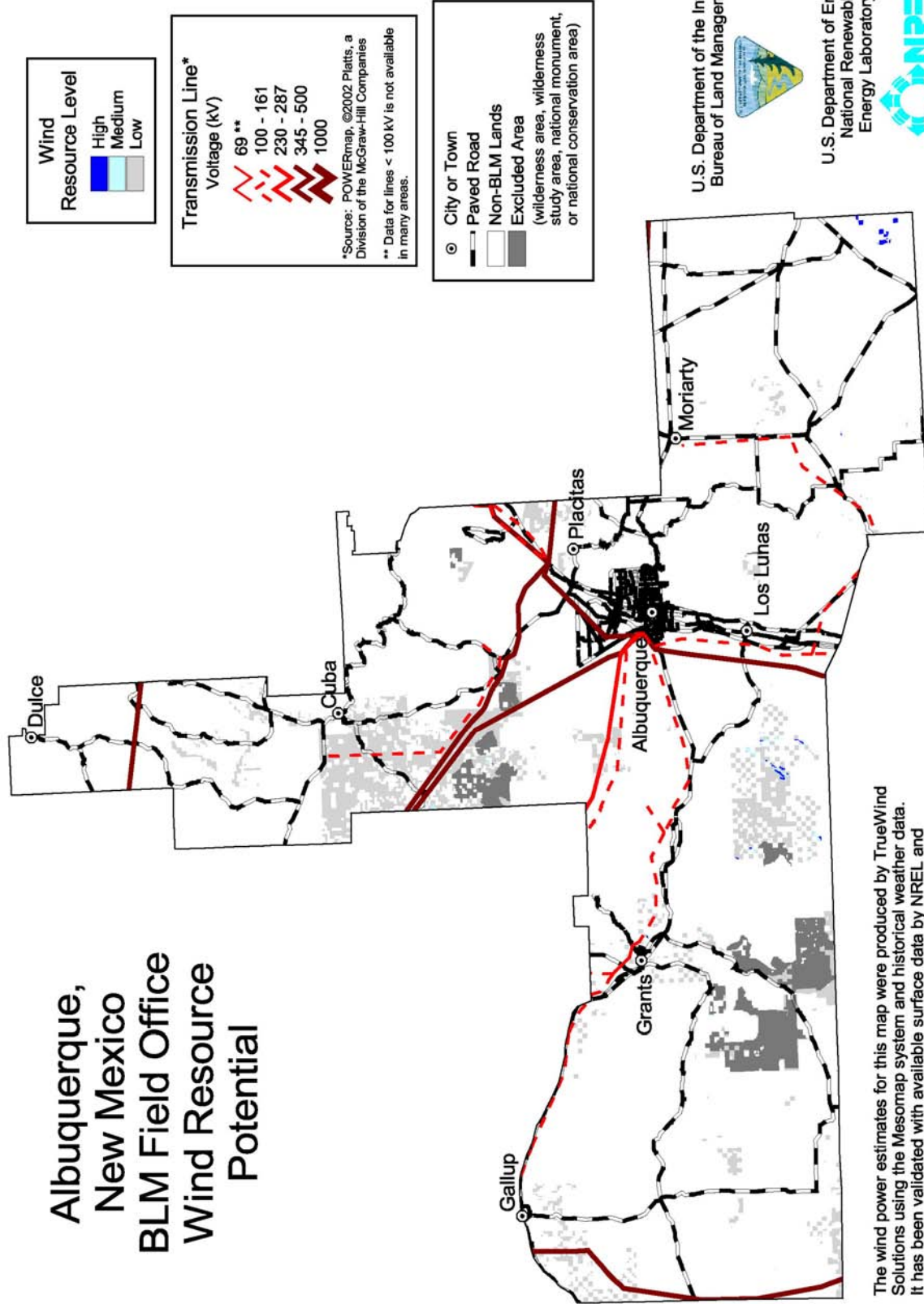


FIGURE B-9 Index Map Showing Locations of Field Office Boundaries in New Mexico

Albuquerque, New Mexico BLM Field Office Wind Resource Potential



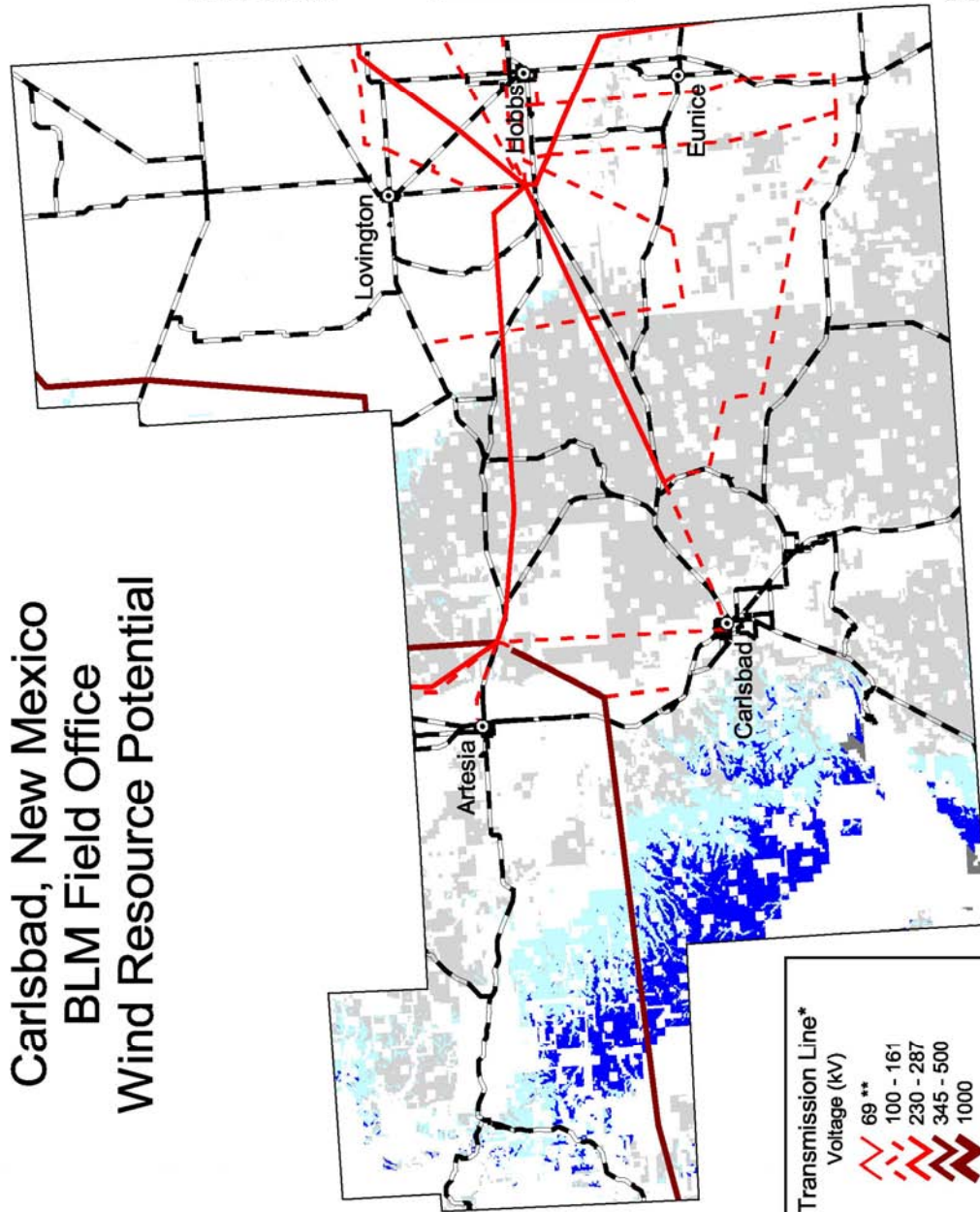
U.S. Department of the Interior
Bureau of Land Management

U.S. Department of Energy
National Renewable Energy Laboratory

NREL
19-JUL-2004 7.1.1

The wind power estimates for this map were produced by TrueWind Solutions using the Mesomap system and historical weather data. It has been validated with available surface data by NREL and wind energy meteorological consultants.

Carlsbad, New Mexico BLM Field Office Wind Resource Potential



Wind Resource Level

High
Medium
Low

The wind power estimates for this map were produced by TrueWind Solutions using the Mesomap system and historical weather data. It has been validated with available surface data by NREL and wind energy meteorological consultants.

○	City or Town
—	Paved Road
□	Non-BLM Lands
■	Excluded Area (wilderness area, wilderness study area, national monument, or national conservation area)

**Transmission Line*
Voltage (kV)**

—	69 **
—	100 - 161
—	230 - 287
—	345 - 500
—	1000

*Source: POWERmap, ©2002 Platts, a Division of the McGraw-Hill Companies
** Data for lines < 100 kV is not available in many areas.

U.S. Department of the Interior
Bureau of Land Management



U.S. Department of Energy
National Renewable Energy Laboratory



19-JUL-2004 7.1.2

