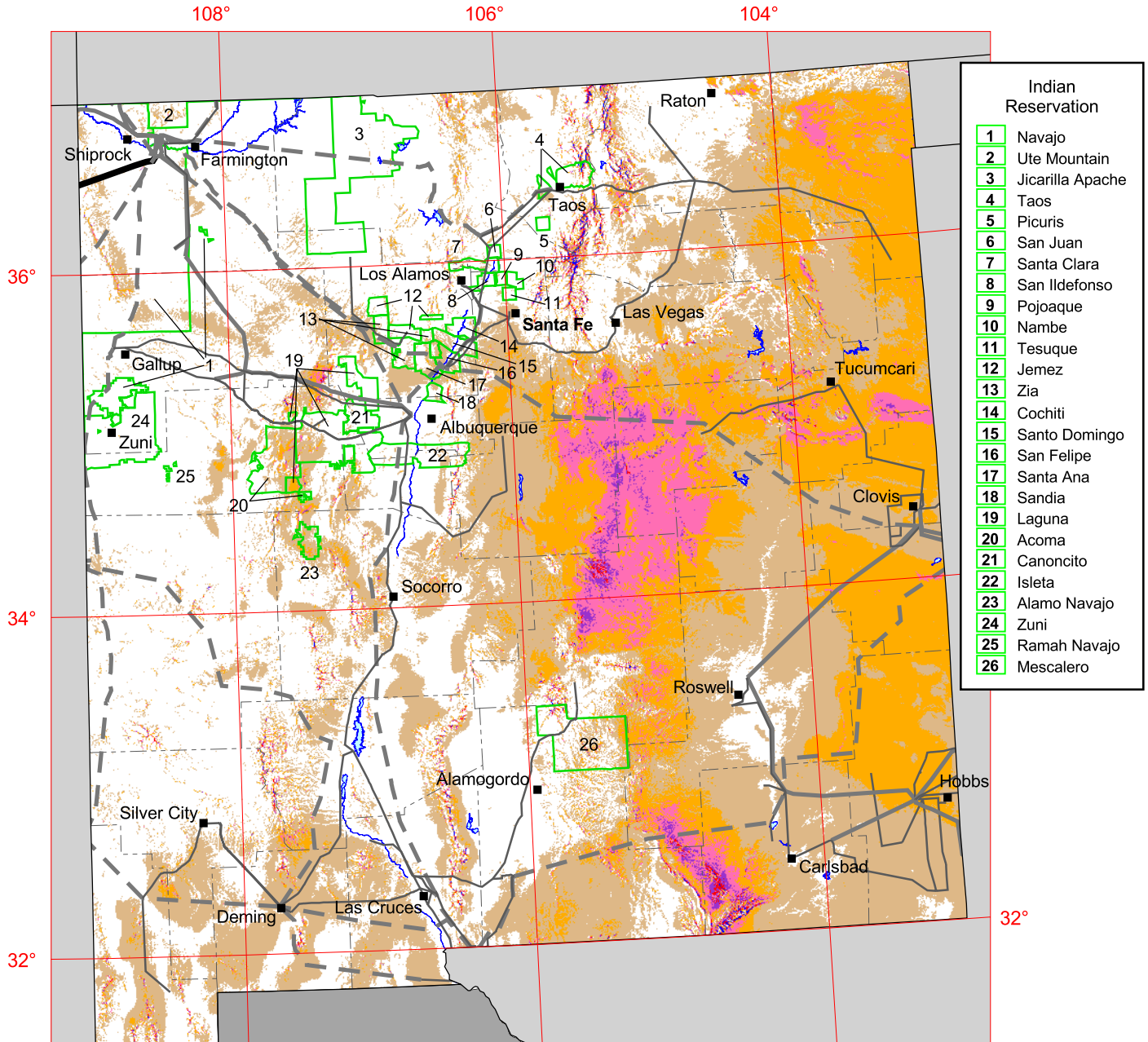
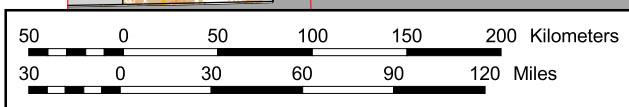


New Mexico - Wind Resource at 50 m



- Indian Reservation**
- 1 Navajo
 - 2 Ute Mountain
 - 3 Jicarilla Apache
 - 4 Taos
 - 5 Picuris
 - 6 San Juan
 - 7 Santa Clara
 - 8 San Ildefonso
 - 9 Pojoaque
 - 10 Nambe
 - 11 Tesuque
 - 12 Jemez
 - 13 Zia
 - 14 Cochiti
 - 15 Santo Domingo
 - 16 San Felipe
 - 17 Santa Ana
 - 18 Sandia
 - 19 Laguna
 - 20 Acoma
 - 21 Canoncito
 - 22 Isleta
 - 23 Alamo Navajo
 - 24 Zuni
 - 25 Ramah Navajo
 - 26 Mescalero



The annual wind power estimates for this map were produced by TrueWind Solutions using their Mesomap system and historical weather data. It has been validated with available surface data by NREL and wind energy meteorological consultants.

Wind Power Classification				
Wind Power Class	Resource Potential	Wind Power Density at 50 m W/m ²	Wind Speed ^a at 50 m m/s	Wind Speed ^a at 50 m mph
1	Poor	0 - 200	0.0 - 5.6	0.0 - 12.5
2	Marginal	200 - 300	5.6 - 6.4	12.5 - 14.3
3	Fair	300 - 400	6.4 - 7.0	14.3 - 15.7
4	Good	400 - 500	7.0 - 7.5	15.7 - 16.8
5	Excellent	500 - 600	7.5 - 8.0	16.8 - 17.9
6	Outstanding	600 - 800	8.0 - 8.8	17.9 - 19.7
7	Superb	> 800	> 8.8	> 19.7

^a Wind speeds are based on a Weibull k value of 2.0

Transmission Line*	
Voltage (kV)	
	115 - 138
	230
	345
	500

* Source: POWERmap, ©2002 Platts, a Division of the McGraw-Hill Companies

