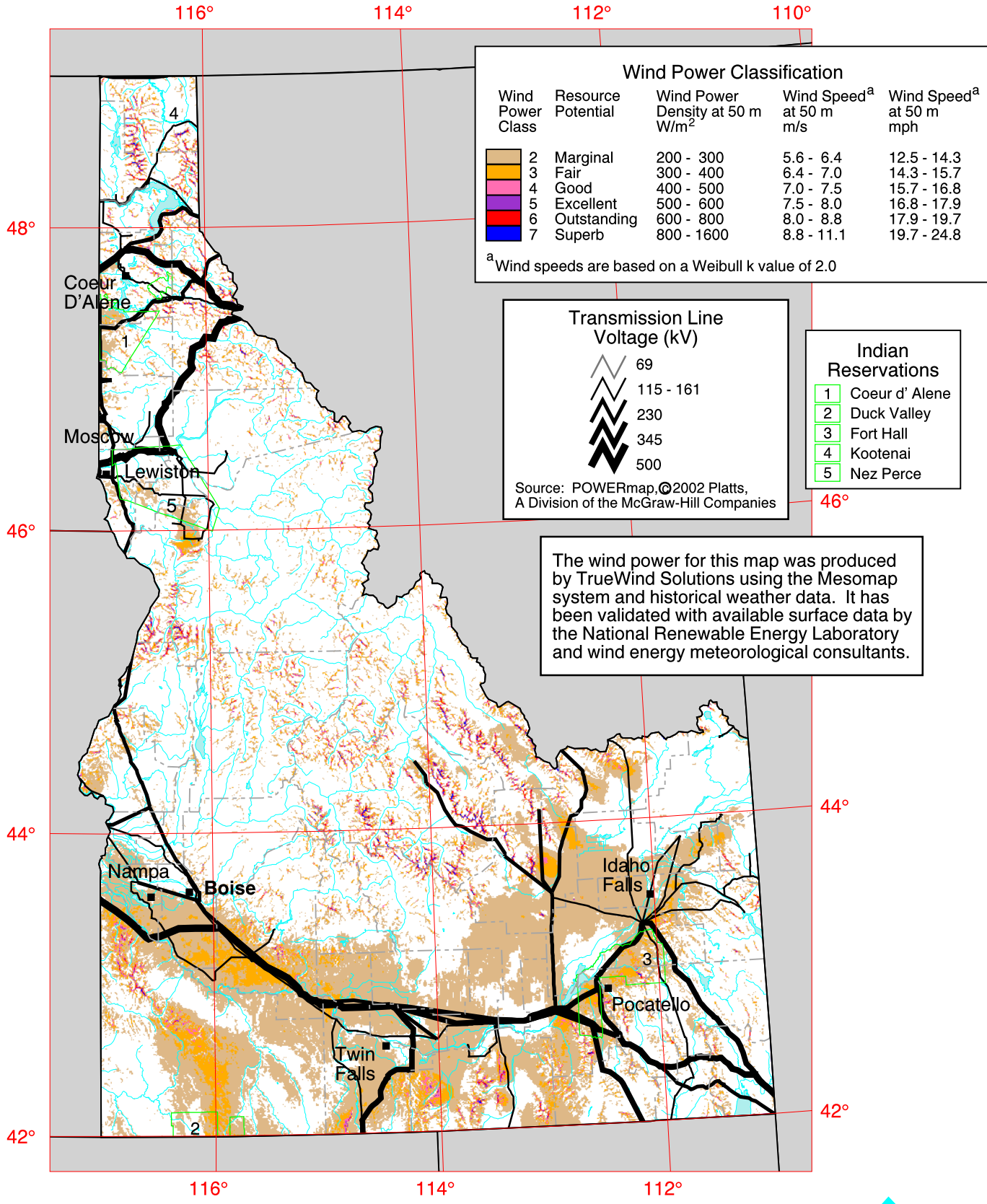


Idaho - Wind Resource Map



Wind Power Class	Resource Potential	Wind Power Density at 50 m W/m ²	Wind Speed ^a at 50 m m/s	Wind Speed ^a at 50 m mph
2	Marginal	200 - 300	5.6 - 6.4	12.5 - 14.3
3	Fair	300 - 400	6.4 - 7.0	14.3 - 15.7
4	Good	400 - 500	7.0 - 7.5	15.7 - 16.8
5	Excellent	500 - 600	7.5 - 8.0	16.8 - 17.9
6	Outstanding	600 - 800	8.0 - 8.8	17.9 - 19.7
7	Superb	800 - 1600	8.8 - 11.1	19.7 - 24.8

^a Wind speeds are based on a Weibull k value of 2.0

	69
	115 - 161
	230
	345
	500

Source: POWERmap, ©2002 Platts, A Division of the McGraw-Hill Companies

1	Coeur d'Alene
2	Duck Valley
3	Fort Hall
4	Kootenai
5	Nez Perce

The wind power for this map was produced by TrueWind Solutions using the Mesomap system and historical weather data. It has been validated with available surface data by the National Renewable Energy Laboratory and wind energy meteorological consultants.

