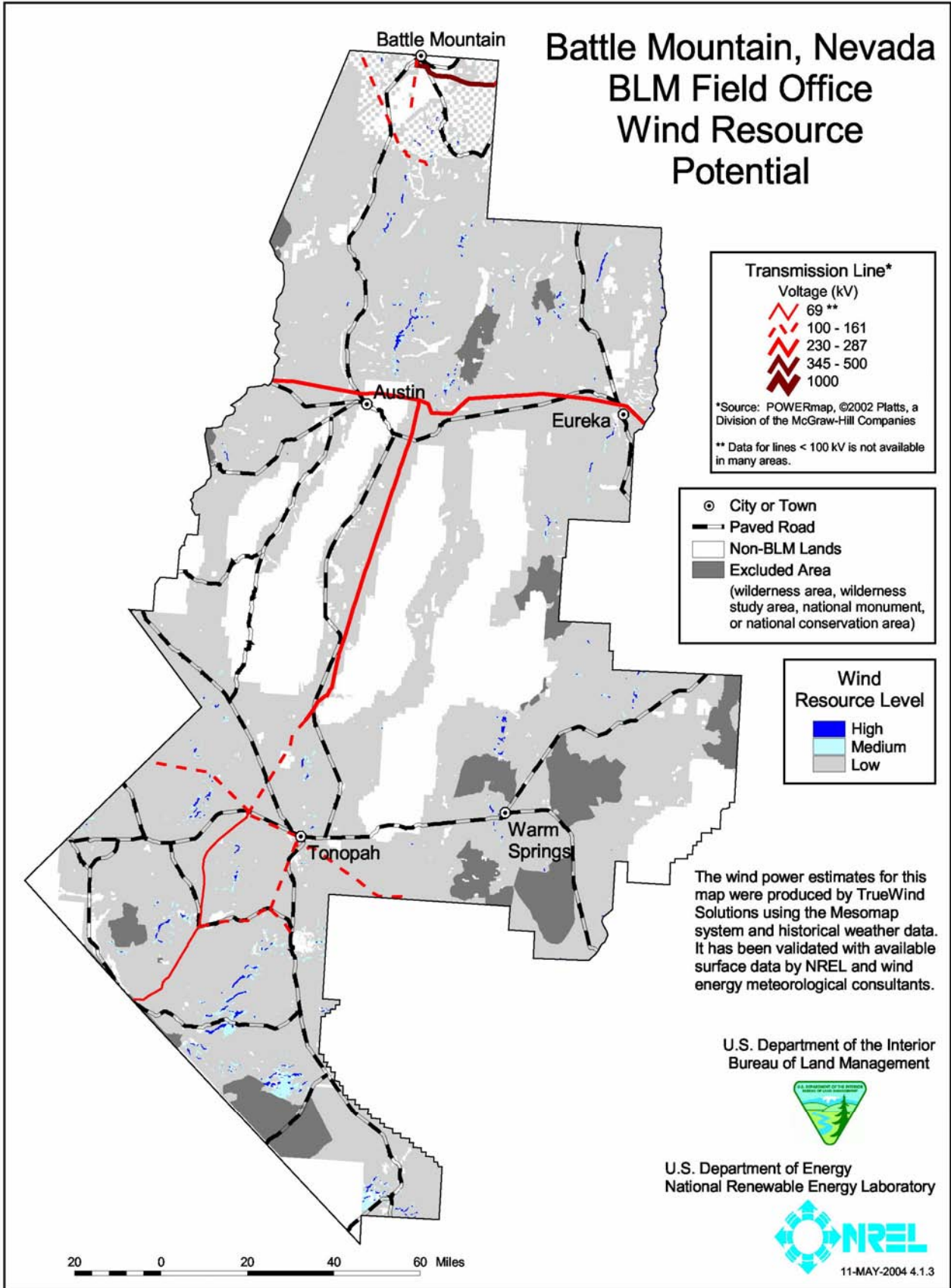
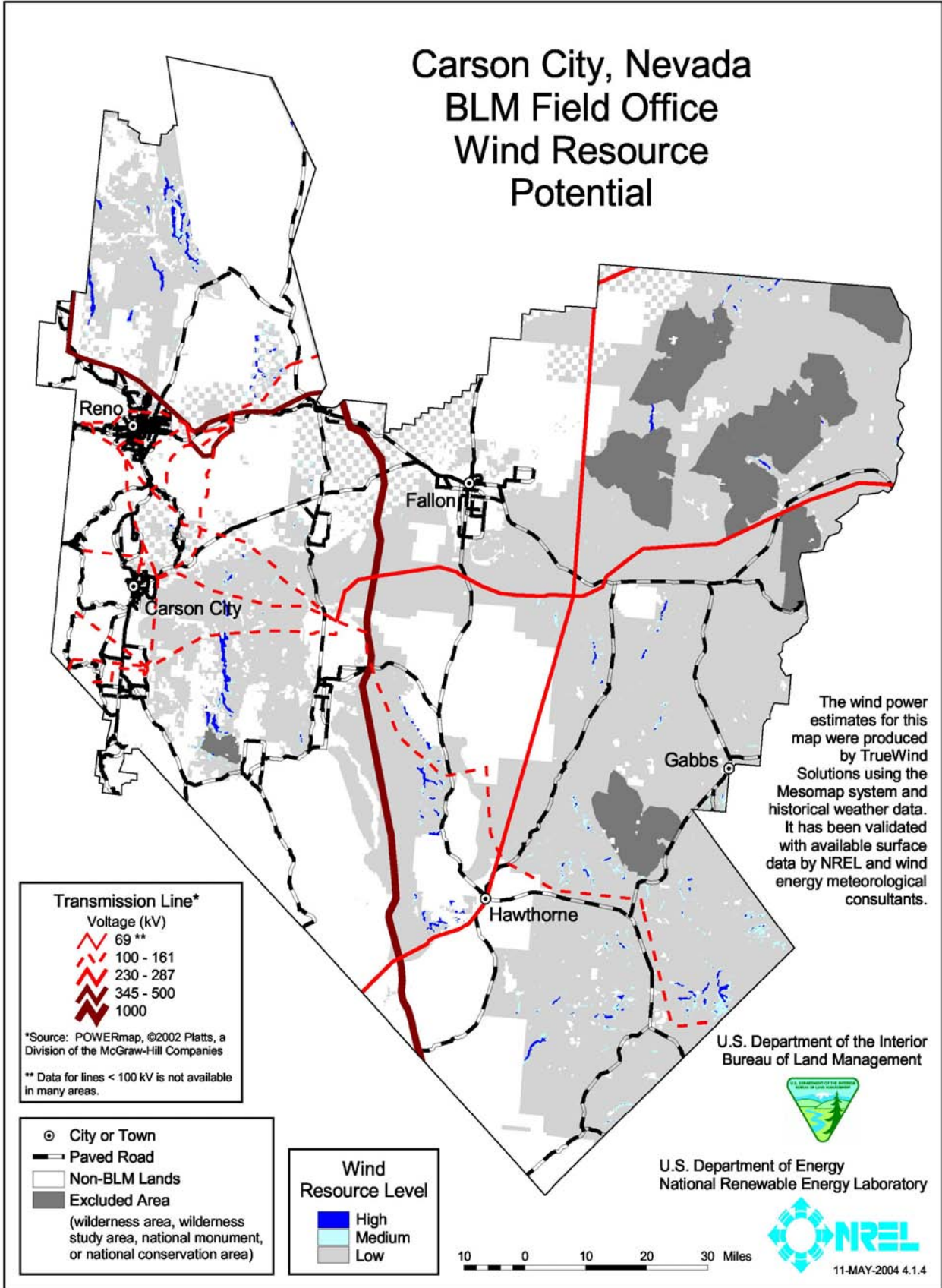


FIGURE B-8 Index Map Showing Locations of Field Office Boundaries in Nevada

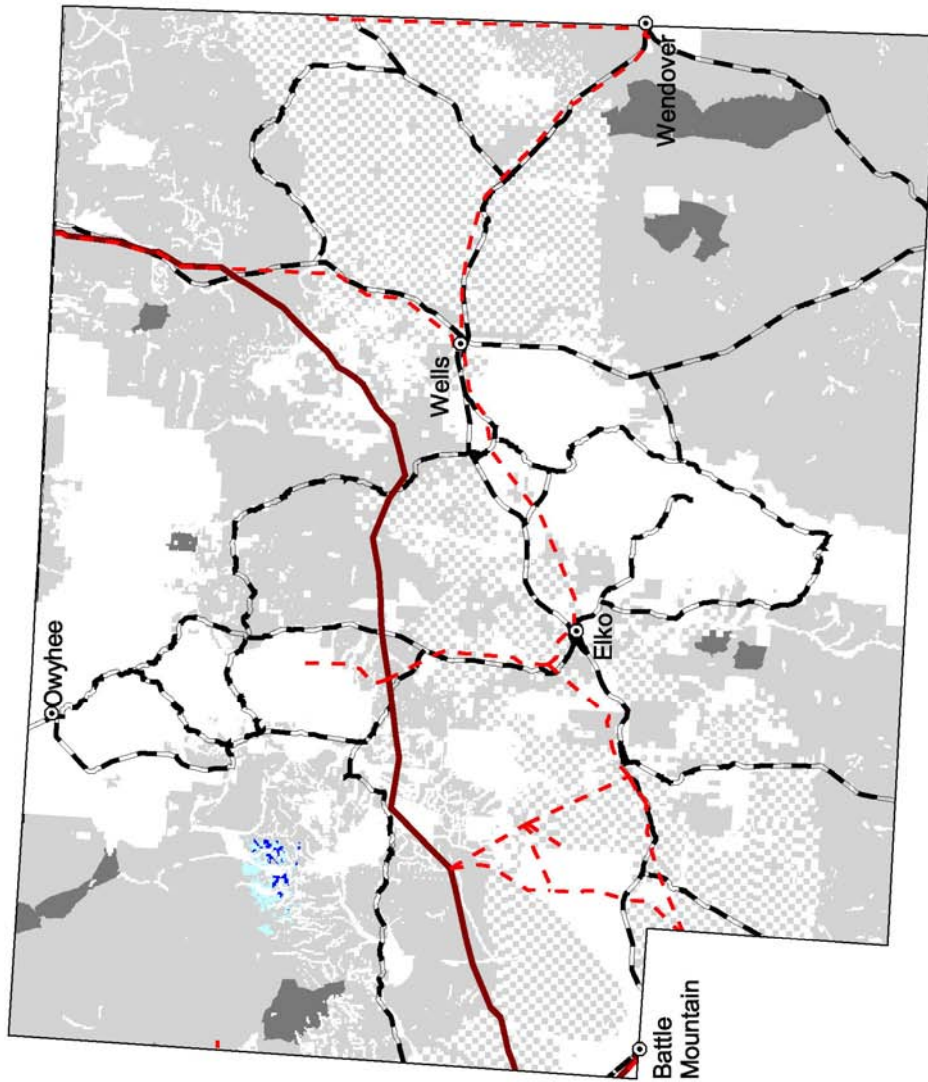
Battle Mountain, Nevada BLM Field Office Wind Resource Potential



Carson City, Nevada BLM Field Office Wind Resource Potential



Elko, Nevada BLM Field Office Wind Resource Potential



Wind Resource Level

High	Medium	Low

Transmission Line*

Voltage (kV)

	69**
	100 - 161
	230 - 287
	345 - 500
	1000

*Source: POWERmap, ©2002 Platts, a Division of the McGraw-Hill Companies

** Data for lines < 100 kV is not available in many areas.

City or Town

Paved Road

Non-BLM Lands

Excluded Area
(wilderness area, wilderness study area, national monument, or national conservation area)

U.S. Department of the Interior
Bureau of Land Management



U.S. Department of Energy
National Renewable Energy Laboratory



11-MAY-2004 4.1.1

The wind power estimates for this map were produced by TrueWind Solutions using the Mesomap system and historical weather data. It has been validated with available surface data by NREL and wind energy meteorological consultants.