

The wind power estimates for this map were produced by TrueWind Solutions using the Mesomap system and historical weather data. It has been validated with available surface data by NREL and wind energy meteorological consultants.

\*Source: POWERmap, ©2003 Platt's, a Division of the McGraw-Hill Companies.  
\*\* Data for lines < 100 kV is not available in many areas.

# Malta, Montana BLM Field Office Wind Resource Potential

**Transmission Line\*  
Voltage (kV)**

- 69 \*\*
- 100 - 161
- 230 - 287
- 345 - 500
- 1000

\*Source: POWERmap, ©2003 Platts, a Division of the McGraw-Hill Companies.  
\*\* Data for lines < 100 kV is not available in many areas.

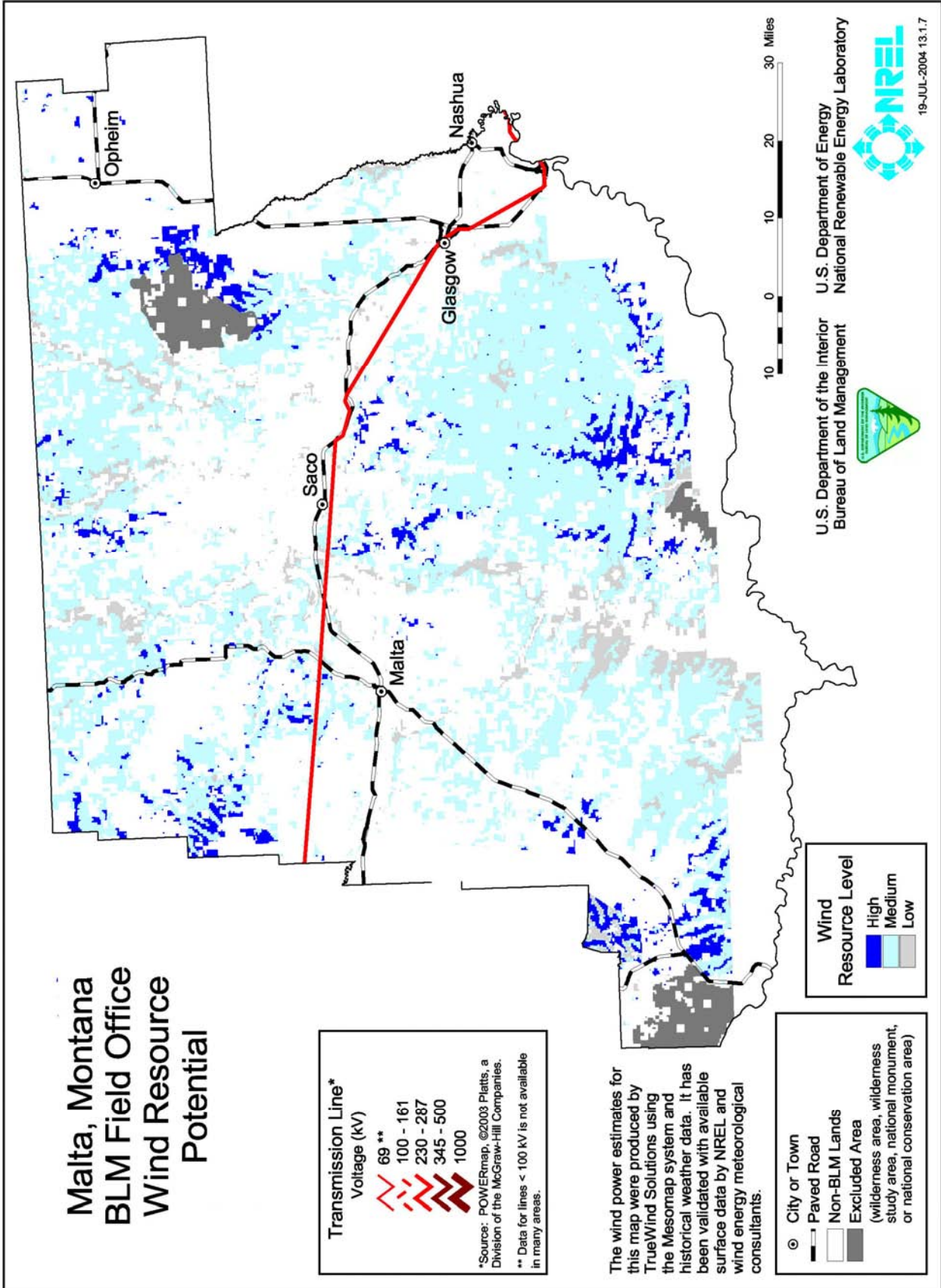
The wind power estimates for this map were produced by TrueWind Solutions using the Mesomap system and historical weather data. It has been validated with available surface data by NREL and wind energy meteorological consultants.

**City or Town**

- City or Town
- ▬ Paved Road
- Non-BLM Lands
- Excluded Area (wilderness area, wilderness study area, national monument, or national conservation area)

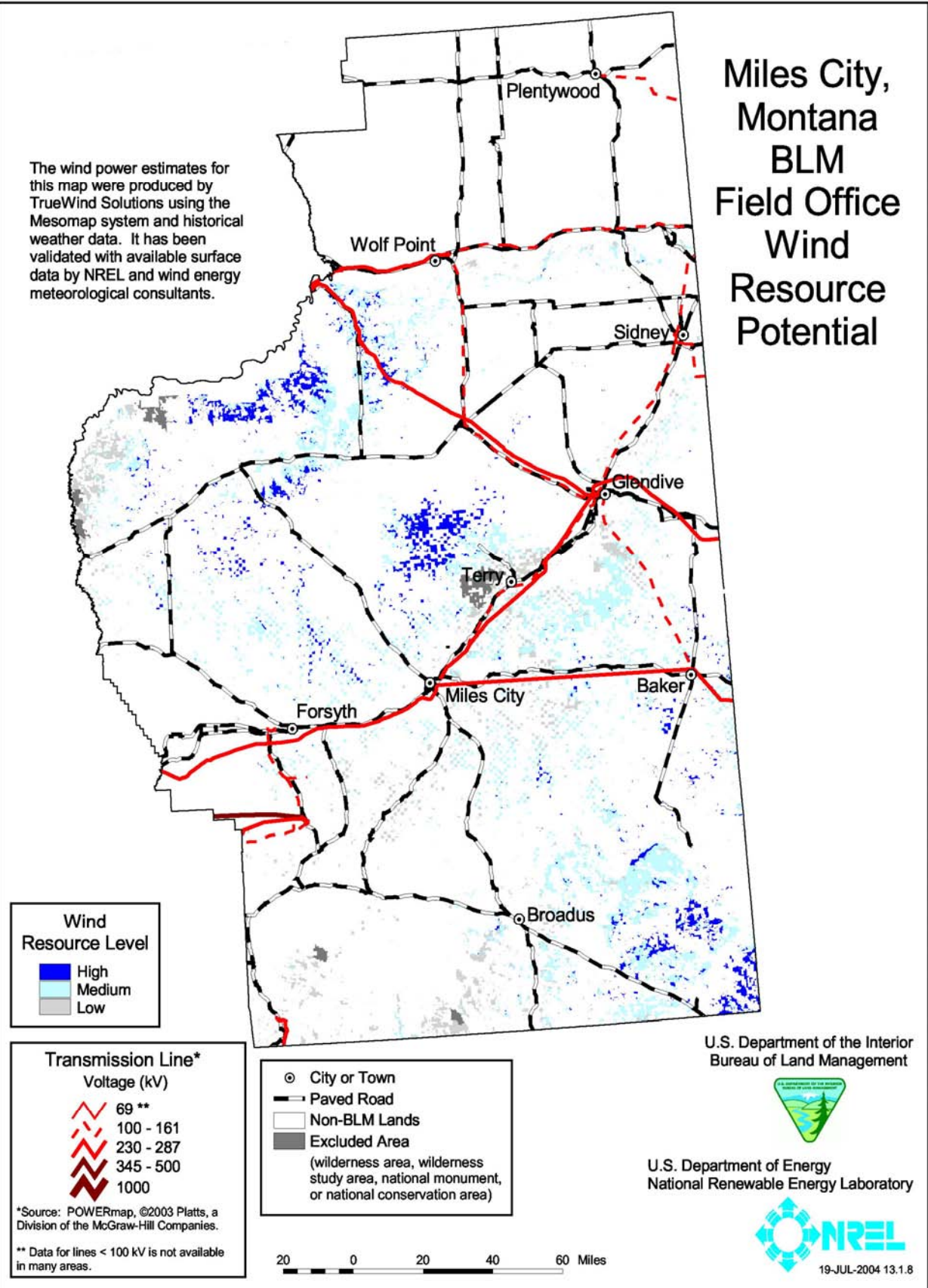
**Wind Resource Level**

- High
- Medium
- Low

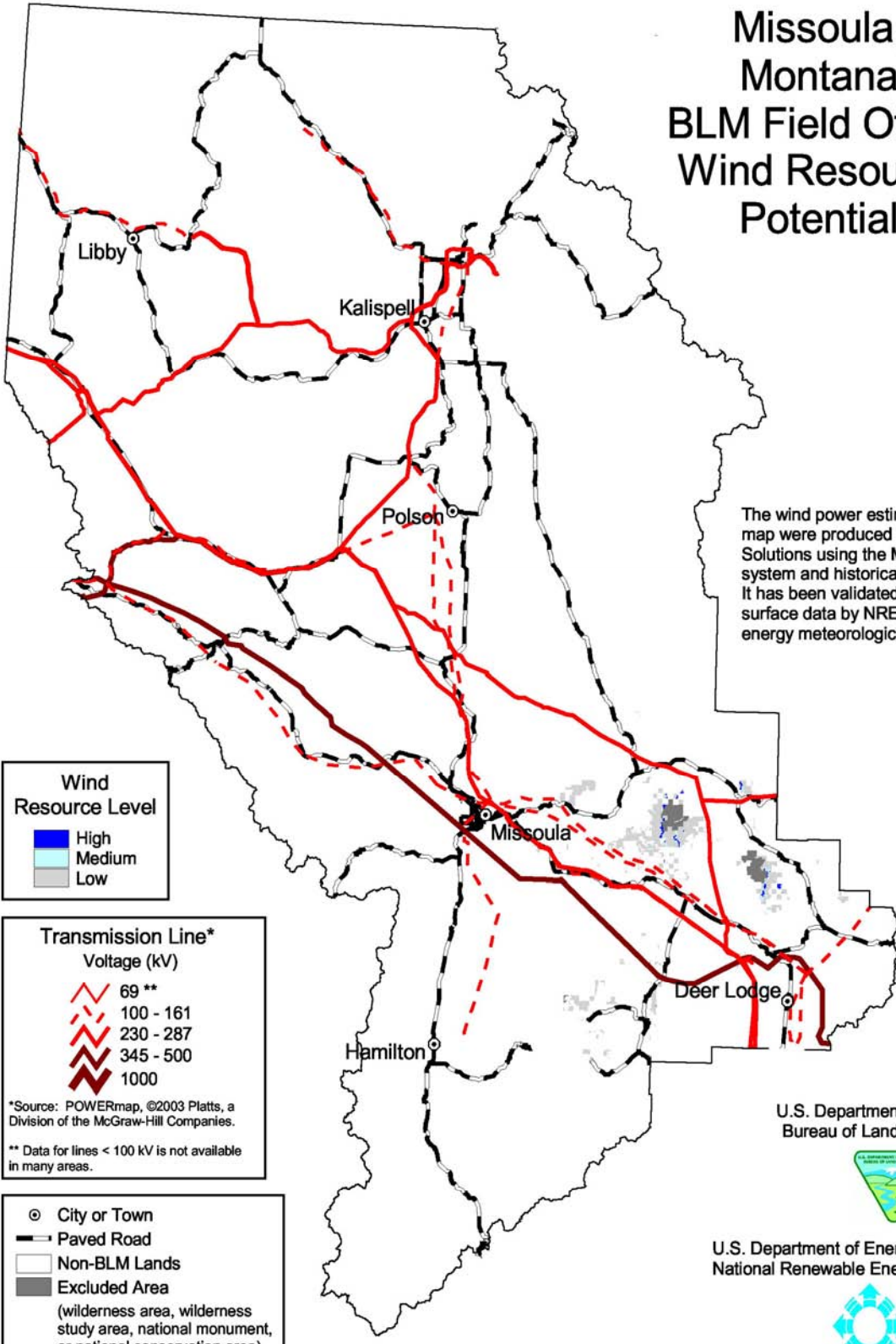


# Miles City, Montana BLM Field Office Wind Resource Potential

The wind power estimates for this map were produced by TrueWind Solutions using the Mesomap system and historical weather data. It has been validated with available surface data by NREL and wind energy meteorological consultants.



# Missoula, Montana BLM Field Office Wind Resource Potential



The wind power estimates for this map were produced by TrueWind Solutions using the Mesomap system and historical weather data. It has been validated with available surface data by NREL and wind energy meteorological consultants.

**Wind Resource Level**

- High
- Medium
- Low

**Transmission Line\***  
Voltage (kV)

- 69 \*\*
- 100 - 161
- 230 - 287
- 345 - 500
- 1000

\*Source: POWERmap, ©2003 Platts, a Division of the McGraw-Hill Companies.  
\*\* Data for lines < 100 kV is not available in many areas.

- City or Town
- Paved Road
- Non-BLM Lands
- Excluded Area  
(wilderness area, wilderness study area, national monument, or national conservation area)

U.S. Department of the Interior  
Bureau of Land Management



U.S. Department of Energy  
National Renewable Energy Laboratory



19-JUL-2004 13.1.1

