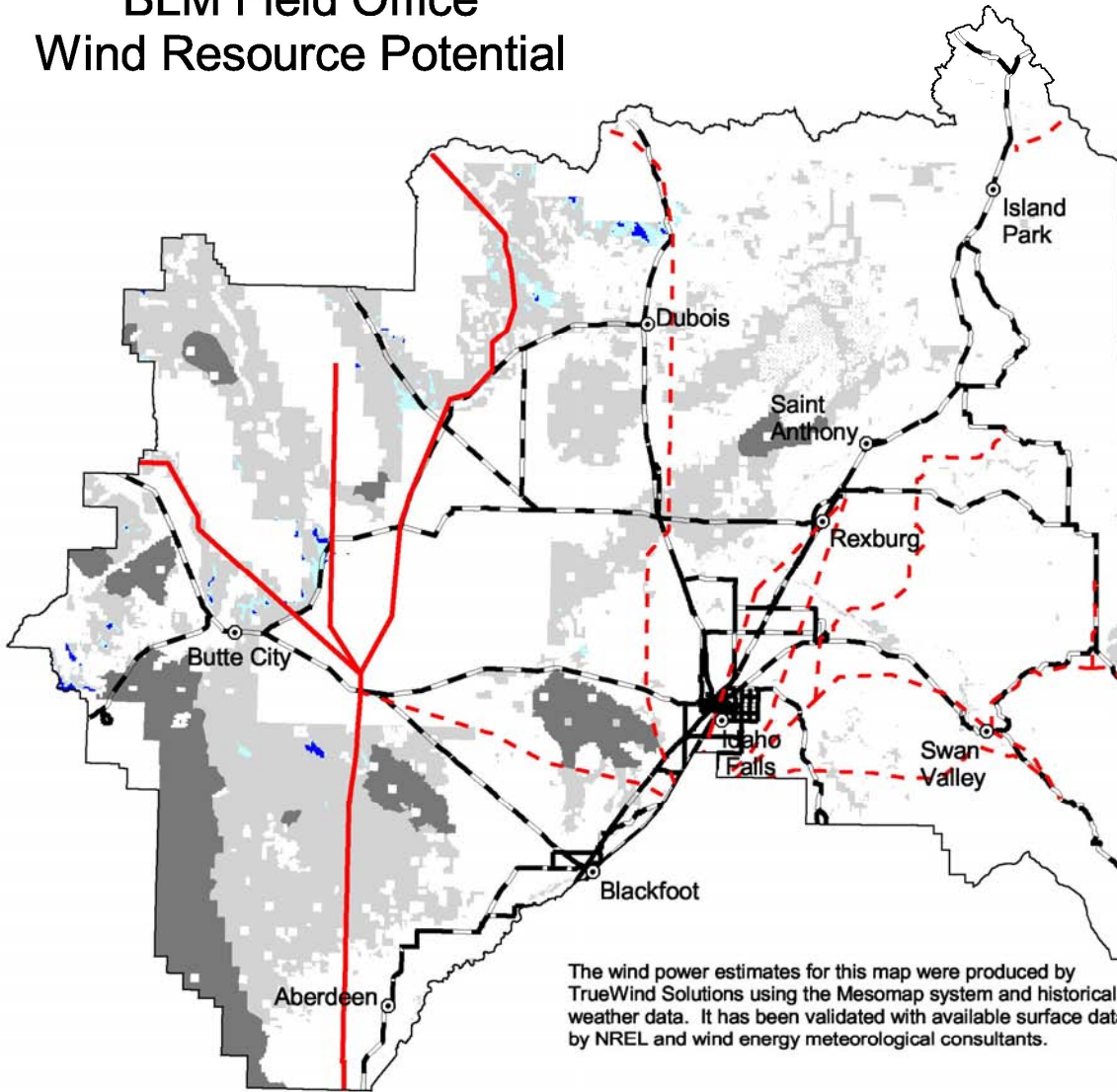




Idaho Falls, Idaho BLM Field Office Wind Resource Potential



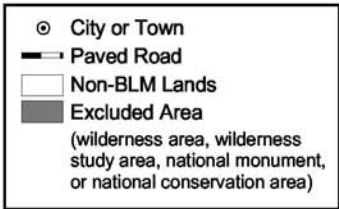
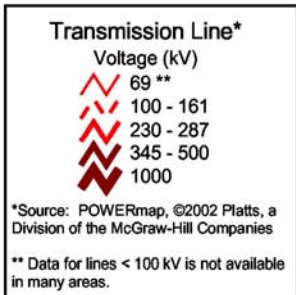
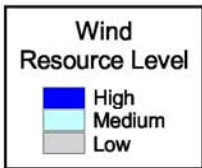
The wind power estimates for this map were produced by TrueWind Solutions using the Mesomap system and historical weather data. It has been validated with available surface data by NREL and wind energy meteorological consultants.

10 0 10 20 30 40 Miles

<ul style="list-style-type: none"> ⊙ City or Town — Paved Road □ Non-BLM Lands ■ Excluded Area (wilderness area, wilderness study area, national monument, or national conservation area) 	<p>Transmission Line*</p> <p>Voltage (kV)</p> <ul style="list-style-type: none"> 69 ** 100 - 161 230 - 287 345 - 500 1000 <p><small>*Source: POWERmap, ©2002 Platts, a Division of the McGraw-Hill Companies</small></p> <p><small>** Data for lines < 100 kV is not available in many areas.</small></p>	<p>Wind Resource Level</p> <ul style="list-style-type: none"> High Medium Low 	<p>U.S. Department of the Interior Bureau of Land Management</p>  <p>U.S. Department of Energy National Renewable Energy Laboratory</p>  <p>19-JUL-2004 12.1.9</p>
---	---	--	--

Jarbridge, Idaho BLM Field Office Wind Resource Potential

The wind power estimates for this map were produced by TrueWind Solutions using the Mesomap system and historical weather data. It has been validated with available surface data by NREL and wind energy meteorological consultants.



U.S. Department of the Interior
Bureau of Land Management



U.S. Department of Energy
National Renewable Energy Laboratory



17-JUL-2004 11.1.6

