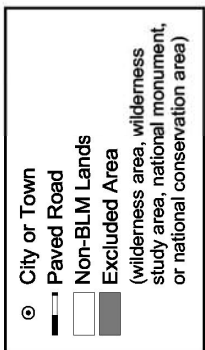
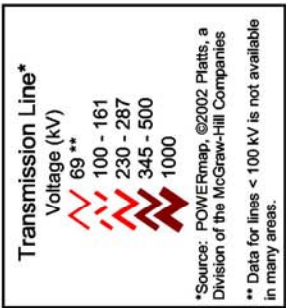
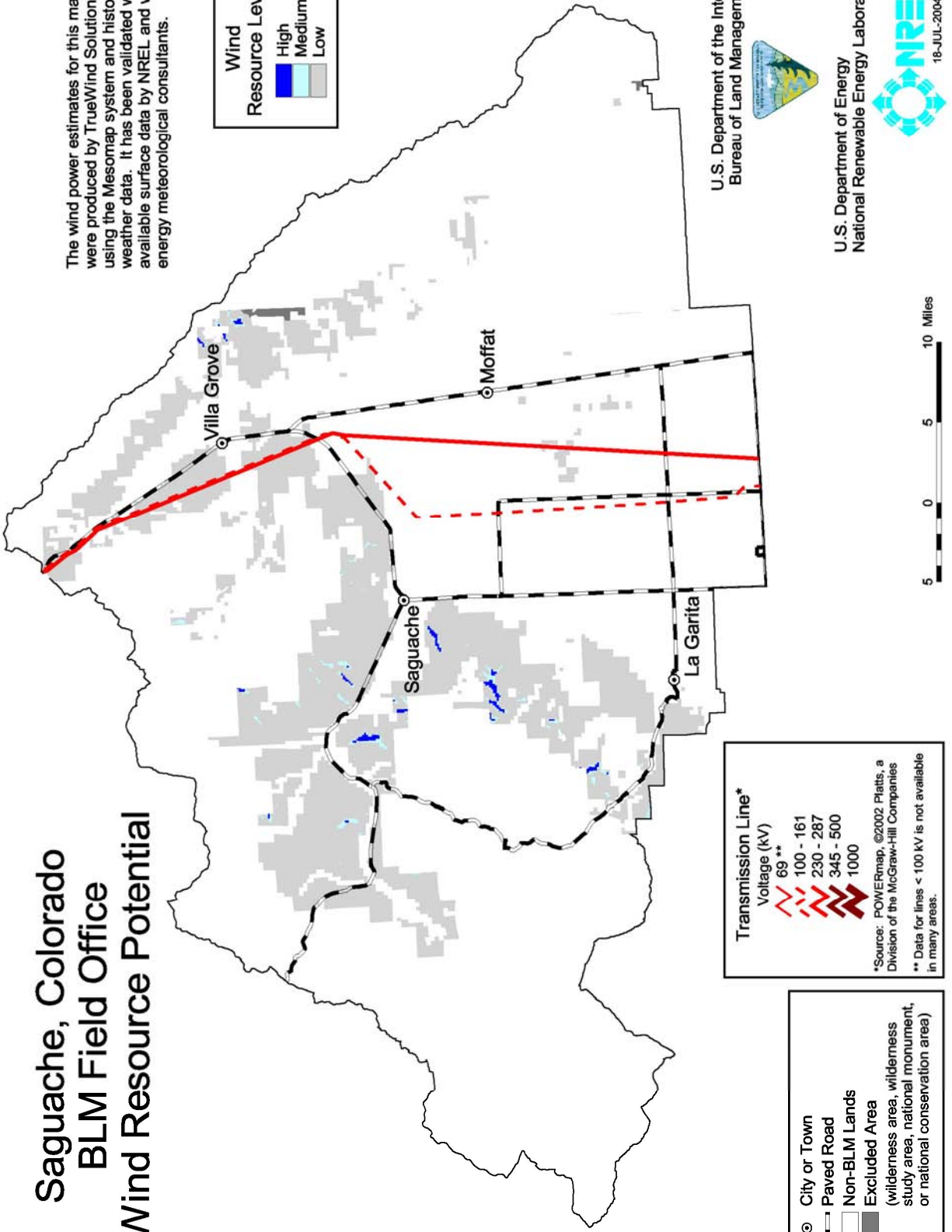
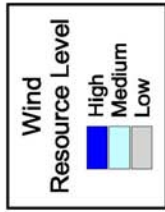


# Saguache, Colorado BLM Field Office Wind Resource Potential

The wind power estimates for this map were produced by TrueWind Solutions using the Mesomap system and historical weather data. It has been validated with available surface data by NREL and wind energy meteorological consultants.



U.S. Department of the Interior  
Bureau of Land Management



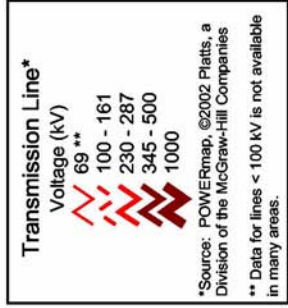
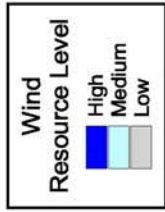
U.S. Department of Energy  
National Renewable Energy Laboratory



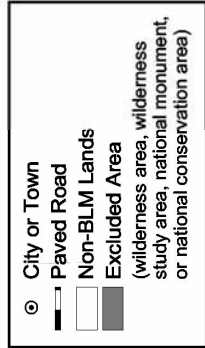
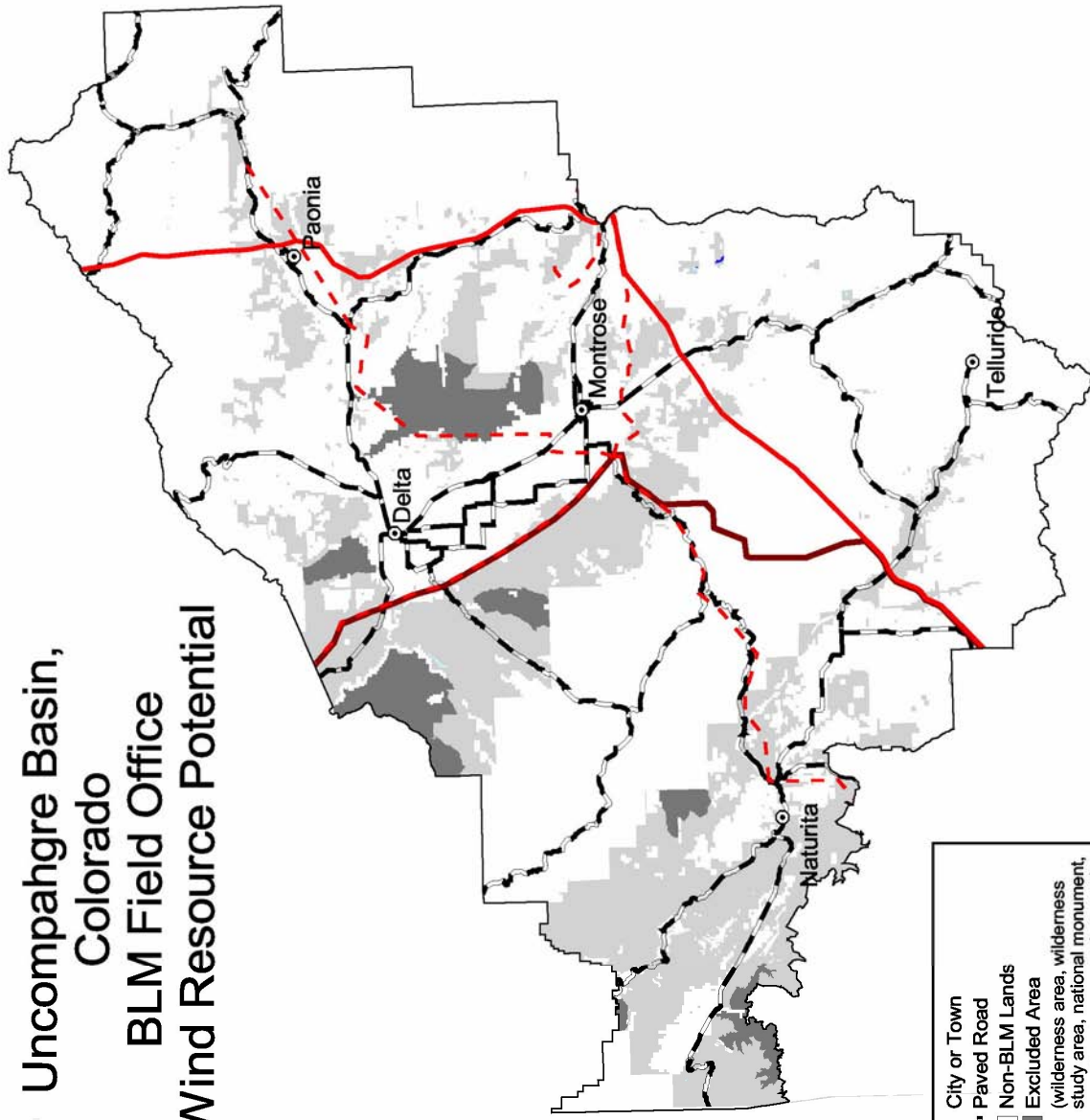
18-JUL-2004 9.1.8

# Uncompahgre Basin, Colorado BLM Field Office Wind Resource Potential

The wind power estimates for this map were produced by TrueWind Solutions using the Mesomap system and historical weather data. It has been validated with available surface data by NREL and wind energy meteorological consultants.



\*Source: POWERmap, ©2002 Platts, a Division of the McGraw-Hill Companies  
 \*\* Data for lines < 100 kV is not available in many areas.



U.S. Department of the Interior  
Bureau of Land Management



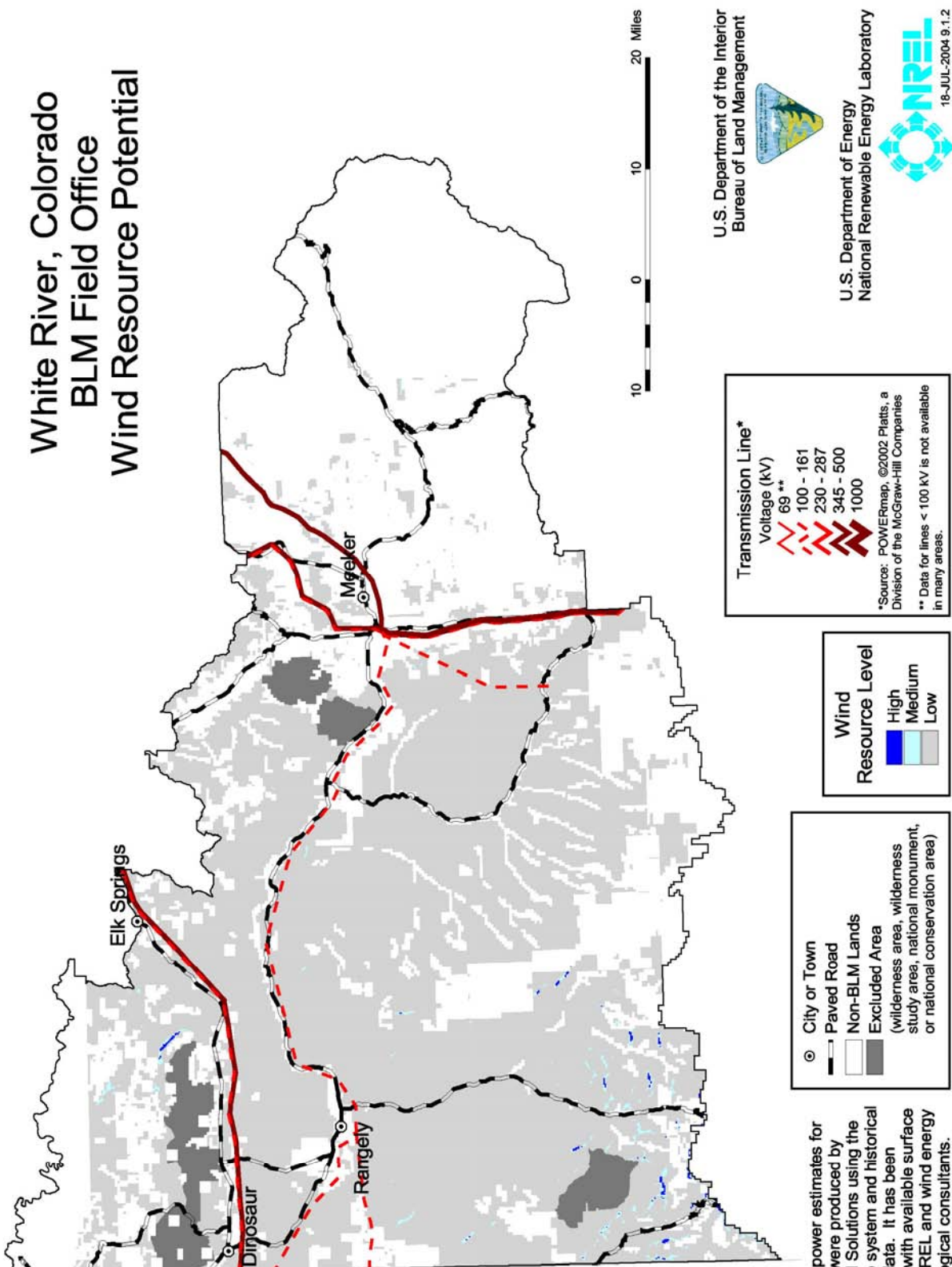
U.S. Department of Energy  
National Renewable Energy Laboratory



18-JUL-2004 9.1.5



# White River, Colorado BLM Field Office Wind Resource Potential



The wind power estimates for this map were produced by TrueWind Solutions using the Mesomap system and historical weather data. It has been validated with available surface data by NREL and wind energy meteorological consultants.

City or Town  
 Paved Road  
 Non-BLM Lands  
 Excluded Area  
 (wilderness area, wilderness study area, national monument, or national conservation area)

**Wind Resource Level**  
 High  
 Medium  
 Low

**Transmission Line\***  
 Voltage (kV)  
 69 \*\*  
 100 - 161  
 230 - 287  
 345 - 500  
 1000

\*Source: POWERmap, ©2002 Platts, a Division of the McGraw-Hill Companies  
 \*\* Data for lines < 100 kV is not available in many areas.



U.S. Department of the Interior  
 Bureau of Land Management

U.S. Department of Energy  
 National Renewable Energy Laboratory

NREL  
 18-JUL-2004 9.1.2

