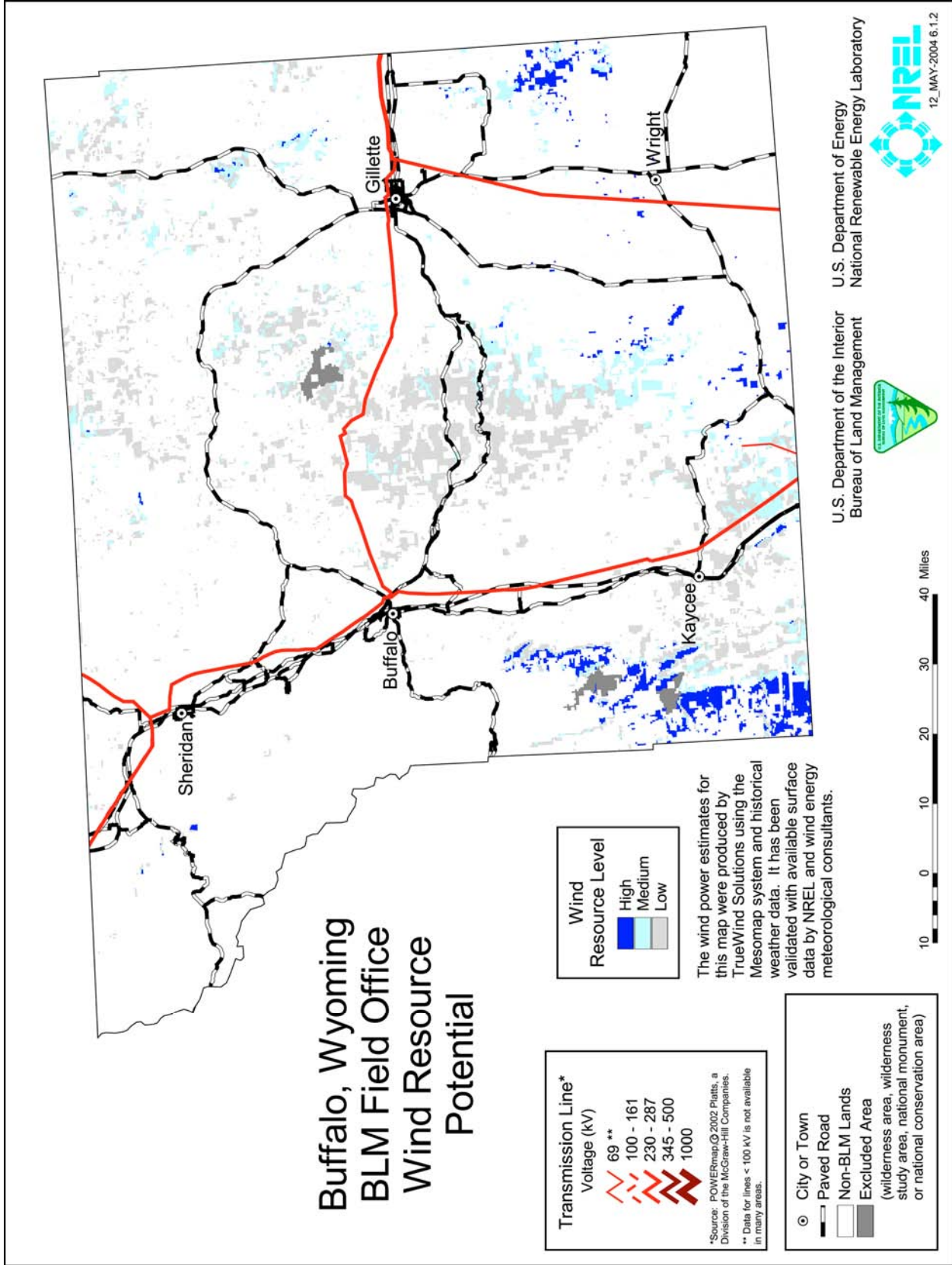
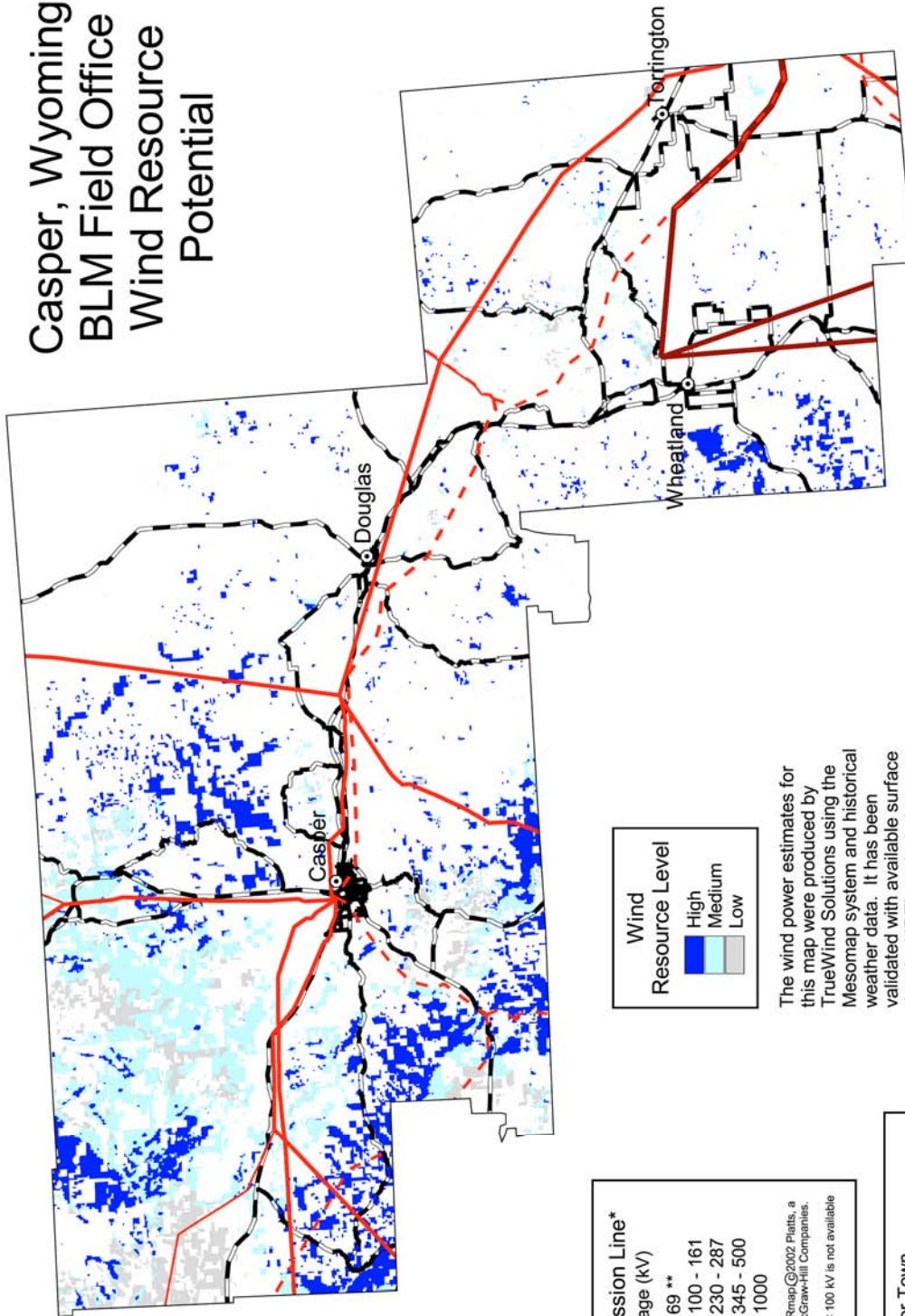


FIGURE B-13 Index Map Showing Locations of Field Office Boundaries in Wyoming



# Casper, Wyoming BLM Field Office Wind Resource Potential



**Wind Resource Level**

High	Medium	Low
------	--------	-----

The wind power estimates for this map were produced by TrueWind Solutions using the Mesomap system and historical weather data. It has been validated with available surface data by NREL and wind energy meteorological consultants.

**Transmission Line\*  
Voltage (kV)**

69 **
100 - 161
230 - 287
345 - 500
1000

\*Source: POWERmap©2002 Platts, a Division of the McGraw-Hill Companies.  
\*\* Data for lines < 100 kV is not available in many areas.

**City or Town**

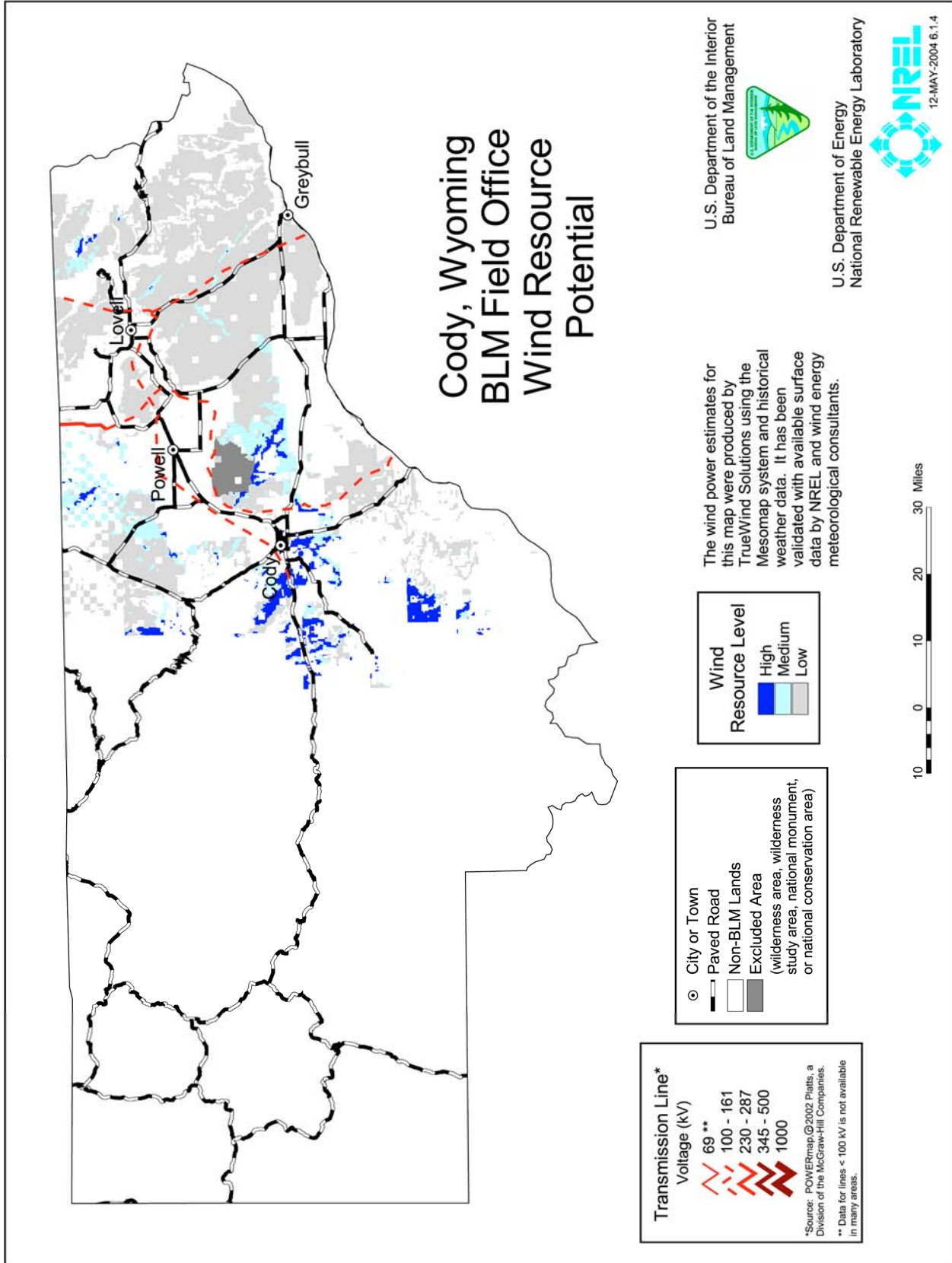
- Paved Road
- Non-BLM Lands
- Excluded Area (wilderness area, wilderness study area, national monument, or national conservation area)



U.S. Department of the Interior  
Bureau of Land Management

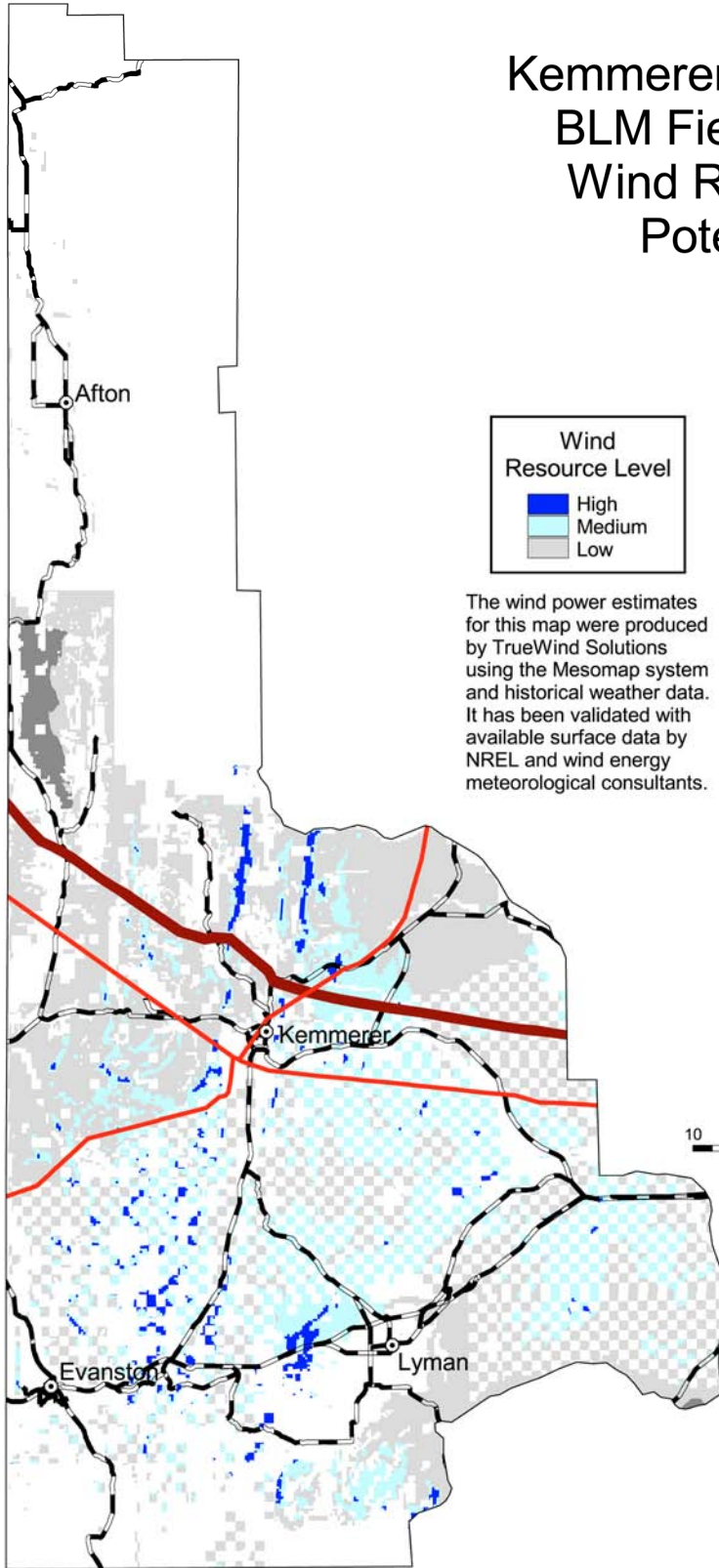
U.S. Department of Energy  
National Renewable Energy Laboratory







# Kemmerer, Wyoming BLM Field Office Wind Resource Potential



**Wind Resource Level**

- High
- Medium
- Low

○ City or Town  
— Paved Road  
□ Non-BLM Lands  
■ Excluded Area  
(wilderness area, wilderness study area, national monument, or national conservation area)

The wind power estimates for this map were produced by TrueWind Solutions using the Mesomap system and historical weather data. It has been validated with available surface data by NREL and wind energy meteorological consultants.

**Transmission Line\***  
Voltage (kV)

- 69 \*\*
- 100 - 161
- 230 - 287
- 345 - 500
- 1000

\*Source: POWERmap, ©2002 Platts, a Division of the McGraw-Hill Companies.  
\*\* Data for lines < 100 kV is not available in many areas.



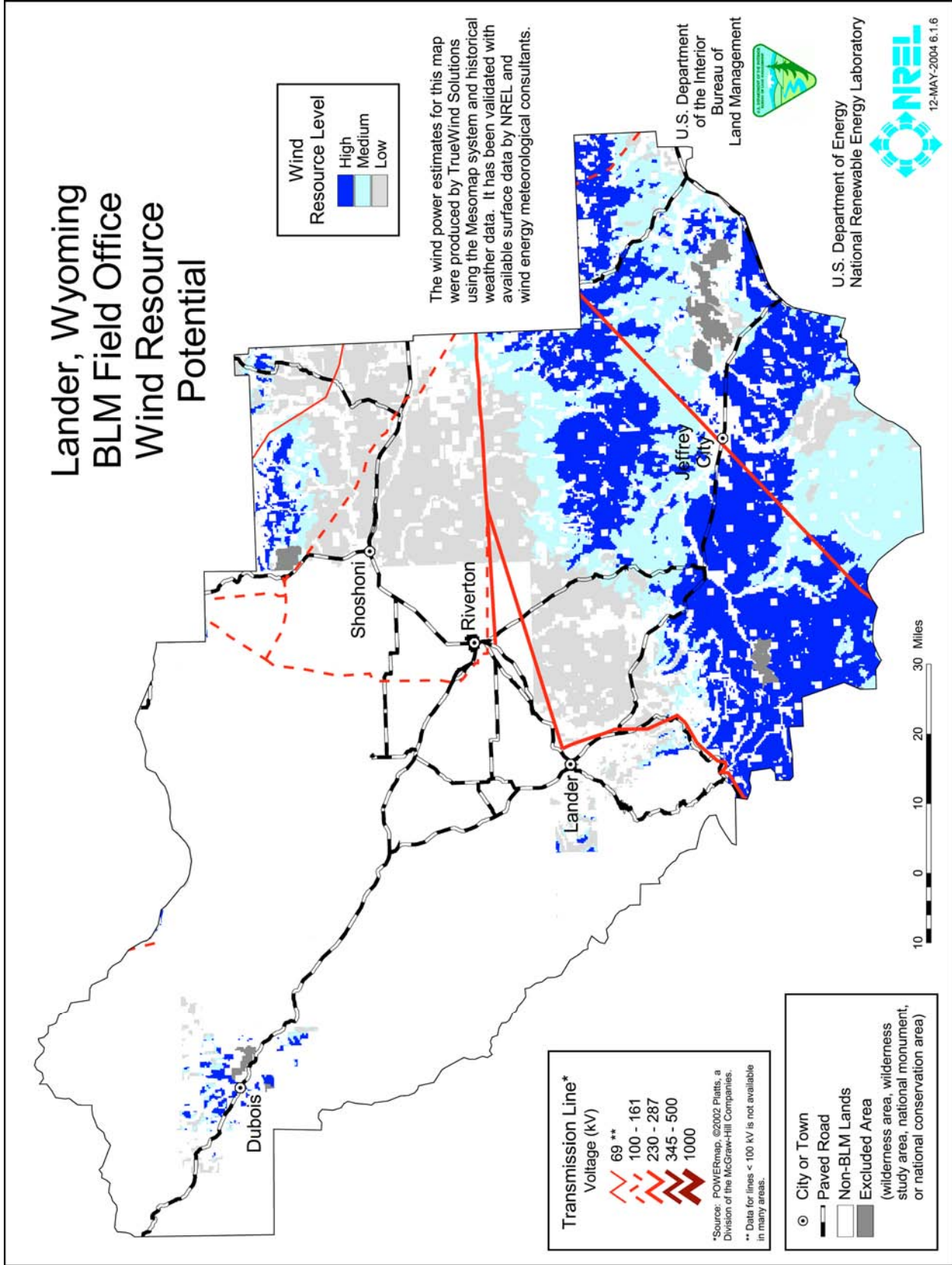
U.S. Department of the Interior  
Bureau of Land Management



U.S. Department of Energy  
National Renewable Energy Laboratory



# Lander, Wyoming BLM Field Office Wind Resource Potential



**Wind Resource Level**

High	Medium	Low

The wind power estimates for this map were produced by TrueWind Solutions using the Mesomap system and historical weather data. It has been validated with available surface data by NREL and wind energy meteorological consultants.

**Transmission Line\***  
Voltage (kV)

	69 **
	100 - 161
	230 - 287
	345 - 500
	1000

\*Source: POWERmap, ©2002 Platts, a Division of the McGraw-Hill Companies.  
\*\* Data for lines < 100 kV is not available in many areas.

	City or Town
	Paved Road
	Non-BLM Lands
	Excluded Area (wilderness area, wilderness study area, national monument, or national conservation area)

U.S. Department of the Interior  
Bureau of Land Management



U.S. Department of Energy  
National Renewable Energy Laboratory



12-MAY-2004 6.1.6