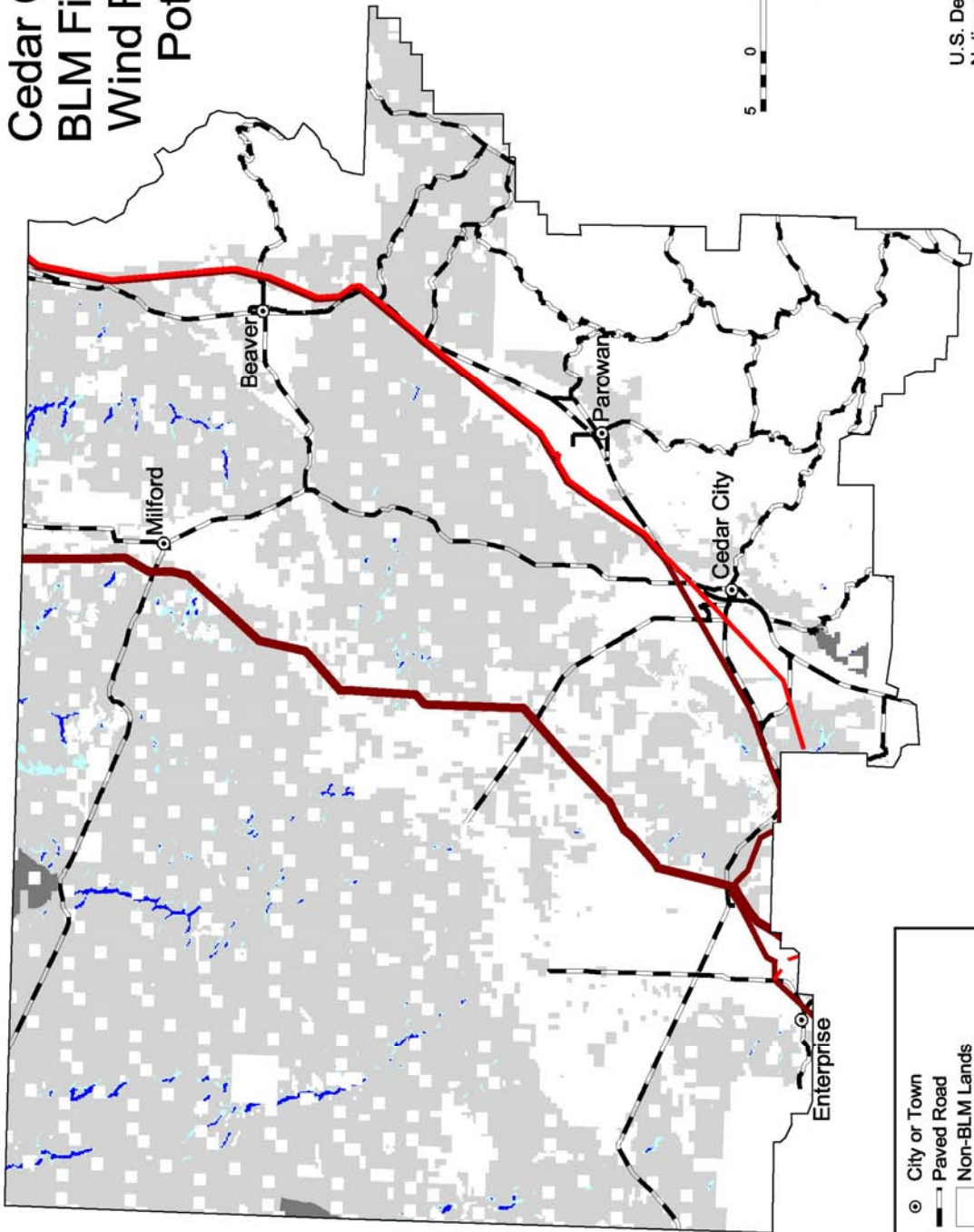


FIGURE B-11 Index Map Showing Locations of Field Office Boundaries in Utah

Cedar City, Utah BLM Field Office Wind Resource Potential



Wind Resource Level

High	Medium	Low
------	--------	-----

**Transmission Line*
Voltage (kV)**

69 **
100 - 161
230 - 287
345 - 500
1000

*Source: POWERmap, ©2002 Plattis, a Division of the McGraw-Hill Companies.
** Data for lines < 100 kV is not available in many areas.



U.S. Department of the Interior
Bureau of Land Management



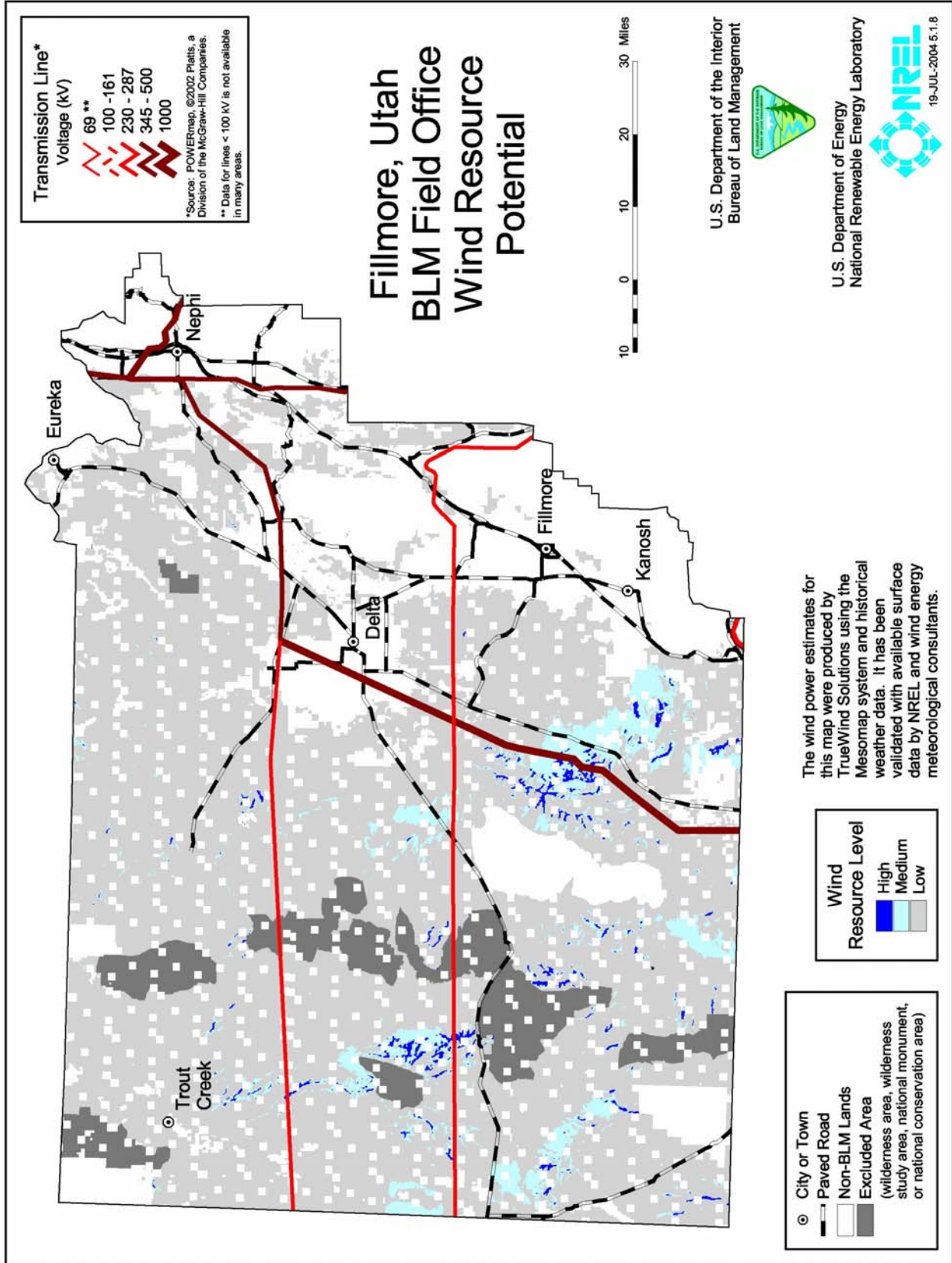
U.S. Department of Energy
National Renewable Energy Laboratory

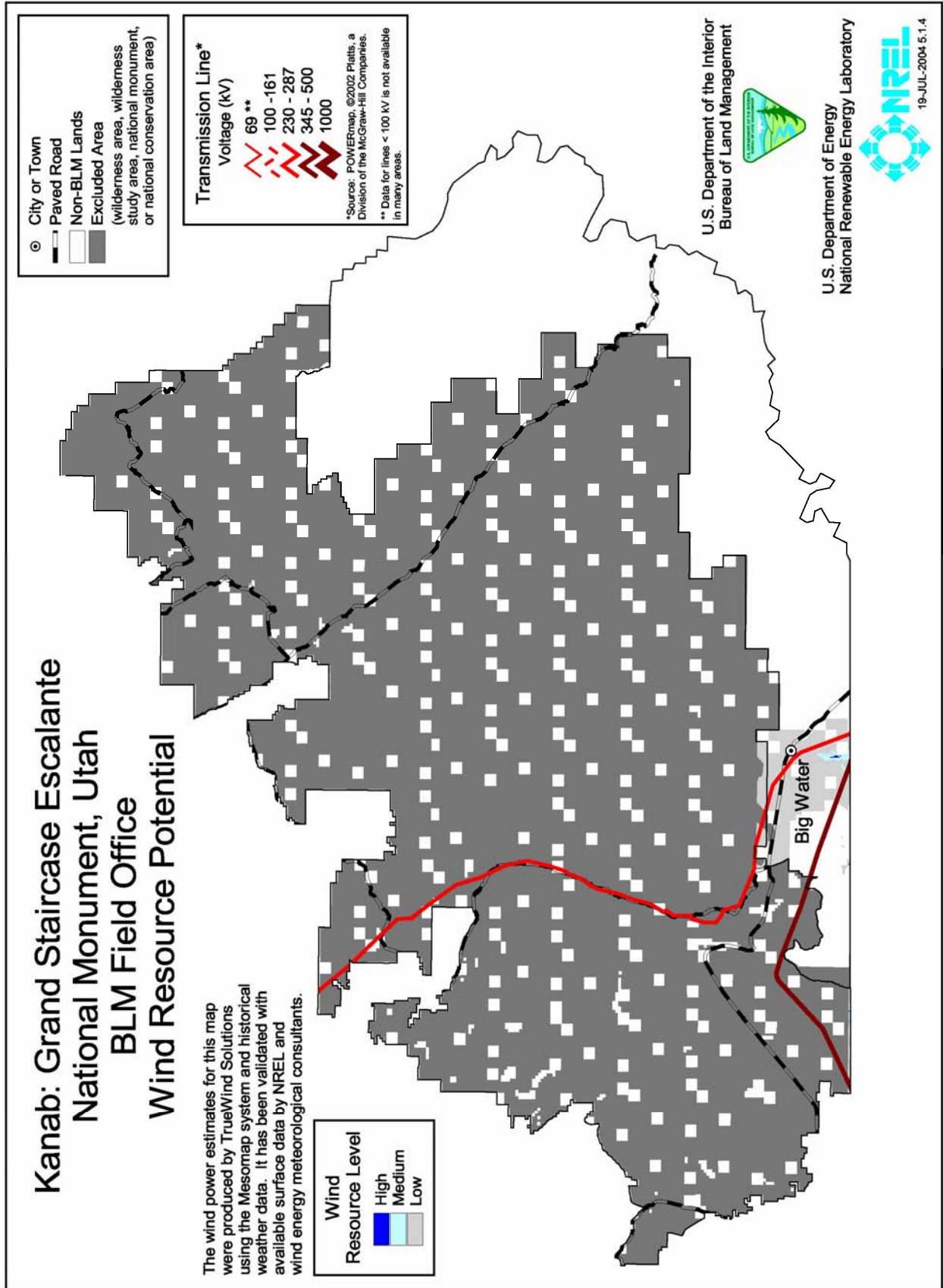


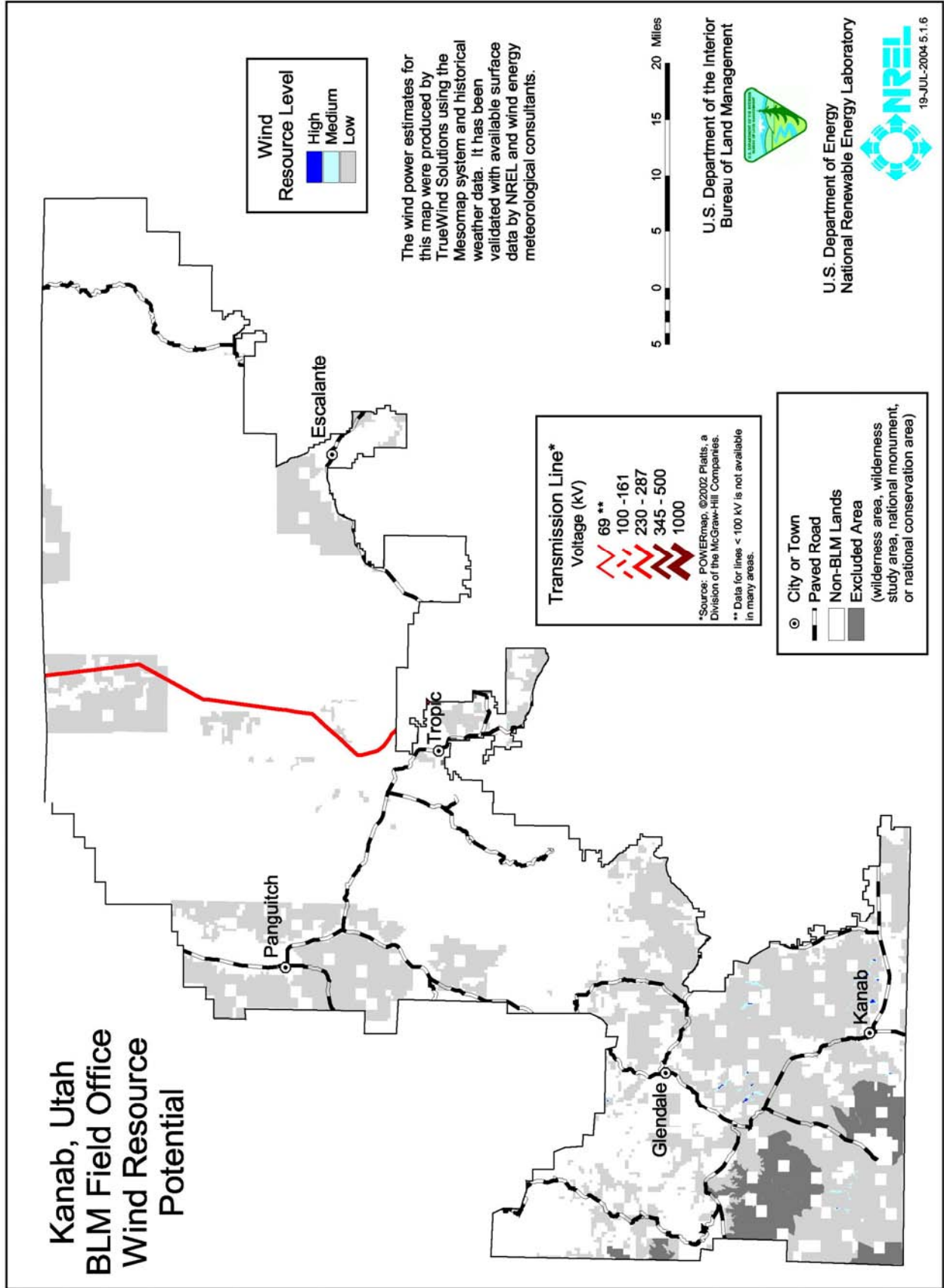
19-JUL-2004 5.1.5

○ City or Town
 — Paved Road
 □ Non-BLM Lands
 ■ Excluded Area
 (wilderness area, wilderness study area, national monument, or national conservation area)

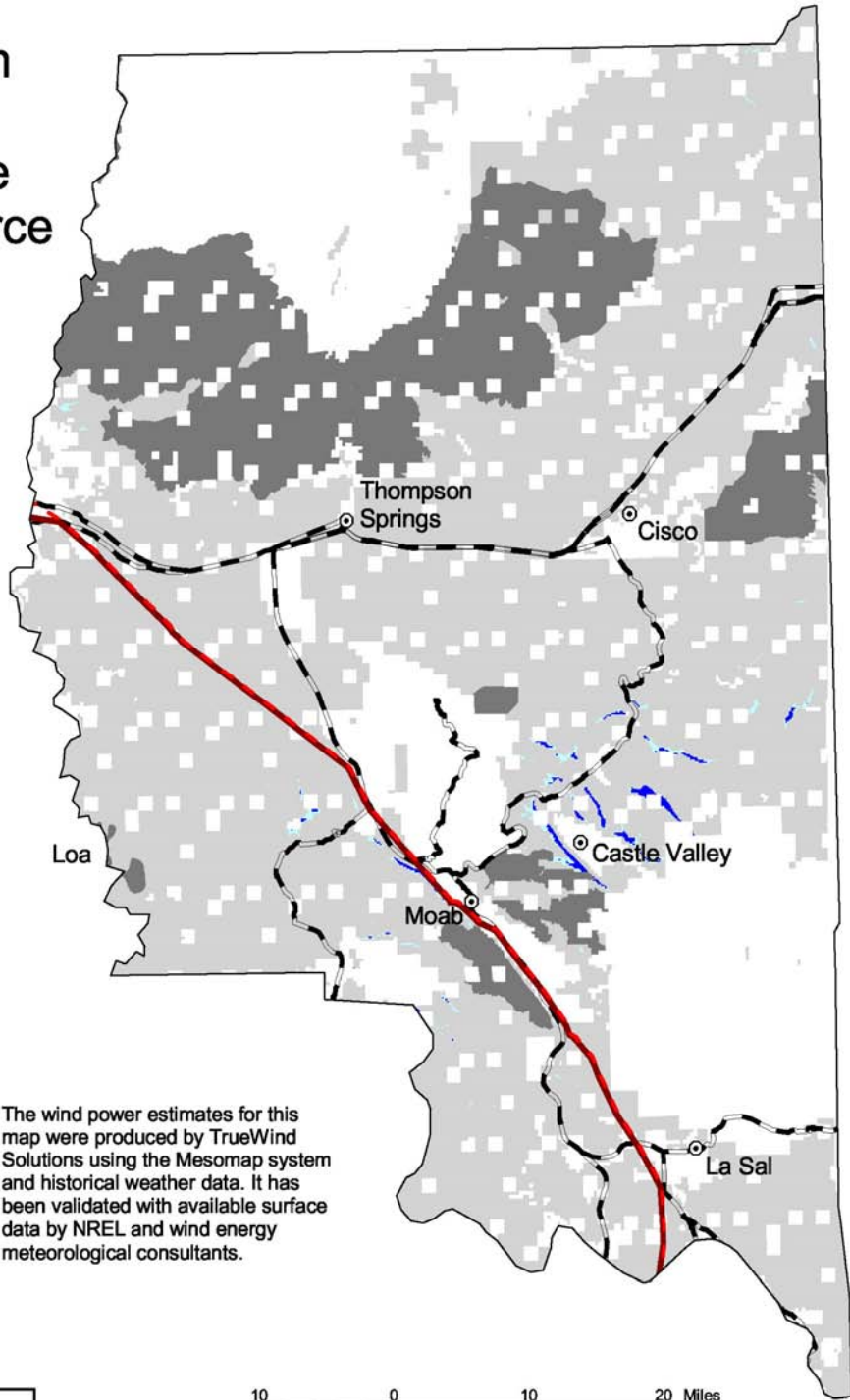
The wind power estimates for this map were produced by TrueWind Solutions using the Mesomap system and historical weather data. It has been validated with available surface data by NREL and wind energy meteorological consultants.







Moab, Utah BLM Field Office Wind Resource Potential



Wind Resource Level

- High
- Medium
- Low

Transmission Line*
Voltage (kV)

- 69 **
- 100 - 161
- 230 - 287
- 345 - 500
- 1000

*Source: POWERmap, ©2002 Platts, a Division of the McGraw-Hill Companies.
** Data for lines < 100 kV is not available in many areas.

The wind power estimates for this map were produced by TrueWind Solutions using the Mesomap system and historical weather data. It has been validated with available surface data by NREL and wind energy meteorological consultants.

- City or Town
- Paved Road
- Non-BLM Lands
- Excluded Area
(wilderness area, wilderness study area, national monument, or national conservation area)



U.S. Department of the Interior Bureau of Land Management U.S. Department of Energy National Renewable Energy Laboratory

