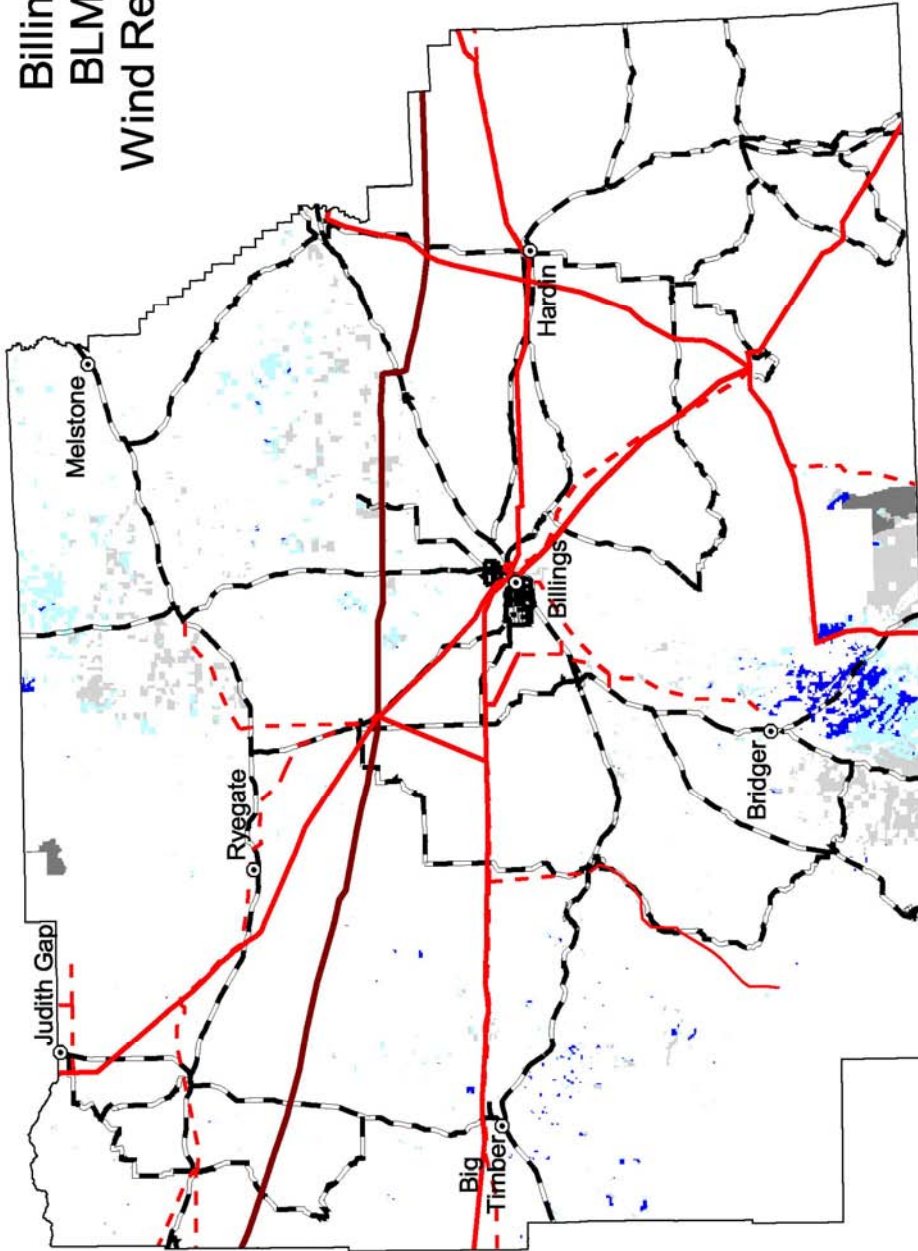


FIGURE B-7 Index Map Showing Locations of Field Office Boundaries in Montana

Billings, Montana BLM Field Office Wind Resource Potential



Transmission Line*
Voltage (kV)

- 69 **
- 100 - 161
- 230 - 287
- 345 - 500
- 1000

*Source: POWERmap, ©2003 Platt's, a Division of the McGraw-Hill Companies.
** Data for lines < 100 kV is not available in many areas.

The wind power estimates for this map were produced by TrueWind Solutions using the Mesomap system and historical weather data. It has been validated with available surface data by NREL and wind energy meteorological consultants.

U.S. Department of the Interior
Bureau of Land Management



U.S. Department of Energy
National Renewable Energy Laboratory



19-JUL-2004 13.1.6

City or Town

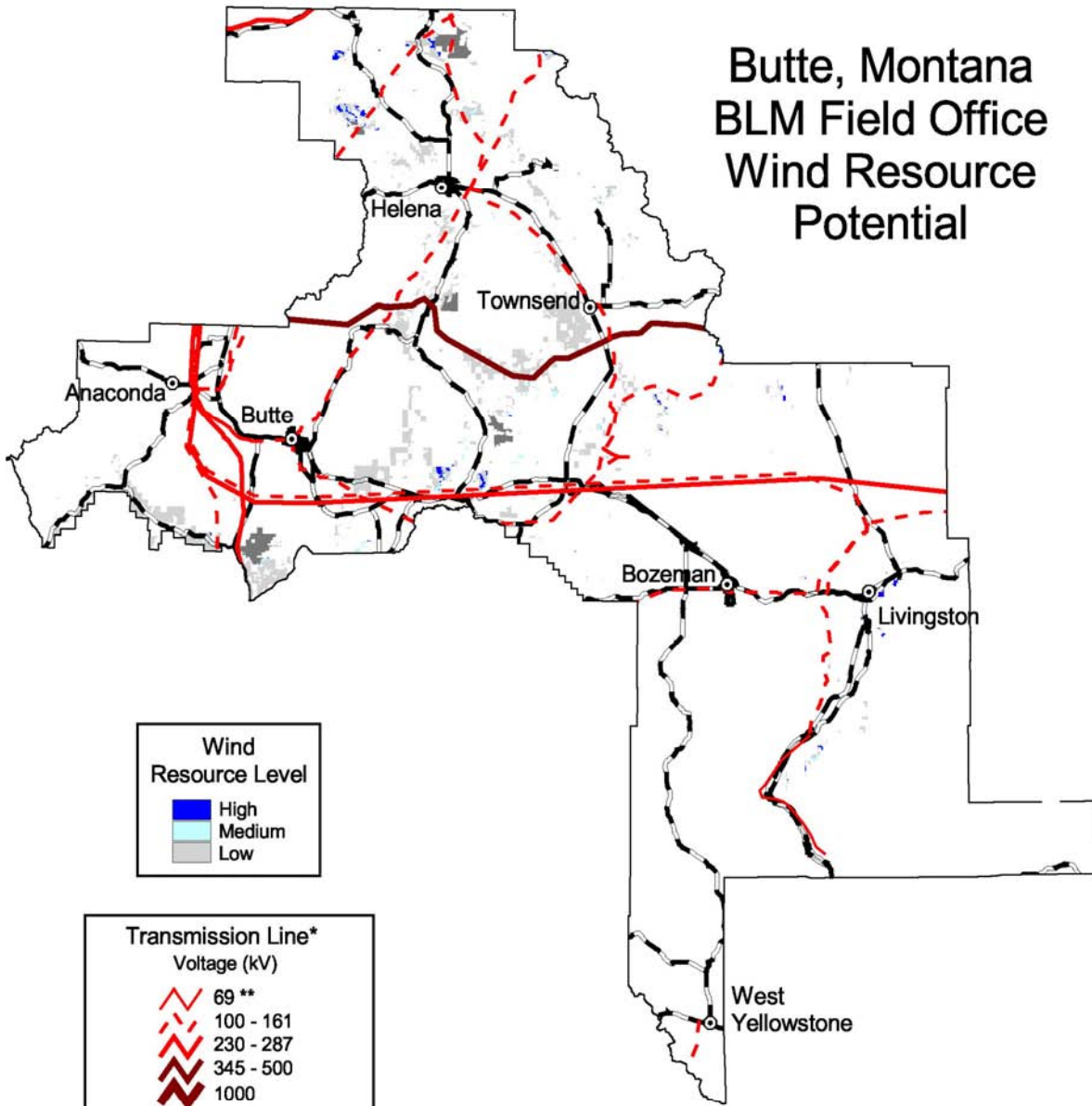
- City or Town
- Paved Road
- Non-BLM Lands
- Excluded Area (wilderness area, wilderness study area, national monument, or national conservation area)

Wind Resource Level

- High
- Medium
- Low



Butte, Montana BLM Field Office Wind Resource Potential



Wind Resource Level

- High
- Medium
- Low

Transmission Line*
Voltage (kV)

- 69 **
- 100 - 161
- 230 - 287
- 345 - 500
- 1000

*Source: POWERmap, ©2003 Platts, a Division of the McGraw-Hill Companies.
** Data for lines < 100 kV is not available in many areas.

- City or Town
- Paved Road
- Non-BLM Lands
- Excluded Area
(wilderness area, wilderness study area, national monument, or national conservation area)

The wind power estimates for this map were produced by TrueWind Solutions using the Mesomap system and historical weather data. It has been validated with available surface data by NREL and wind energy meteorological consultants.

U.S. Department of the Interior
Bureau of Land Management



U.S. Department of Energy
National Renewable Energy Laboratory



Dillon, Montana BLM Field Office Wind Resource Potential

The wind power estimates for this map were produced by TrueWind Solutions using the Mesomap system and historical weather data. It has been validated with available surface data by NREL and wind energy meteorological consultants.

Transmission Line* Voltage (kV)



*Source: POWERmap, ©2003 Platt's, a Division of the McGraw-Hill Companies.

** Data for lines < 100 kV is not available in many areas.

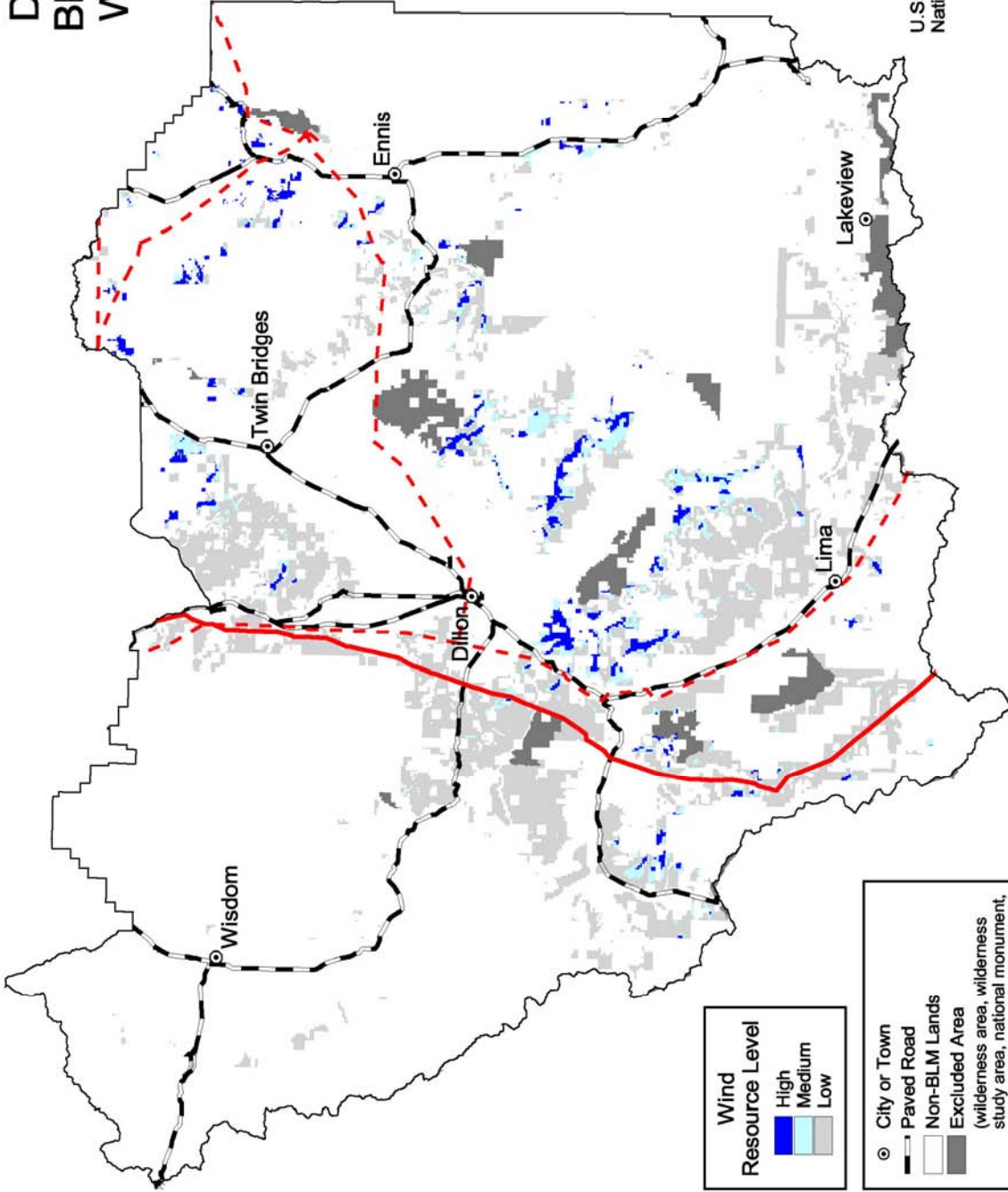
U.S. Department of the Interior
Bureau of Land Management



U.S. Department of Energy
National Renewable Energy Laboratory



19-JUL-2004 13.1.4



Wind Resource Level

- High
- Medium
- Low

- City or Town
- Paved Road
- Non-BLM Lands
- Excluded Area
(wilderness area, wilderness study area, national monument, or national conservation area)