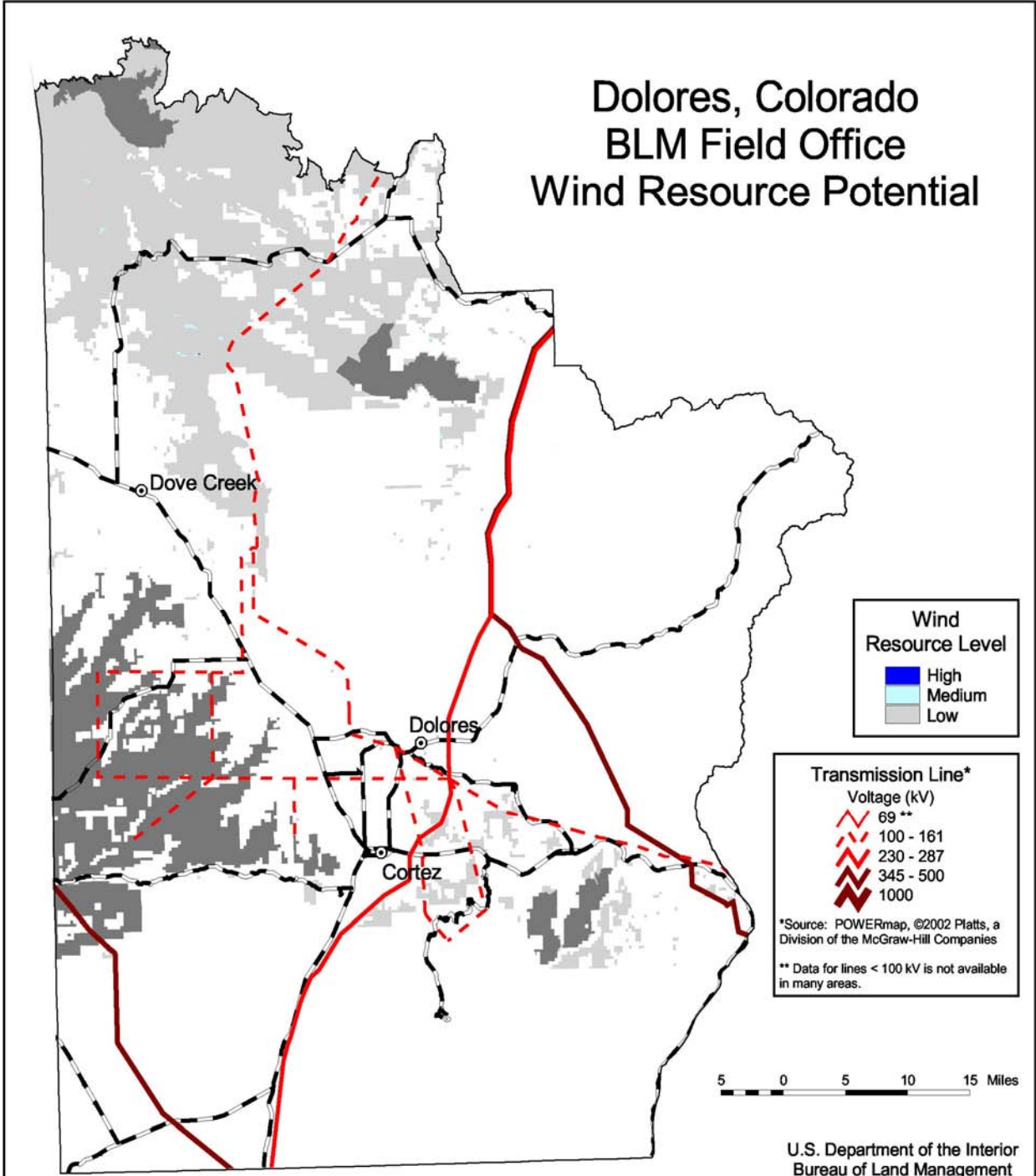


Dolores, Colorado BLM Field Office Wind Resource Potential



Wind Resource Level

- High
- Medium
- Low

Transmission Line*

Voltage (kV)

- - - 69 **
- . . . 100 - 161
- — — 230 - 287
- — — — 345 - 500
- — — — — 1000

*Source: POWERmap, ©2002 Platts, a Division of the McGraw-Hill Companies
** Data for lines < 100 kV is not available in many areas.



- City or Town
- Paved Road
- Non-BLM Lands
- Excluded Area
(wilderness area, wilderness study area, national monument, or national conservation area)

The wind power estimates for this map were produced by TrueWind Solutions using the Mesomap system and historical weather data. It has been validated with available surface data by NREL and wind energy meteorological consultants.

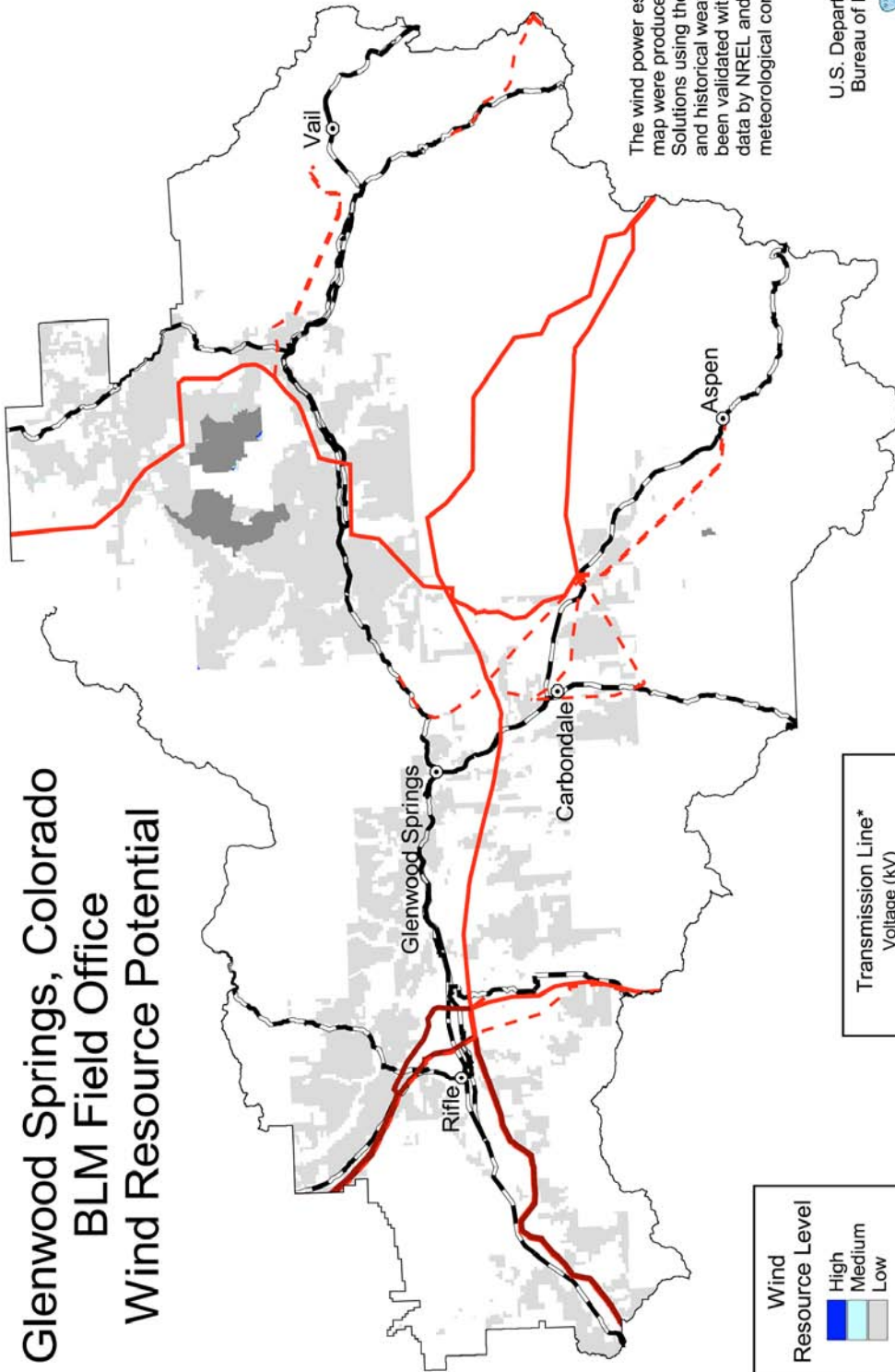
U.S. Department of the Interior
Bureau of Land Management



U.S. Department of Energy
National Renewable Energy Laboratory



Glenwood Springs, Colorado BLM Field Office Wind Resource Potential



The wind power estimates for this map were produced by TrueWind Solutions using the Mesomap system and historical weather data. It has been validated with available surface data by NREL and wind energy meteorological consultants.

Wind Resource Level

- High
- Medium
- Low

- City or Town
- Paved Road
- Non-BLM Lands
- Excluded Area (wilderness area, wilderness study area, national monument, or national conservation area)

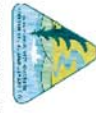
Transmission Line*

Voltage (kV)

- 69 **
- 100 - 161
- 230 - 287
- 345 - 500
- 1000

*Source: POWERmap. ©2002 Plattis, a Division of the McGraw-Hill Companies
** Data for lines < 100 kV is not available in many areas.

U.S. Department of the Interior
Bureau of Land Management



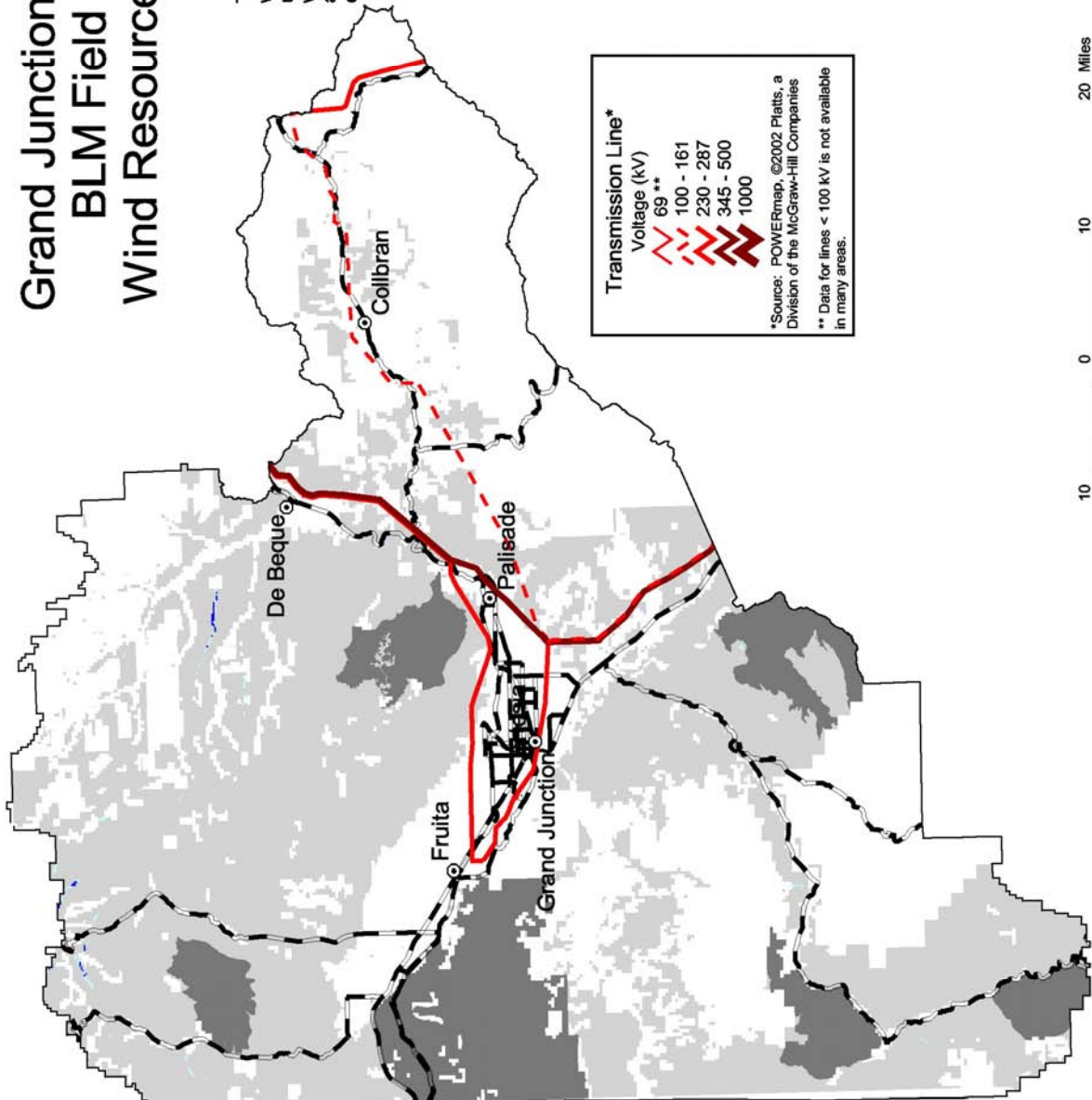
U.S. Department of Energy
National Renewable Energy Laboratory



18-JUL-2004 9.1.4

Grand Junction, Colorado BLM Field Office Wind Resource Potential

The wind power estimates for this map were produced by TrueWind Solutions using the Mesomap system and historical weather data. It has been validated with available surface data by NREL and wind energy meteorological consultants.



Wind Resource Level

High
Medium
Low

City or Town

- Paved Road
- Non-BLM Lands
- Excluded Area (wilderness area, wilderness study area, national monument, or national conservation area)

**Transmission Line*
Voltage (kV)**

- 69 **
- 100 - 161
- 230 - 287
- 345 - 500
- 1000

*Source: POWERmap, ©2002 Platts, a Division of the McGraw-Hill Companies
** Data for lines < 100 kV is not available in many areas.



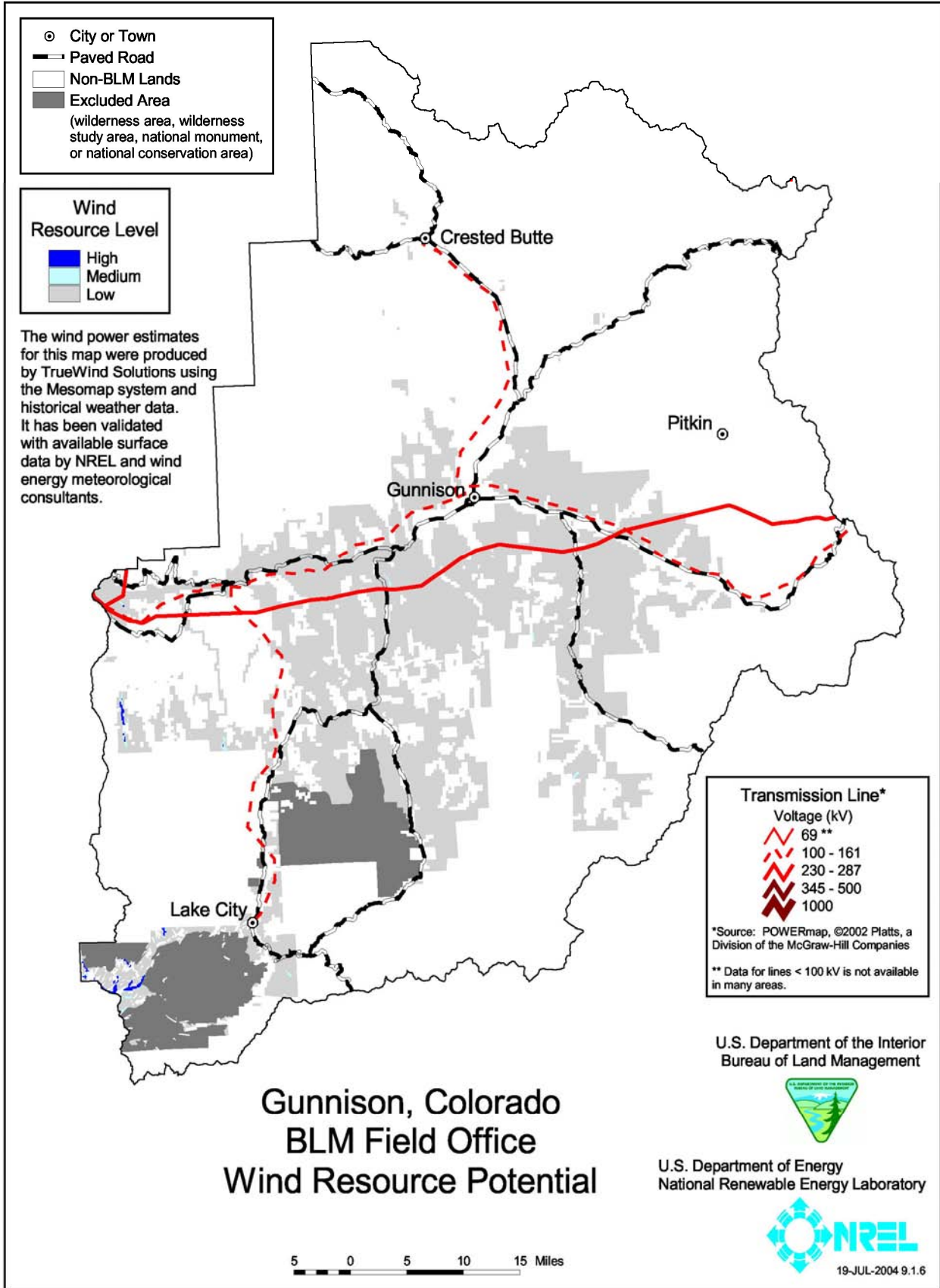
U.S. Department of the Interior
Bureau of Land Management

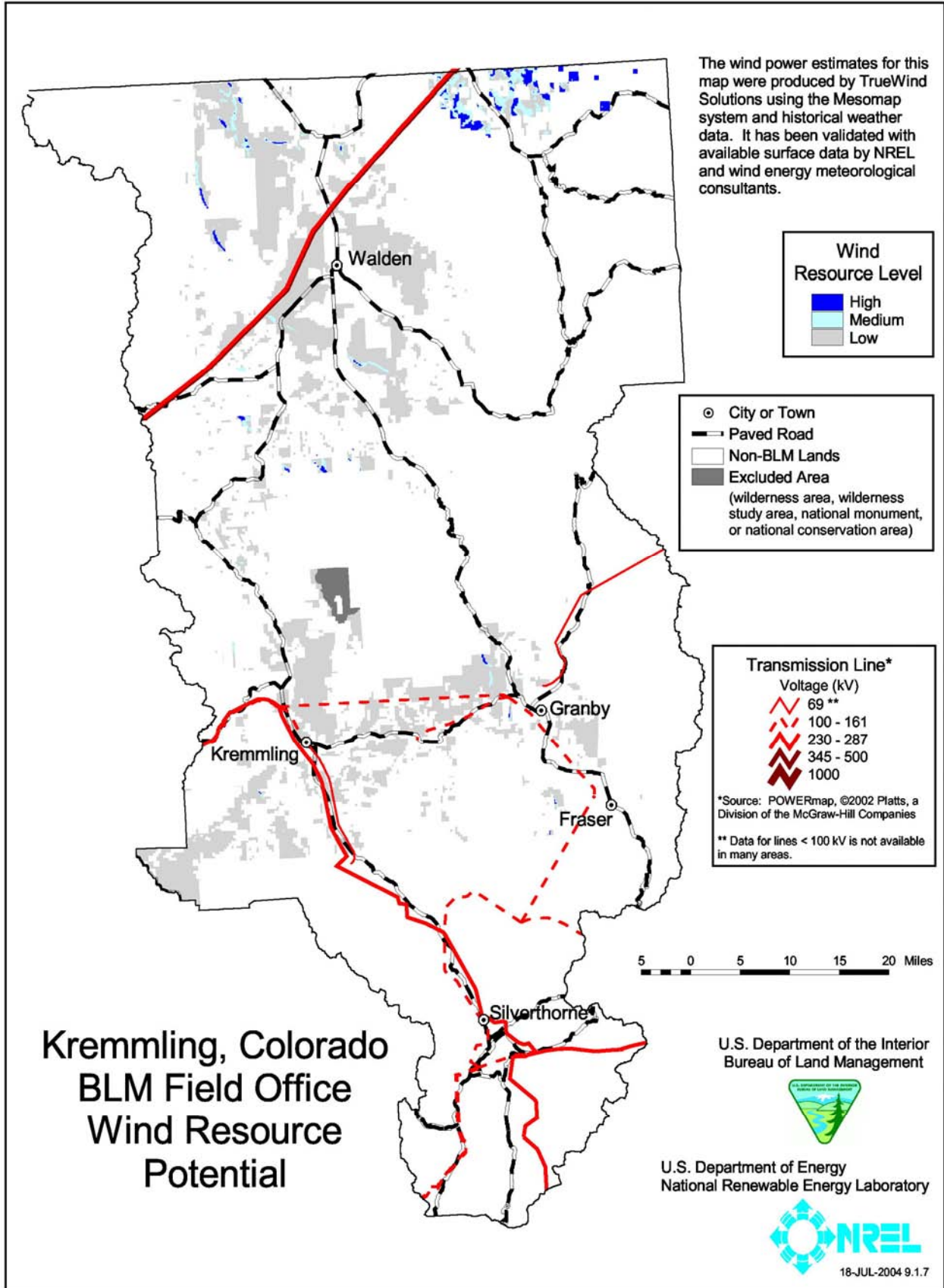


U.S. Department of Energy
National Renewable Energy Laboratory



18-JUL-2004 9.1.3





Kremmling, Colorado BLM Field Office Wind Resource Potential