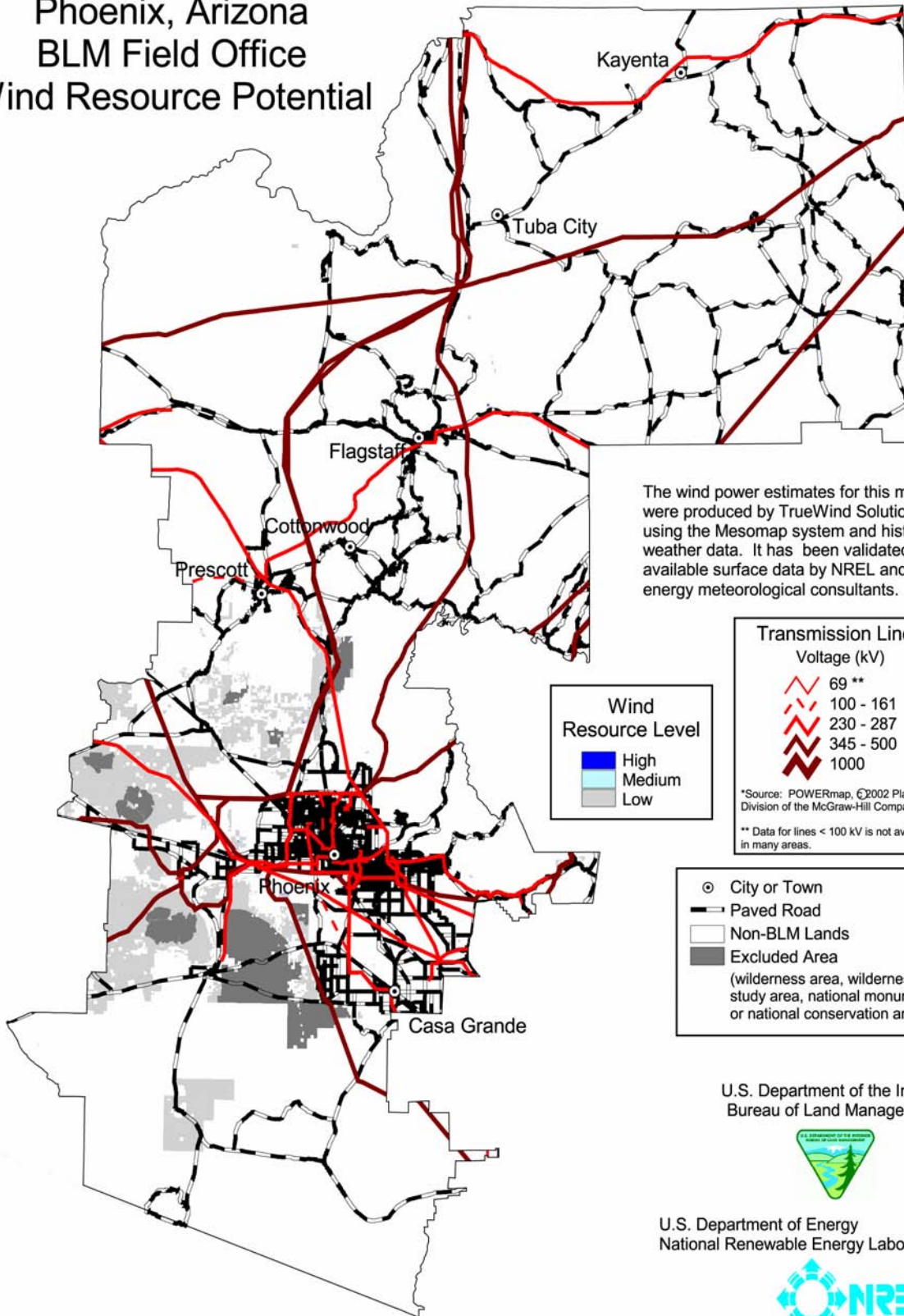


Phoenix, Arizona BLM Field Office Wind Resource Potential



The wind power estimates for this map were produced by TrueWind Solutions using the Mesomap system and historical weather data. It has been validated with available surface data by NREL and wind energy meteorological consultants.

Transmission Line*
Voltage (kV)

- 69 **
- 100 - 161
- 230 - 287
- 345 - 500
- 1000

*Source: POWERmap, ©2002 Platts, a Division of the McGraw-Hill Companies.
** Data for lines < 100 kV is not available in many areas.

Wind Resource Level

- High
- Medium
- Low

- City or Town
- Paved Road
- Non-BLM Lands
- Excluded Area
(wilderness area, wilderness study area, national monument, or national conservation area)

U.S. Department of the Interior
Bureau of Land Management

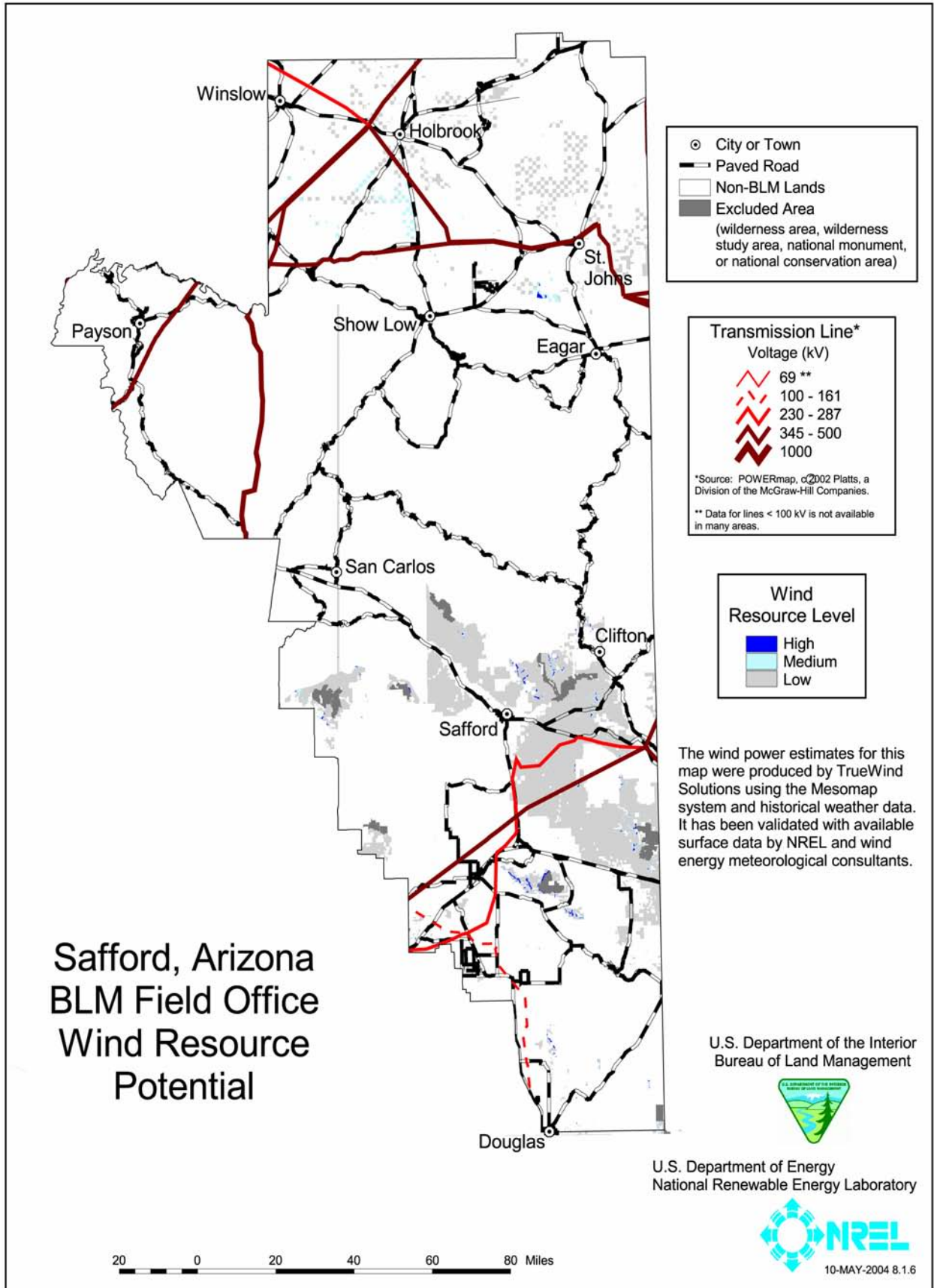


U.S. Department of Energy
National Renewable Energy Laboratory

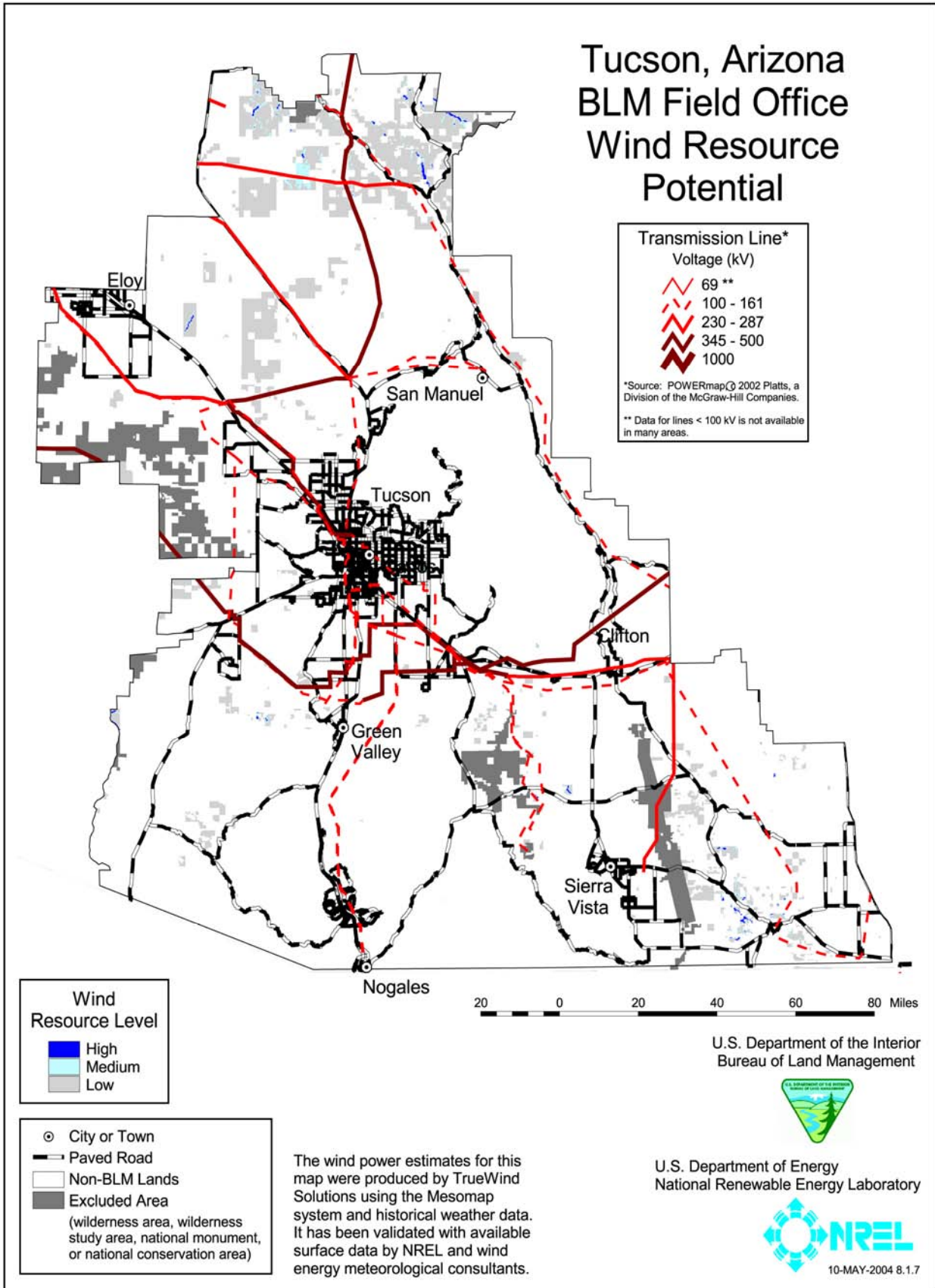


20 0 20 40 60 80 Miles

10-MAY-2004 8.1.5



Tucson, Arizona BLM Field Office Wind Resource Potential



Transmission Line*
Voltage (kV)

- 69 **
- 100 - 161
- 230 - 287
- 345 - 500
- 1000

*Source: POWERmap © 2002 Platts, a Division of the McGraw-Hill Companies.
** Data for lines < 100 kV is not available in many areas.

Wind Resource Level

- High
- Medium
- Low

- City or Town
- Paved Road
- Non-BLM Lands
- Excluded Area
(wilderness area, wilderness study area, national monument, or national conservation area)

The wind power estimates for this map were produced by TrueWind Solutions using the Mesomap system and historical weather data. It has been validated with available surface data by NREL and wind energy meteorological consultants.

U.S. Department of the Interior
Bureau of Land Management



U.S. Department of Energy
National Renewable Energy Laboratory



10-MAY-2004 8.1.7

