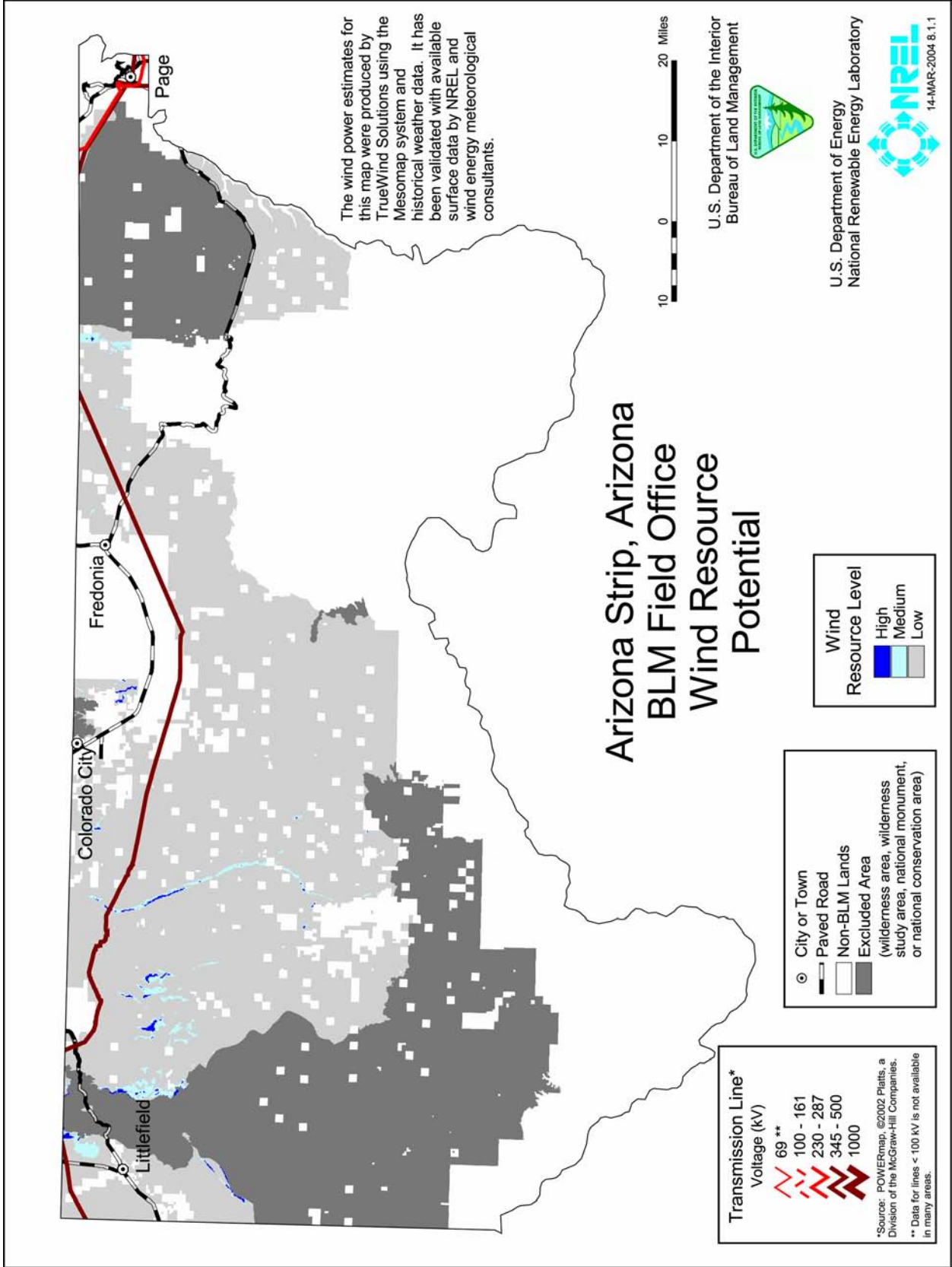
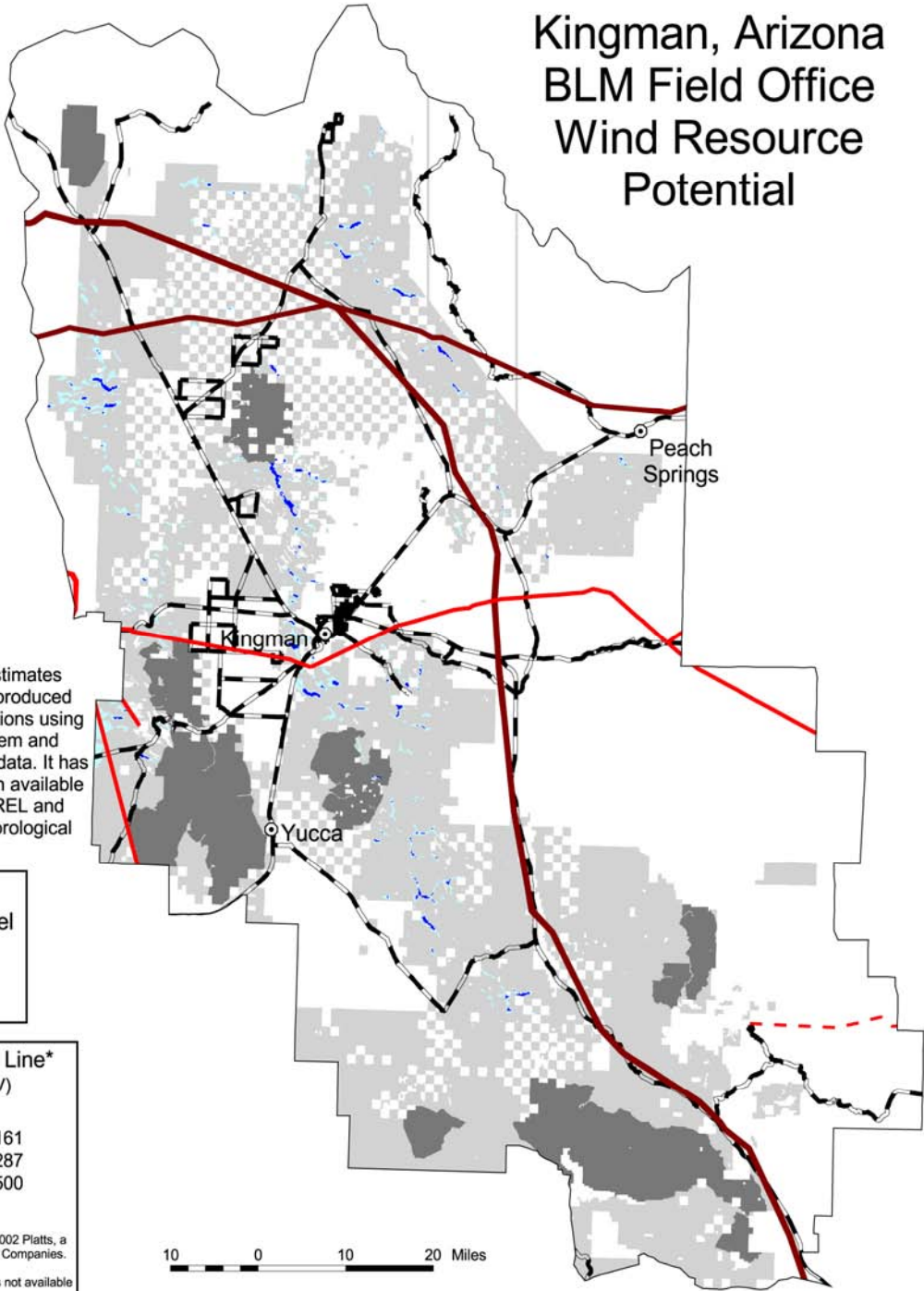
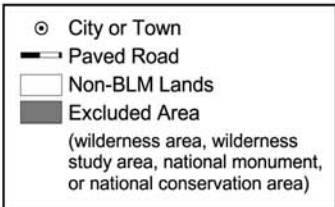
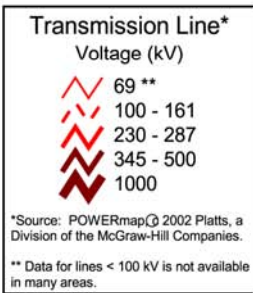
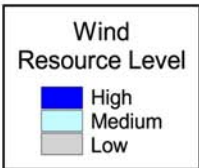


**FIGURE B-3 Index Map Showing Locations of Field Office Boundaries in Arizona**



# Kingman, Arizona BLM Field Office Wind Resource Potential

The wind power estimates for this map were produced by TrueWind Solutions using the Mesomap system and historical weather data. It has been validated with available surface data by NREL and wind energy meteorological consultants.



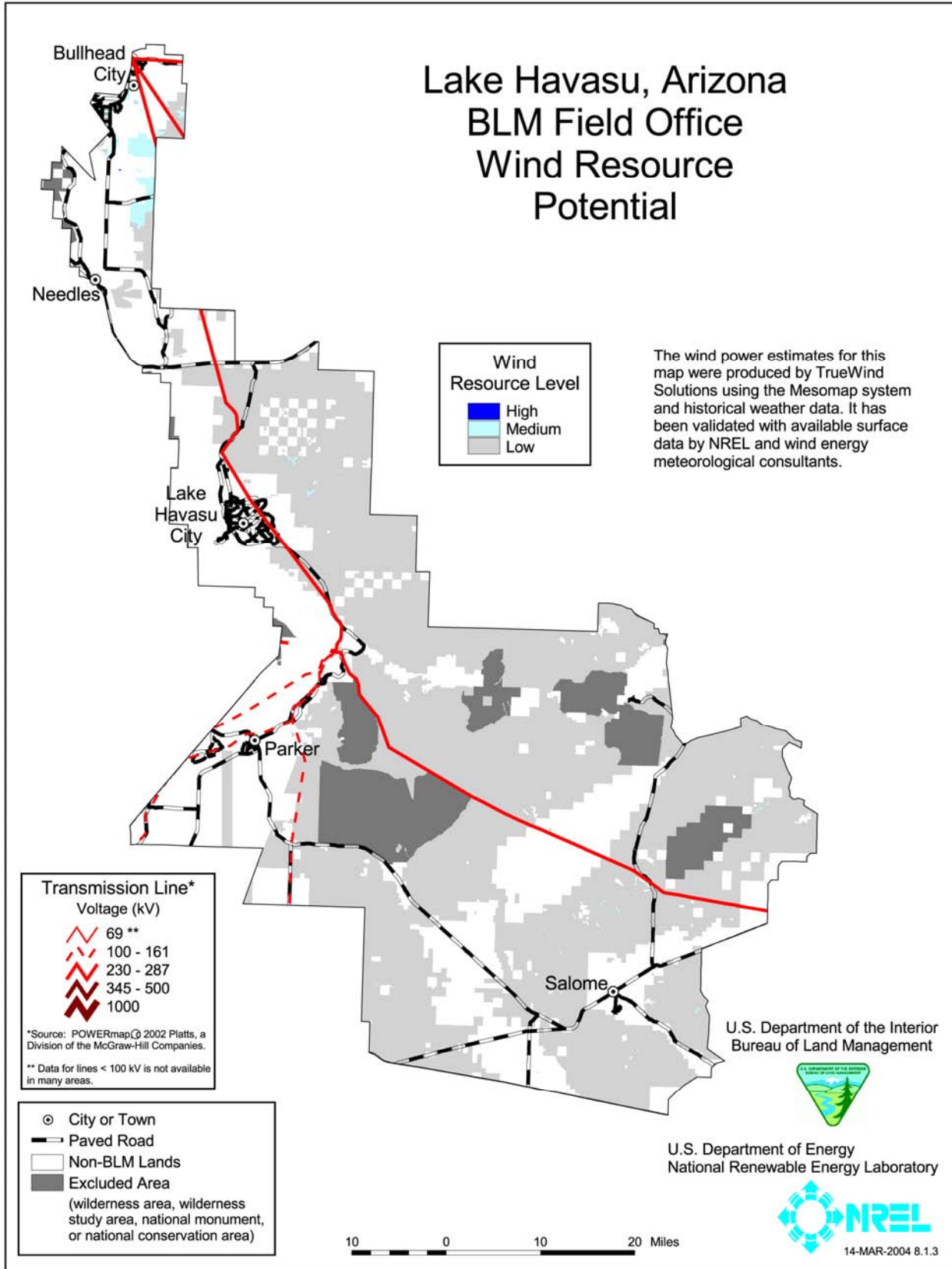
U.S. Department of the Interior  
Bureau of Land Management

U.S. Department of Energy  
National Renewable Energy Laboratory



14-MAR-2004 8.1.2

# Lake Havasu, Arizona BLM Field Office Wind Resource Potential



**Wind Resource Level**

- High
- Medium
- Low

The wind power estimates for this map were produced by TrueWind Solutions using the Mesomap system and historical weather data. It has been validated with available surface data by NREL and wind energy meteorological consultants.

**Transmission Line\***  
Voltage (kV)

- 69 \*\*
- 100 - 161
- 230 - 287
- 345 - 500
- 1000

\*Source: POWERmap© 2002 Platts, a Division of the McGraw-Hill Companies.  
\*\* Data for lines < 100 kV is not available in many areas.

- City or Town
- Paved Road
- Non-BLM Lands
- Excluded Area  
(wilderness area, wilderness study area, national monument, or national conservation area)

U.S. Department of the Interior  
Bureau of Land Management



U.S. Department of Energy  
National Renewable Energy Laboratory



10 0 10 20 Miles

14-MAR-2004 8.1.3